



Support

Enabling research by sharing knowledge

Dear Colleagues,

The Global Health Network has launched a knowledge hub to support evidence generation during the current Bundibugyo Ebola virus outbreak. This response to members requests for support and what proved useful during previous Ebola, Zika, COVID-19 and mpox outbreaks, where researchers and health workers came together to access guidance, protocols, training, and tools, while also finding collaborators and signposting to sources of funding.

Also, The Global Health Network has developed a highly accessible mechanism to support research to happen in every type of healthcare setting through its research club initiative. If you want to initiate a research culture in your organisation, whether you work in a hospital, a laboratory, or as a community health worker, register your interest to become a volunteer research club lead. More information below.

Here's all the latest news and updates from The Global Health Network.

## Events

**CEPI Call for Proposals: Bundibugyo Virus – Accelerated Development of Early-Stage Vaccine Candidates**

# WEBINAR | CEPI Call for Proposals: Bundibugyo Virus – Accelerated Development of Early-Stage Vaccine Candidates

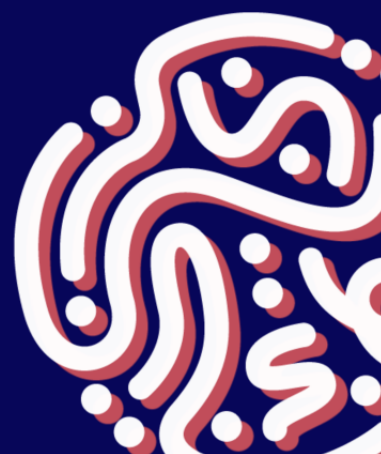


Link to register

Thursday, 4 June 2026

Time: 15:00 BST | 16:00 CET | 10:00 EST

CEPI



Date and time: 4 June 2026 | 15:00 BST

The Coalition for Epidemic Preparedness Innovations (CEPI) has launched a call for proposals to fund preclinical and/or Phase 1 proof-of-concept studies for promising Bundibugyo virus vaccine candidates. To support prospective applicants, CEPI invite you to a webinar and live Q&A session to address questions about the scope of the call, application requirements, and submission process.

The webinar will provide a short overview of the Call for Proposals, including its objectives, priority areas, and activities eligible for funding. It will also give applicants an opportunity to seek clarification and ask questions relevant to proposal preparation.

Given the urgent public health context and the short application window, interested applicants are encouraged to attend if helpful in preparing their submissions. As noted in the Call for Proposals, proposals may be submitted from 29 May 2026 to 12 June 2026.

Further Information can be found here: <https://cepi-tr.tghn.org/>

CEPI Call for Proposals: Bundibugyo Virus – Accelerated Development of Early-  
Stage Vaccine Candidates

Webinar: Mobilising AMR Resources: Introducing the Fleming Fund  
Knowledge Hub

# Mobilising AMR Resources: Introducing the Fleming Fund Knowledge Hub

**Date: 18 June 2026**

Discover the Fleming Fund Knowledge Hub and resources for AMR surveillance

**Time: 10:00 BST | 12:00 EAT | 14:30 IST | 06:00 BRT**



**Register**

Date and time: 18 June 2026 | 10:00 - 11:30 BST

The Fleming Fund, established by the UK Government in response to the 2016 AMR Review, continues to play a key role in tackling antimicrobial resistance (AMR) globally by bringing together data, expertise, and partnerships.

A major legacy of the programme is the launch of the Fleming Fund Knowledge Hub on The Global Health Network. It includes tools and resources created through Fleming Fund-supported projects, designed to strengthen AMR surveillance and laboratory capacity, particularly in low-resource and underserved settings.

Join the upcoming webinar to explore:

- The new knowledge hub and how to navigate its resources
- Case studies from partners on the development and application of tools
- Practical ways the hub can support your AMR research and programmes

[Register for the webinar: Mobilising AMR Resources: Introducing the Fleming Fund Knowledge Hub](#)

## News

### Would you like to set up a research club?

Research clubs can be set up by any healthcare profession in any setting. The idea is that every care setting has questions that, if addressed, could improve outcomes through better care, prevention or treatment practices. In some cases new evidence is needed; in others the data already exists, but has never been analysed.

Research clubs bring healthcare professionals together to discuss potential studies. The Global Health Network provides support and toolkits to help run research clubs, to enable

members to develop and advance their research ideas. The aim is to equip healthcare professionals to undertake a wide range of studies.

To show how useful, easy to establish, and impactful these clubs can be, anyone interested is invited to get in touch for support in setting up a research club within a clinic, laboratory, or hospital.

Learn more and register your interest by 19 June 2026.

### **The Global Health Network Research Club**

## **The Global Health Network has launched a knowledge hub to support evidence generation during the current Bundibugyo Ebola virus outbreak**

Building on experience from Ebola, Zika, COVID-19 and mpox, the hub responds to requests from researchers and health workers for guidance, protocols, training, tools, collaboration opportunities and funding signposting.

The principle remains the same: research should be led locally and supported globally. By connecting researchers, sharing knowledge, and providing practical support, evidence can be generated by and for affected communities.

Current priorities include understanding disease severity in Bundibugyo virus disease and generating social science evidence to strengthen community engagement and risk reduction. The hub provides access to study support, resources and training in English and French.

Previous outbreaks also saw members establish working groups focused on disease characterisation, diagnostics and behavioural research, these can be supported if useful to teams to have this convening facility to develop their plans.

### **Global Outbreaks Research: Bundibugyo (Ebola) Virus Disease**

## **Plants for Health Consortium Launches a Survey for a New Knowledge Hub**

The Plants for Health Consortium, led by the Royal Botanic Gardens, Kew, are launching a new Knowledge Hub on The Global Health Network.

Today, traditional medicine such as Ayurveda and Chinese Medicine can be found embedded in public health systems in Asia, while rural communities rely on it as their primary source of healthcare, and consumers increasingly purchase supplements and herbal remedies. At the same time more than 60% of modern pharmaceutical drugs are derived from, or inspired by, plants and fungi. However, knowledge about how plants are used is fragmented and difficult to find.

The Hub aims to provide reliable open-access information, promote safer policies, improve regulation, enhance safety awareness, and support research.

You are invited to share your experience and ideas to help shape the development of the hub.

**Share your experience: plants and fungi in human health**

## ODIN Consortium Showcase at Wastewater and Environmental Surveillance Conference in Accra, Ghana

The ODIN project team was pleased to participate in the 2026 Wastewater and Environmental Surveillance meeting, held in Accra, Ghana, from April 14 to 15. Three project representatives: Dr Evodie NGELESI, Dr Eric Lyimo, and Ms Nana Akosua Osei Bonsu shared ODIN's work in strengthening public health through wastewater and environmental surveillance in sub-Saharan Africa.

In addition, the ODIN team participated in the Wastewater Environmental Surveillance Costing Workshop, which introduced the WES Costing Tool and its role in estimating indicative costs for local laboratories and wider surveillance networks. The workshop provided useful insights into key cost drivers, laboratory and network design, and how costing evidence can support strategic planning and investment decisions.

**Read more: ODIN Showcases Wastewater and Environmental Surveillance Work at WES Conference in Accra, Ghana**

## The Global Health Network Philippines Launch Webinar Replay

On 21 April 2026, the University of Philippines Manila, through SIHI-Philippines (Program on Social Innovation and Entrepreneurship in Health, NIH), in collaboration with The Global Health Network Asia, hosted a webinar to launch [The Global Health Network Philippines](#).

The webinar highlighted how Philippine institutions are working together to strengthen interdisciplinary and translational research collaboration, how to address gaps in research methods, governance, analytics, and publication, and called on to the participants to connect with researchers globally and access tools and resources on The Global Health Network platform.

Watch the launch replay and access the presentation slides:

**The Global Health Network Philippines Launch Webinar**

Scientific publication: Artificial intelligence applied to evidence search in AI mpox pilot study

The Global Health Network published an article on *“Intelligent Search System for Research in Infectious Diseases: Optimizing Access and Discovery of Information: System Development and Pilot in MPOX”* in the Revista de Ciencia y Tecnología (RECYT) journal.

The publication presents the development and pilot implementation of an intelligent search system designed to optimise access to and retrieval of scientific information in infectious diseases, using MPOX as a case study.

The intelligent search system was developed by the digital team at The Global Health Network and highlights the collaborative and interdisciplinary work of a team composed of members from different regions, with the aim of developing solutions that strengthen research capacity across the Global South.

Read the article:

**AI-Driven system for infectious disease research: streamlining information access and discoverability: system development and pilot case in MPOX**

## Strengthen Your Community Engagement and Patient and Public Involvement and Engagement Practice

Meaningful Community Engagement and Patient and Public Involvement and Engagement (PPIE) are essential for making research more inclusive, relevant, and impactful. Whether you are new to the field or looking to deepen your expertise, there are many opportunities to learn, connect, and grow with practitioners worldwide.

Through resources, training programmes, webinars, and shared learning opportunities, you can:

- Build practical engagement and co-production skills
- Learn from real-world experiences and case studies
- Discover innovative methods and tools
- Connect with a global network of practitioners, researchers, community leaders, and advocates

A great place to start is Mesh – the Community Engagement Network, which offers learning resources, events, webinars, and opportunities to connect with others working across research settings worldwide.

Together, we can strengthen partnerships with communities, patients, and the public to ensure their voices shape research meaningfully.

**Mesh – the Community Engagement Network**

## The Global Health Network Training Centre

Access free, peer-reviewed training and resources to support your career and conduct high-quality research. The Global Health Network Training Centre offers an extensive online catalogue of resources from eLearning courses to toolkits, covering diverse global

health research topics for all roles and regions, driving impactful research worldwide.

Join professionals around the world in accessing:

- eLearning courses
- Webinars & workshops
- Regional activities
- Resources gateway

## The Global Health Network Training Centre

### Update Your Profile Country Location

The Global Health Network has introduced a new Country Location field within user profiles. To update this information, click the red notification message at the top of the screen after logging in to the platform, then select your country from the drop-down menu in the profile settings.

Adding your country location will help ensure notifications, updates, and opportunities are more relevant and targeted by region.

[Sign in](#)

**Your support keeps The Global Health Network training courses free for researchers and health workers everywhere, helping them conduct ethical and life-saving research even in times of crisis.**

**Please give what you can today to keep this vital learning open to all.**

[Donate Now](#)

[The Global Health Network](#) | [Privacy Policy](#) | [Contact](#) | [Unsubscribe](#)

The Global Health Network, Ewert House, Ewert Place, Summertown, Oxford, OX2 7DD, United Kingdom