

PATHFINDER PROJECTS

Documenting Research Processes, Lessons Learned, and Capacity Strengthening Through the Pathfinder Methodology in Latin America and the Caribbean

Period 2024 – 2026

The Global Health Network Latin America and the Caribbean (TGHN LAC)

A description of Pathfinder studies, research process mapping, implementation experiences, operational lessons learned, scientific outputs, and capacity strengthening activities developed across Latin America and the Caribbean.

June 2026

Creating Equity in Health Research by Connecting Excellence and Sharing Know-how



Country	Host Study Number, Theme selected & Title	Funding secured Host & Pathfinder	Start Date	Status June 2026
Argentina	#1. Tuberculosis Tuberculosis treatment support tools (TB-TST): clinical trial - 2019 to 2025.	#Host: NIH, USA #Pathfinder: Wellcome TGHN LAC	Feb 2024	Completed Jun 2025
Argentina	#2. CoST A quality improvement collaborative to optimise the use of antibacterials in intensive care units in Argentina.	#Host: Pfizer Foundation #Pathfinder: Wellcome TGHN LAC	Nov 2024	In progress
Brazil	#1. Dengue InfoDengue: an arbovirus alert system that uses social web, climate and epidemiological data to generate integrated analyses.	#Host – Brazil's Ministry of Health, Fiocruz #Pathfinder – Wellcome TGHN LAC	Jul 2024	Completed Dec 2025
Brazil	#2. SARS InfoGripe: epidemiological data to monitor and analyse severe acute respiratory syndromes (SARS) in Brazil, mainly influenza and COVID-19.	#Host: School of Applied Mathematics, Fundação Getulio Vargas, PROCC, Brazil's Ministry of Health. #Pathfinder: Wellcome TGHN LAC	Jul 2024	Completed Dec 2025
Brazil	#3. MineClever MineClever: a tool for mining clinical and epidemiological data from electronic health records on emerging respiratory viral diseases.	#Host – Inova Fiocruz #Pathfinder – Wellcome TGHN LAC	Jan 2025	In progress
Brazil - Peru	#4. BioBanking Culture Situational Diagnosis of Biobanking Culture in Scientific Communities in Brazil and Peru (Fiocruz, UPCH, and UCSur).	#Host – none #Pathfinder – Wellcome TGHN LAC	July 2026	In progress
Brazil	#5. Primary Health Care (EEAPS) Strategic Studies in Primary Health Care to support the development of PHC in Brazil.	#Host – Department of Primary Health Care, Brazil's Ministry of Health #Pathfinder – Wellcome TGHN LAC	May 2026	In progress
Colombia	#1. One Health One Amazon, A One Health assessment and rural health community. 2021-2024.	#Host: IDRC #Pathfinder: Wellcome TGHN LAC	Sept 2024	Completed Oct 2025
Colombia	#2. NEAS Project Host: Neuroinfecciones Emergentes en las Américas (NEAS)	#Host: NEAS #Pathfinder: Wellcome TGHN LAC	Sept 2025	Completed Feb 2026
Colombia	#3. Therapeutic Itineraries Project Host: Therapeutic itineraries of pregnant individuals diagnosed with malaria	#Host: Universidad del Valle #Pathfinder: Wellcome TGHN LAC	May 2026	In progress
Dominican Republic	#1. Tuberculosis eDOT Project: Development, Implementation and Feasibility Study of a mobile app for VOT treatment to help adherence in TB patients.	#Host: FONDOCYT, CENISMI #Pathfinder: Wellcome TGHN LAC	Aug 2024	Completed Oct 2025
Dominican Republic	#2. Community collaborator's as a method for malaria control, malaria focus La Cienaga, Dominican Republic.	#Host: UCE #Pathfinder: Wellcome TGHN LAC	Nov 2025	In progress
Honduras	#1. Zika in pregnancy Zika infection in pregnancy in Honduras (ZIPH): cohort, 2016-up to date.	# Host: Tulane University, New Orleans, Louisiana, USA #Pathfinder: Wellcome TGHN LAC	May 2024	Completed Oct 2025

Honduras	#2. Research capacity building The Global Health Network Latin America and the Caribbean (TGHN LAC) Honduras	#Host: Wellcome TGHN LAC, Hospital Escuela, Instituto Antonio Vidal #Pathfinder: Wellcome TGHN LAC	July 2025	In progress
Honduras	#3. Nurse-initiated antibiotic time out (NATO): antimicrobial stewardship in pediatric oncology.	#Host: St. Jude Children's Research Hospital, Memphis, Tennessee, USA #Pathfinder: Wellcome TGHN LAC	April 2026	In progress
Peru	#1. Cysticercosis Randomised trial of two regimens of treatment for mild parenchymal cerebral cysticercosis.	#1 Host: NIAID - NIH, USA #Pathfinder: Wellcome TGHN LAC	May 2025	In progress
Peru	#2. Cohort study to characterise the clinical evolution and factors associated with new symptomatic episodes in patients with calcified neurocysticercosis only.	#2 Host: NIAID - NIH, USA #Pathfinder: Wellcome TGHN LAC	Sept 2026	Set up

Country: Argentina

Host Title: #2 CoST

A quality improvement collaborative to optimise the use of antibacterials in intensive care units in Argentina.

Pathfinder's Title: [AMR UCIs Pathfinder](#)

General Objective: To develop a process map of the CoST host study and analyse the critical processes, tools, methods and challenges involved in implementing a quality improvement collaborative for the rational use of antibiotics in Intensive Care Units in Argentina, with a view to strengthening future implementation research in complex hospital settings.

Key Outputs & Outcomes Delivered to Date

1. A process map (flowchart) outlining and systematizing all stages of the host study — from research question development and study design selection through ethics approval, formative evaluation, data collection, intervention implementation, results interpretation and report writing.
2. A planning matrix describing the key structure underlying the CoST Pathfinder, including the guiding question, governance and ethics framework, and the methodological tools applied at each stage.
3. Documentation and systematization of the methodological toolkit applied across study stages, including the WHO IPC Assessment Framework, SRQR reporting standards, IHI Collaborative Assessment Scale, Driver Diagram, TIDieR checklist, and SQUIRE guidelines.
4. Identification and documentation of critical processes and challenges encountered during the implementation of the quality improvement collaborative across 10 ICUs, including stakeholder engagement, local adaptation of therapeutic guidelines, antibiotic time-outs, and pharmacy-led actions.

Pathfinder Lead: Javier Roberti

Pathfinder Team: Viviana Rodríguez and Ana Paula Rodríguez.

Diagram (Host)



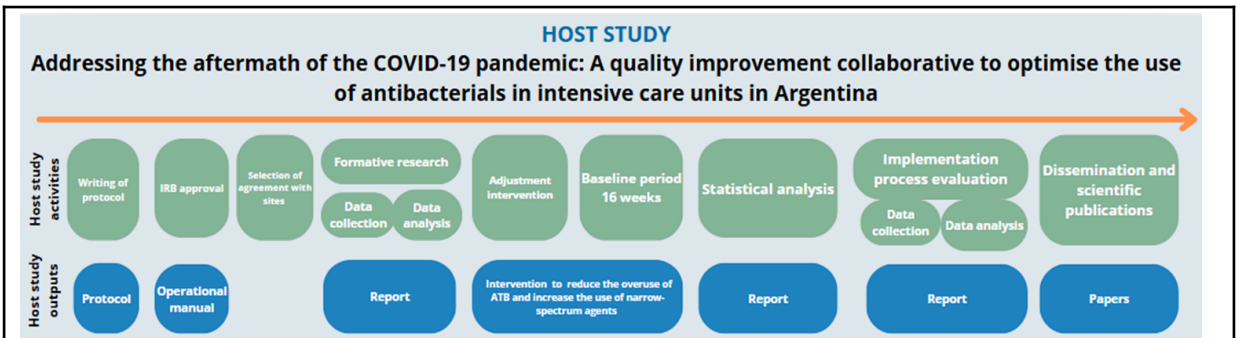


Figure 2: Diagram Host AMR UCIs

Host Title: #1 Tuberculosis treatment support tools (TB-TST): Refinement and evaluation of an interactive mobile app and direct adherence monitoring on TB treatment outcomes

Pathfinder's Title: [TB-TST Pathfinder: Process & Barrier Mapping](#)

Objectives

1. To develop a process map of the TB-TST to document the required steps and metrics.
2. To determine the tools, methods and approaches applied to each step of the host study.
3. To describe challenges encountered and how these were solved.

Key Outputs & Outcomes Delivered to Date

1. Process Map of host study
 - Ethical approval.
 - Oral presentations Union Conference on Lung Health - Nov 2024
 - Poster presented, July 2025: Oxford Global Health and Bioethics International Conference. TB-TST: Pathfinder to map ethical barriers to study initiation during the COVID-19 pandemic
 - Poster Approval, Jun 2025: 14th European Congress on Tropical Medicine and International Health. Pathfinder to map operational to TB-TST.
2. Presentation for Study Coordination and Collaboration with the Host: Comprehensive presentation outlining the pathfinder, findings, and recommendations, designed for coordination meetings and stakeholder briefings.
 - Internal work group Host-Pathfinder
 - Resources to update the burden of TB in Argentina and LAC
 - Networking to share information about the Host Study with the community
 - Paper TB-TST Pathfinder: in preparation, estimated submission to a scientific journal: August 2025
 - Papers developed by the Host with contributions from the Pathfinder team:
 - Enhancing Tuberculosis Treatment Support: A Thematic Analysis of Interactive Messages in a Digital Adherence Technology Trial to Identify Needs, Challenges, and Strategies for Improvement (PONE-D-24-51272R1)
 - Refining digital tools for tuberculosis treatment support: Lessons from an iterative, user-centered design process (JMIR ms#76742)
3. Learning activities: meetings and interactive sessions to disseminate knowledge and results, and share experiences.
 - Based on the results of the Pathfinder: shared decision-making among the Host-Pathfinder team: to design a new protocol for a secondary study on the fidelity of TB-TST implementation.

Pathfinder Lead: Javier Roberti (researcher - [Javier Roberti – IECS](#))

Pathfinder Team: Marina Guglielmino (research assistant), Romina Melgarejo (project admin), Mabel Berrueta (data manager), Florencia Botta (communicator officer), Ileana Palma (researcher host study), Daniela Moraes Morelli (researcher coordinator host study).

Diagram (Host + Pathfinder)

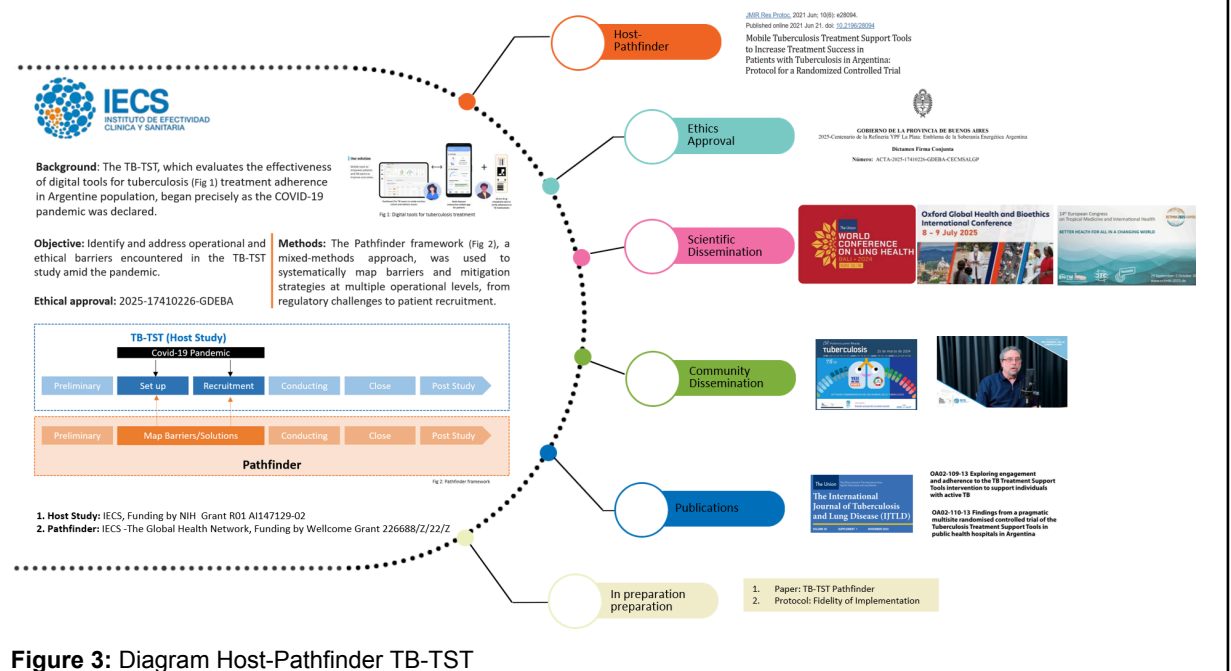


Figure 3: Diagram Host-Pathfinder TB-TST

Country: Brazil

Host Title: #5 Primary Health Care (EEAPS)

[Strategic Studies in Primary Health Care to support the development of PHC in Brazil](#)

Selected: Mar 2026 - Pathfinder information will be provided in the next report.

Pathfinder Lead: Larissa Pruner Marques

Pathfinder Team: Henrique Dias, Mirna Teixeira, Max Gasparini, Fabiana Soares, Clara Gouveia, Shanykka Rojas, Laís Araujo, Letícia Marinho and Flávia Bueno

Diagram (Host):

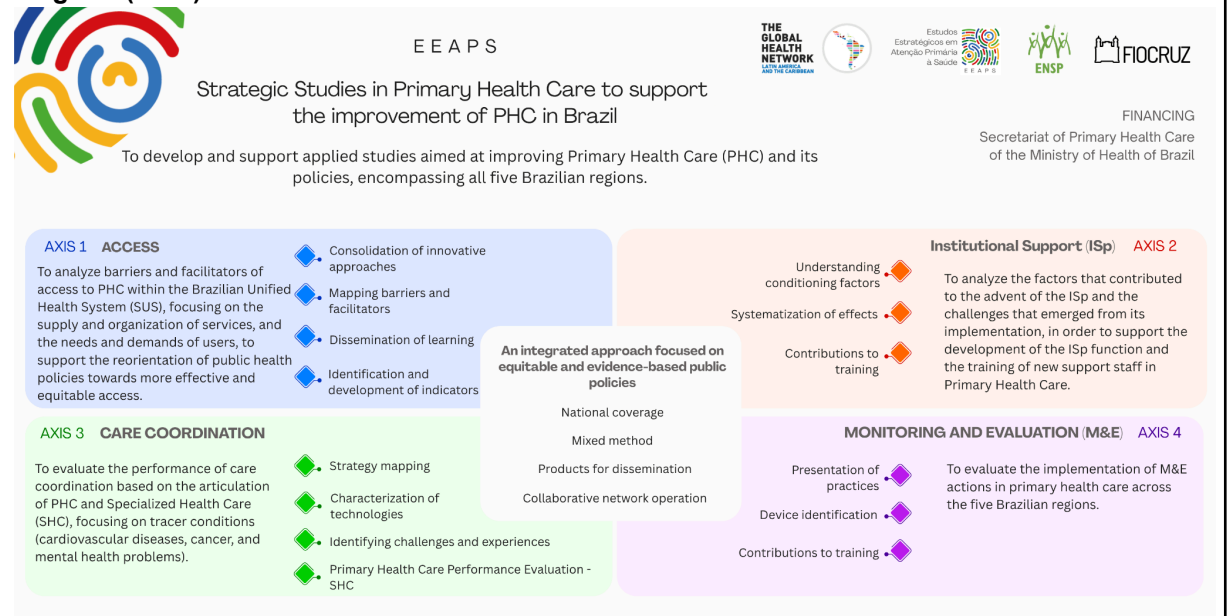


Figure 4: Diagram Host Study EEAPS

Host Title: #4 BioBanking Culture

Situational Diagnosis of Biobanking Culture in Scientific Communities in Brazil and Peru (Fiocruz, UPCH, and UCSur)

Pathfinder's Title: [Pathfinder Biobanking Culture: from data structuring to acceleration of evidence generation in collaborative research between Brazil and Peru](#)

General Objective: To prospectively map the research process to improve research design and conduction across the participating centres, accelerating the translation of data into evidence to strengthen biobanking culture in the institutions.

Selected: Sep 2025 - Pathfinder information will be provided in the next report.

Diagram (Host):



Figure 5: Diagram Host Study Biobanking Culture

Host Title: #3 MineClever: Clinical and Epidemiological Information Miner for Emerging Respiratory Viral Diseases

Pathfinder's Title: [Pathfinder MineClever: process mapping and prospects for implementation of a clinical and epidemiological data mining tool](#)

General objective: To map and analyse the development process of the “MineClever: Clinical and Epidemiological Information Miner for Emerging Respiratory Viruses” tool, as well as to investigate ways of improving its methodological framework, usability and applicability for healthcare professionals, and to explore prospects for its implementation within the Unified Health System (SUS).

Key Outputs & Outcomes Delivered to Date

1. Mind map (flowchart) outlining and systematizing the study stages.
2. Planning matrix describing the key structure underlying the Pathfinder MineClever.
3. Supported Learning Sessions focused on developing the MineClever Pathfinder from concept to practice, fostering conceptual understanding and the initial application of the methodology within the host study through a structured collaborative learning process (Jan–Feb 2026)

Pathfinder Lead: Larissa Pruner Marques

Pathfinder Team: Cristiane Bresani, Selma dos Santos, Laís Araujo, Letícia Marinho and Flávia Bueno

Diagram (Host + Pathfinder):

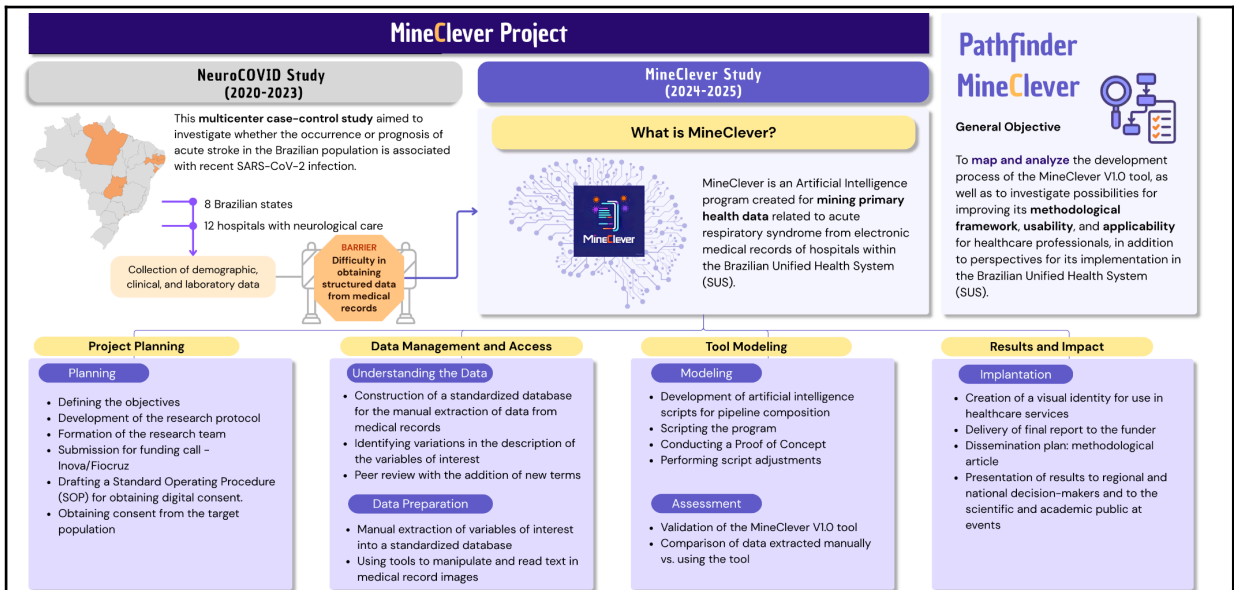


Figure 6: Diagram Host-Pathfinder MineClever

Host Title: #2 InfoGripe

Pathfinder's Title: [Mapping InfoGripe: investigating new solutions to generate useful information for management and knowledge advances on severe acute respiratory syndromes control](#)

General Objective: To track the steps and processes of the 'host' study InfoGripe to determine the challenges and successes encountered in its interactions with health managers and the media, in addition to fostering dialogue with potential international partners.

Key Outputs & Outcomes Delivered to Date

1. Mind map (flow) outlining and systematizing the study's stages.
2. Planning matrix describing the key structure underlying the Pathfinder InfoGripe.
3. Pathfinder InfoGripe Protocol, which defines the goals and objectives, methodology, data analysis strategies, expected deliverables, communication and dissemination plan of findings, and the project timeline.
4. Tracker tool, compiling preliminary data from interviews and document analyses on the host study's Outputs and Impact, and Stakeholder engagement.
5. Stakeholders' registry detailing all parties involved in the host study.
6. Interactive open-access dashboard providing a quick visualisation and self-updating tool for the main weekly results produced by InfoGripe (SARS surveillance in Brazil).
7. Glossary (trilingual) to explore key concepts related to InfoGripe, supporting knowledge translation and the planning of health actions.
8. InfoGripe Research Club to bring together professionals and students interested in epidemiological surveillance, data science and public health of SARS in Brazil.
9. Brief report (trilingual) summarising the main findings with the pathfinder methodology, including key tools, methods, and systems, operational challenges and practical recommendations for comparable studies.
10. Case-study abstract presenting the pathfinder mapping findings at the XVIII Latin American Congress of Social Medicine and Collective Health (August 2025, Rio de Janeiro, Brazil).

Pathfinder Lead: Larissa Pruner Marques

Pathfinder Team: Leonardo Bastos, Marcelo Gomes, Daniel Câmara, Laís Araujo, Leticia Marinho and Flávia Bueno

Diagram (Host + Pathfinder)

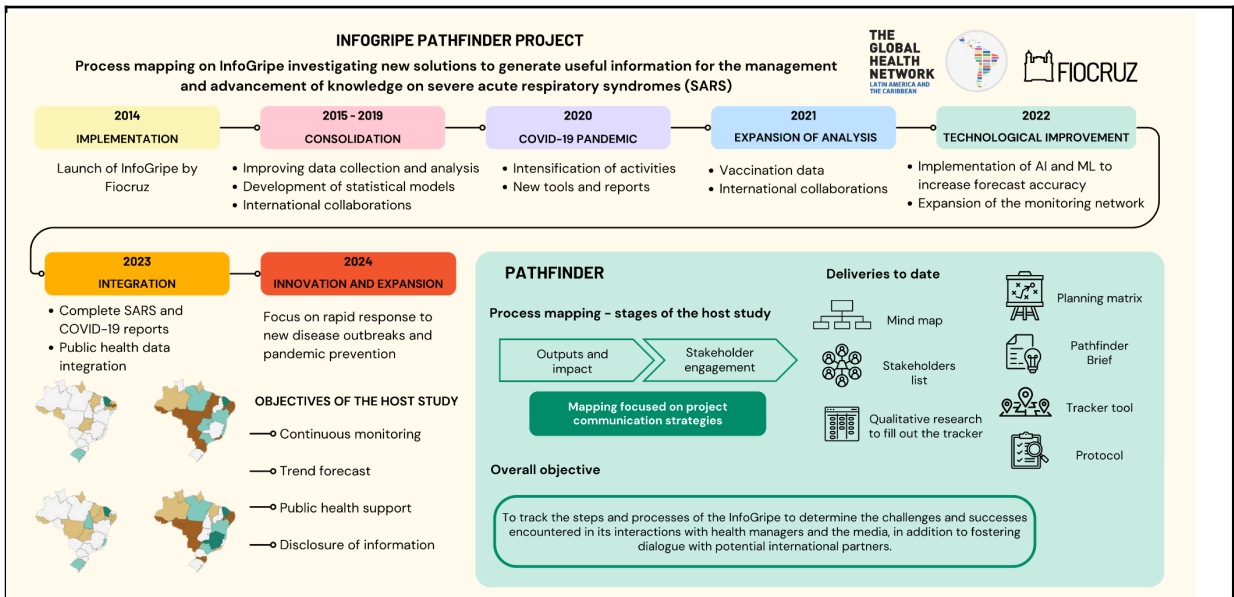


Figure 7: Diagram Host-Pathfinder InfoGripe

Host Title: #1 InfoDengue

Pathfinder's Title: [Mapping InfoDengue: investigating new solutions to generate useful information for management and knowledge advances on arbovirus control](#)

General Objective: To track the steps and processes of the InfoDengue to determine the challenges and successes encountered in generating health research evidence.

Key Outputs & Outcomes Delivered to Date

1. Mind map (flow) outlining and systematizing the study's stages.
2. Planning matrix describing the key structure underlying the Pathfinder InfoDengue.
3. Pathfinder InfoDengue Protocol, which defines the goals and objectives, methodology, data analysis strategies, expected deliverables, communication and dissemination plan of findings, and the project timeline.
4. Tracker tool, compiling data on the host study's Data Management and access, Outputs and Impact, and Stakeholder engagement.
5. Stakeholders' registry detailing all parties involved in the host study.
6. Glossary (trilingual) presenting key concepts related to InfoDengue, supporting knowledge translation and the planning of health actions.
7. InfoDengue Research Club, to bring together professionals and students interested in epidemiological surveillance, data science and public health of arboviruses in Brazil.
8. Brief report (trilingual) summarising the main findings with the pathfinder methodology, including key tools, methods, and systems, operational challenges and practical recommendations for comparable studies.
9. Three webinars (trilingual) on preparing for the 2025 and 2026 dengue seasons, engaging more than 2,000 health professionals and policy-making.
10. Case-study abstract presenting the pathfinder mapping findings at the XVIII Latin American Congress of Social Medicine and Collective Health (August 2025, Rio de Janeiro, Brazil).
11. Fourth edition of the E-vigilância Congress, Data Science in Epidemiological Surveillance: what is it for and who is it for?, held in November 2025 (Rio de Janeiro, Brazil), contributing to discussions on innovation in health surveillance technologies.
12. Testimonial video documenting the InfoDengue team experience with the pathfinder methodology.

Pathfinder Lead: Larissa Pruner Marques



Pathfinder Team: Cláudia Codeço, Sara Oliveira, Laís Araujo, Letícia Marinho and Flávia Bueno
Diagram (Host + Pathfinder)

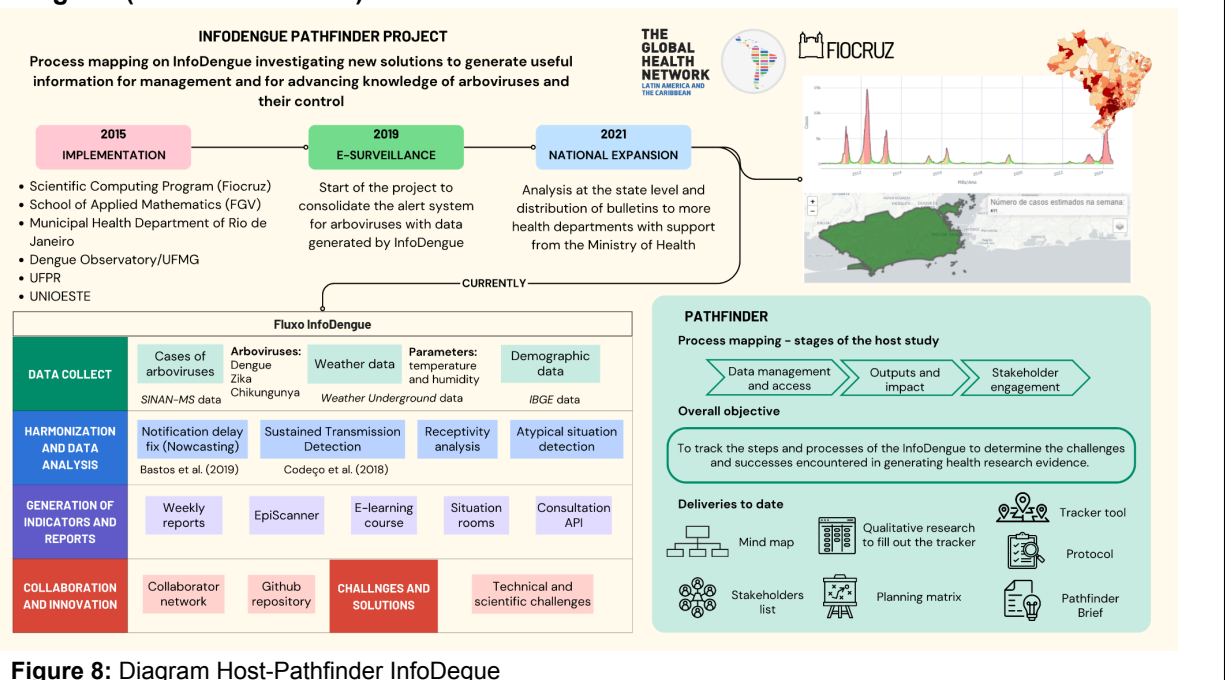


Figure 8: Diagram Host-Pathfinder InfoDegue

Country: Colombia

Host Title: #3 Therapeutic itineraries of pregnant individuals diagnosed with malaria in Cali, 2022–2024

Pathfinder Title: [Processes, challenges and lessons learned in the study of therapeutic itineraries for pregnant people with malaria: a Pathfinder study](#)

Objectives:

General Objective

To characterize the processes, challenges, and lessons learned from the host project regarding the study of therapeutic itineraries of pregnant individuals with malaria.

Specific Objectives

- To characterize the planning, data collection, and data analysis processes used in the host project for the reconstruction of therapeutic itineraries.
- To identify the challenges encountered during the host project.
- To identify the lessons learned from the host project.

Key Outputs & Outcomes Delivered to Date

- Building the proposal for the ethics committee

Pathfinder Lead: Juan Pablo Botache Rojas

Pathfinder Team: Juan Pablo Botache Rojas, Luisa Fernanda Rivera Forero

Diagram (Host + Pathfinder)

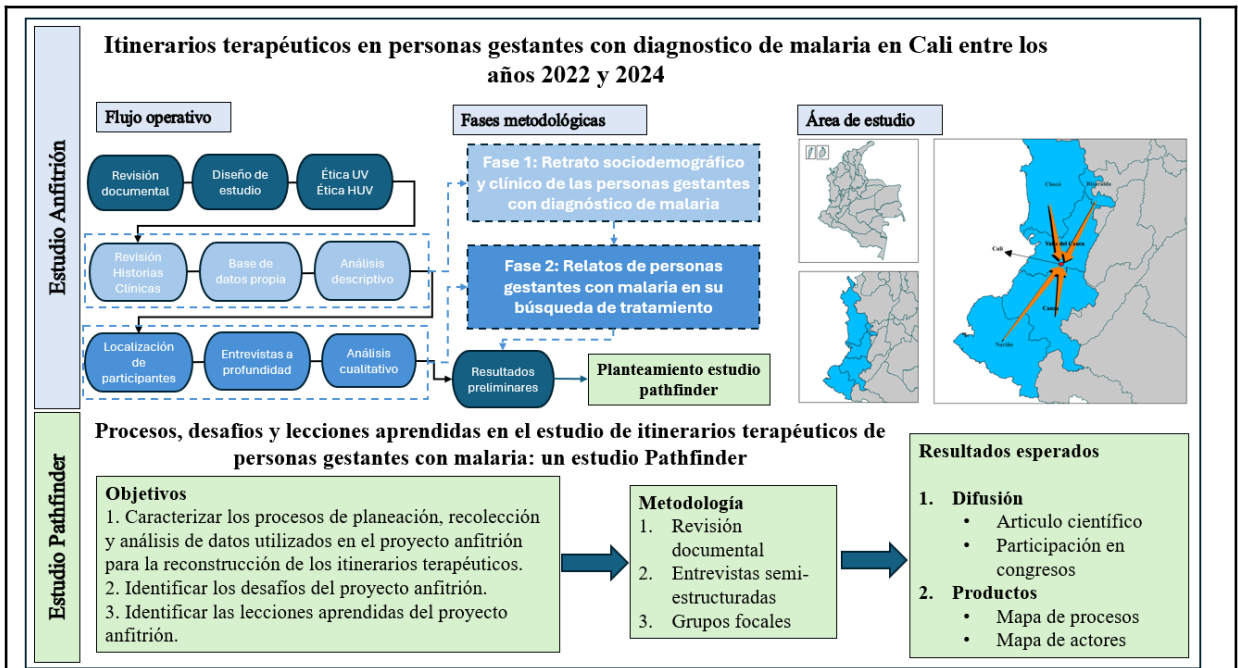


Figure 9: Diagram Host-Pathfinder Itinerarios

Host Title: #2 NEAS: Neuroinfecciones Emergentes en las Américas (NEAS):

Pathfinder Title: [Process mapping to determine the challenges and lessons learned in the recruitment, sampling and follow-up of a multicenter study on emerging neuroinfections and neuroinflammatory diseases in Colombia.](#)

Objectives:

General: To characterize the data collection, sample collection and storage, and clinical follow-up strategies developed in the NEAS project to identify challenges and lessons learned.

Specifics:

- I. Generate a process map that documents the necessary steps in patient inclusion, clinical data collection, sampling, and follow-up.
- II. Determine the tools, methods, instruments, and systems used in each step.
- III. Identify stakeholders in the NEAS project and generate a map of interest and influence.
- IV. Describe the challenges encountered and how they were solved.
- V. Identify the main outputs of the NEAS study.

Key Outputs & Outcomes Delivered to Date

To establish a process map that allows the NEAS project to be taken as an archetype of multicenter study of great impact to generate replicability in research groups in Latin America and the Caribbean, through:

1. Key metrics on process performance.
2. Tools for data management and logistics.
3. Replicable methods and approaches.
4. Practical solutions.

Pathfinder lead: Abraham Andrade

Pathfinder Team: Eliana González, Pablo Dorado, Lyda Osorio, Beatriz Parra, Carlos Pardo

Diagram (Host + Pathfinder)

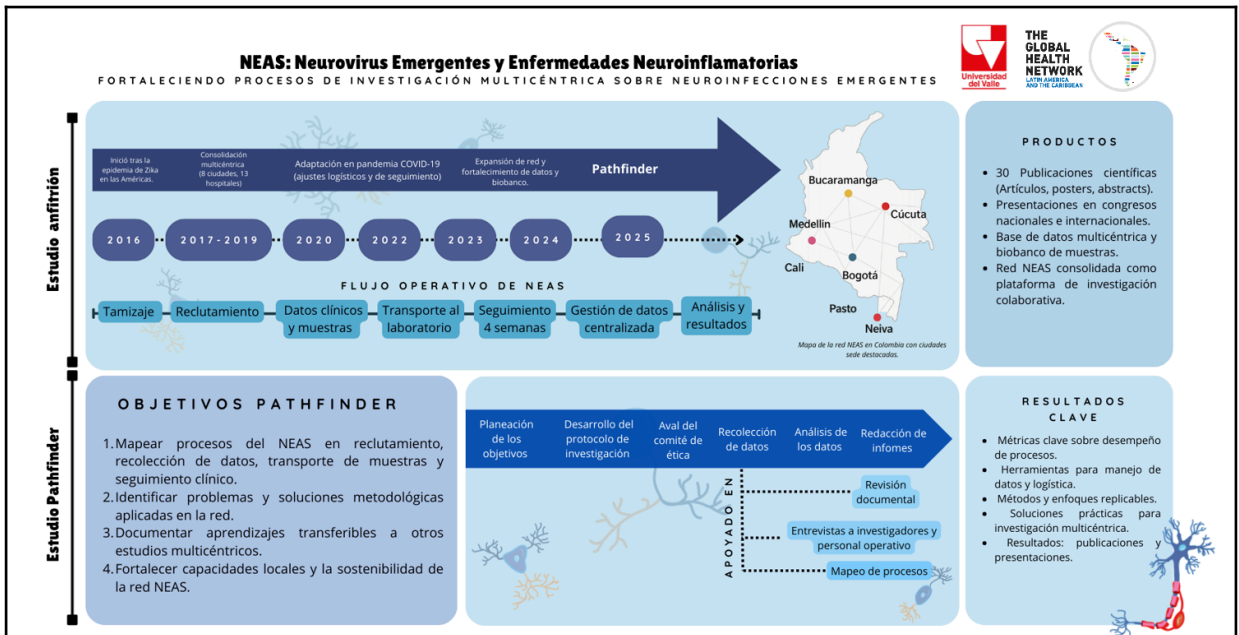


Figure 10: Diagram Host-Pathfinder NEAS

Link: <https://lac.tghn.org/proyectos-pathfinder/pathfinder-colombia/neas-pathfinder-colombia/#resultados>

Host Title: #1 One amazon - Caquetá Node: A One Health assessment of emerging epidemic threats and resilience among Amazonian indigenous peoples, in the light of responses to the COVID-19 pandemic

Pathfinder's Title: [Strengthening community participation in rural and community health in the Colombian Andean-Amazonian foothills.](#)

Objectives

1. To identify community engagement strategies successfully developed in the host project
2. To identify methods and tools used in the collection and analysis of key information on project results.
3. To characterize the strategies developed to strengthen the social appropriation of knowledge and political influence.

Key Outputs & Outcomes Delivered to Date

Publication: Botache Rojas JP, Monje Olaya J, Pasaje Bolaños M and Mendéz F. Pedagogies of Participation and Epistemic Justice: Applying the Pathfinder Methodology in the Colombian Amazonian Piedmont [version 1; peer review: awaiting peer review]. Wellcome Open Res 2026, 11:277 (<https://doi.org/10.12688/wellcomeopenres.26268.1>)

Pathfinder Lead: Juan Pablo Botache Rojas

Pathfinder Team: Fabián Méndez, Marta Jaramillo, Michael Pasaje Bolaños, Juanita Monje Olaya

Diagram (Host + Pathfinder)



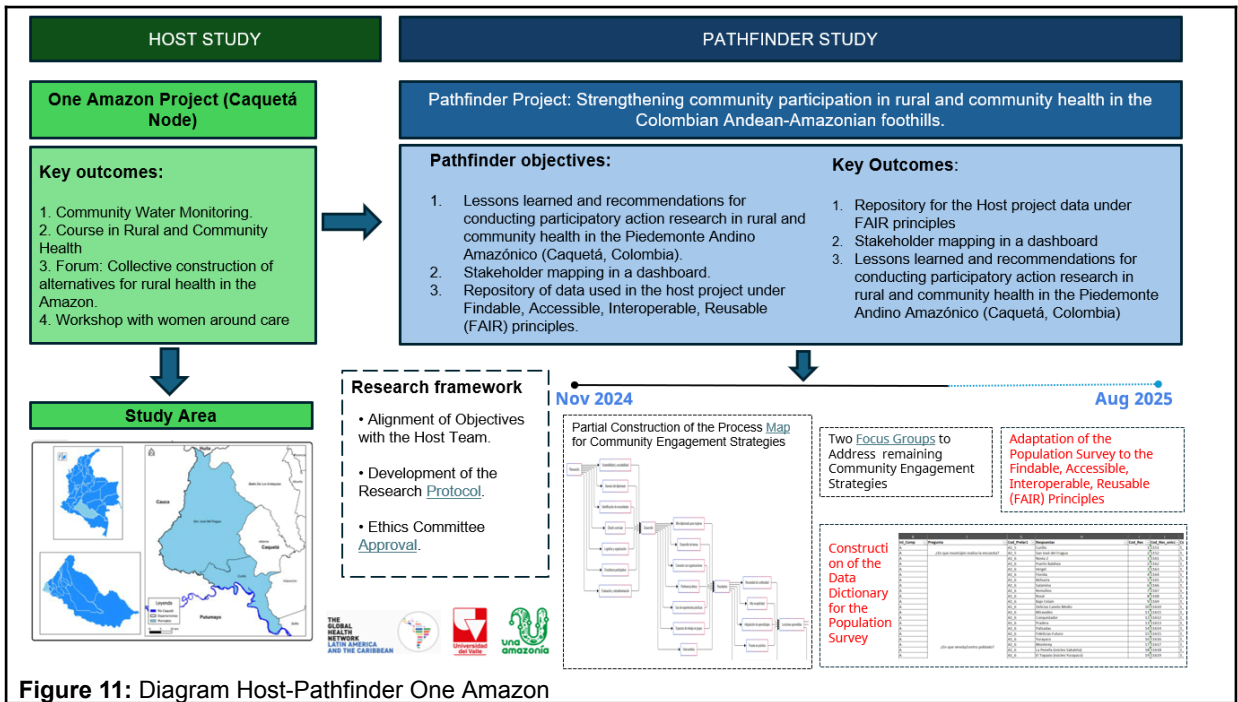


Figure 11: Diagram Host-Pathfinder One Amazon

Country: Dominican Republic

Host Title: #2 Colaboradores comunitarios como método de control de la malaria, foco de malaria la Ciénega, República Dominicana.

Pathfinder's Title: [Community Participation for Malaria Control in the Dominican Republic: A Pathfinder Study.](#)

Objective(s)

1. Document the process of the host study in a structured manner.
2. Disseminate the gaps, facilitators and learned lessons identified in the host study.
3. Generate recommendations that facilitate conducting similar studies in other communities in the Dominican Republic.

Key Outputs & Outcomes Delivered to Date

1. Document the process in the Pathfinder Tracker and a Process Map.
2. A report of the recommendations
3. A published article about the experience.
4. Presentation of the results to both local and regional stakeholders.
5. Planning and implementation of a second study in a different community, based on the lessons learned through the Pathfinder.

Pathfinder Lead: Alin Gil

Pathfinder Team: Luis Felipe Arias, Maritza Martínez Rodríguez

Diagram (Host + Pathfinder):

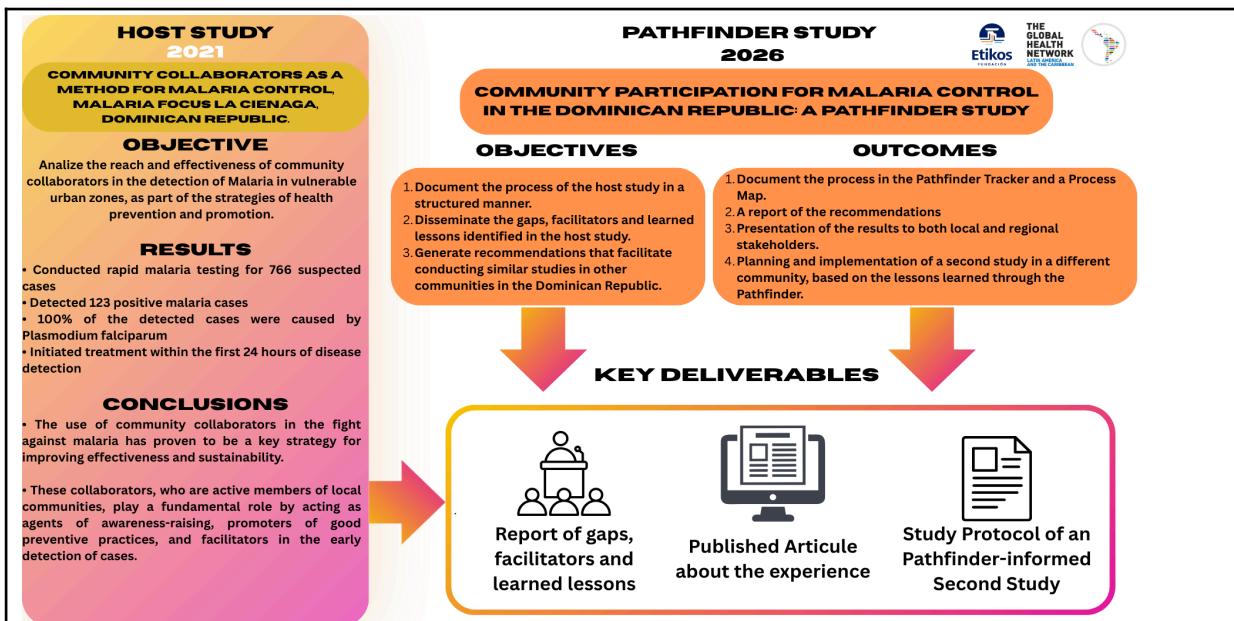


Figure 12: Diagram Host-Pathfinder Malaria

Host Title: #1 Design, development, implementation, and feasibility study of a mobile application for Video Observed Treatment to promote adherence to treatment in Tuberculosis: eDOT Study (2019-2024)

Pathfinder's Title: [Systematization of experiences and process mapping of the design, development and implementation of a digital tool to promote adherence to treatment in Tuberculosis in the context of Dominican Republic](#)

Objectives

1. To systematise the experience in both phases of the study (usability and implementation).
2. To identify challenges faced at each stage and their solutions.
3. To analyse the experience of the research team and relevant stakeholders, focused on three main points: Governance, Development of a digital tool for improving public health and Community Engagement.

Key Outputs & Outcomes Delivered to Date

1. A process map of the eDOT study.
2. A set of organised lessons and recommendations for future similar projects in LAC, specifically related to governance and digital health app development.
3. An illustrated presentation of good practices of community engagement and involvement in the eDOT project.

Pathfinder Lead: Luis Felipe Arias

Pathfinder Team: Magdiel Castillo, Julio Canario

Diagram (Host + Pathfinder)

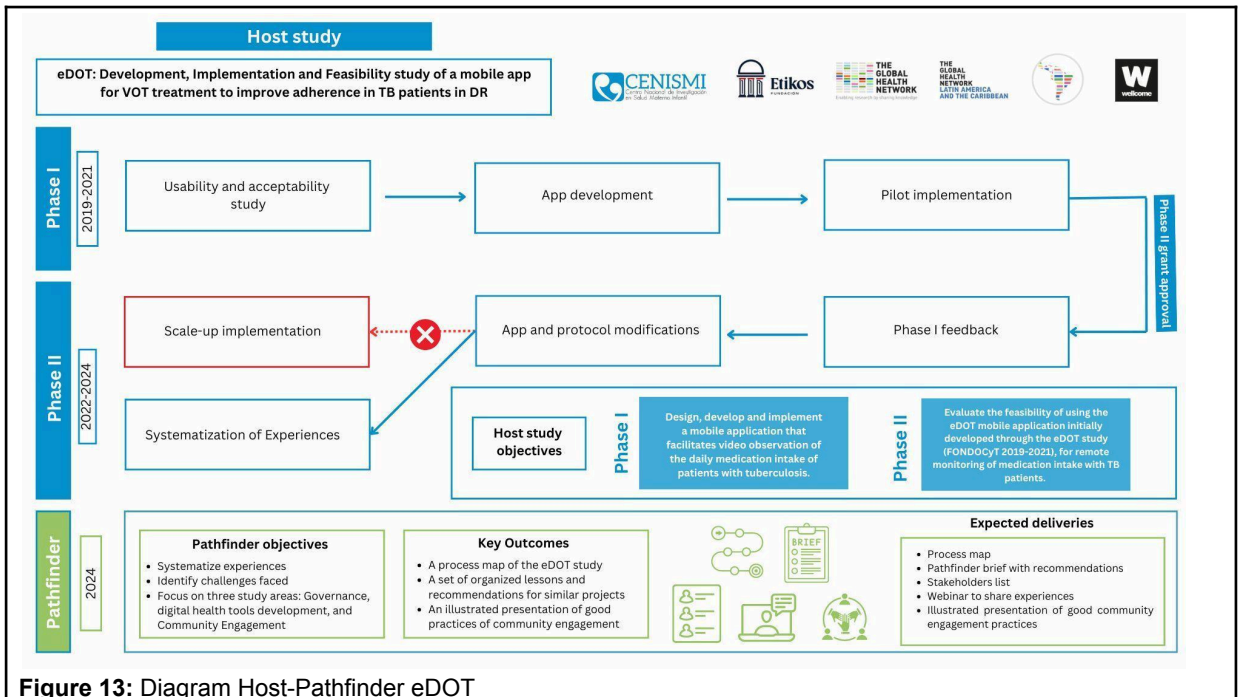


Figure 13: Diagram Host-Pathfinder eDOT

Country: Honduras

Host Title: #3 Nurse-initiated antibiotic time out (NATO): antimicrobial stewardship in pediatric oncology.

Pathfinder's Title: [Nurse-initiated antibiotic timeout \(NATO\) in pediatric hemato-oncology patients: a Pathfinder study for implementation process mapping](#)

Objective(s):

1. To identify the processes related to the implementation of the NATO strategy in the pediatric oncology ward of Hospital Escuela, Tegucigalpa, Honduras.
2. To describe the key stakeholders involved and their roles in the implementation of the NATO strategy.
3. To identify the barriers, facilitators, and institutional dynamics involved in the implementation of the NATO strategy.
4. To analyse the interaction between the processes, stakeholders, and institutional dynamics related to the implementation of the NATO strategy.

Key Outputs & Outcomes Delivered to Date

1. Development of a preliminary process map describing the implementation stages of the NATO strategy in the pediatric hemato-oncology ward.
2. Identification and characterization of key stakeholders involved in the implementation process, including their roles, responsibilities, and coordination mechanisms.
3. Documentation of the main barriers, facilitators, and institutional dynamics influencing the implementation of the NATO strategy in the clinical setting.
4. Analysis of the interaction between operational processes, stakeholders, and institutional factors to identify opportunities for improving implementation and sustainability of the NATO strategy.

Pathfinder Lead: Xiomara Medina

Pathfinder Team: Aida E. Ponce, Clarissa Aguilar, Katia López, Marco Luque.

Diagram (Host + Pathfinder):

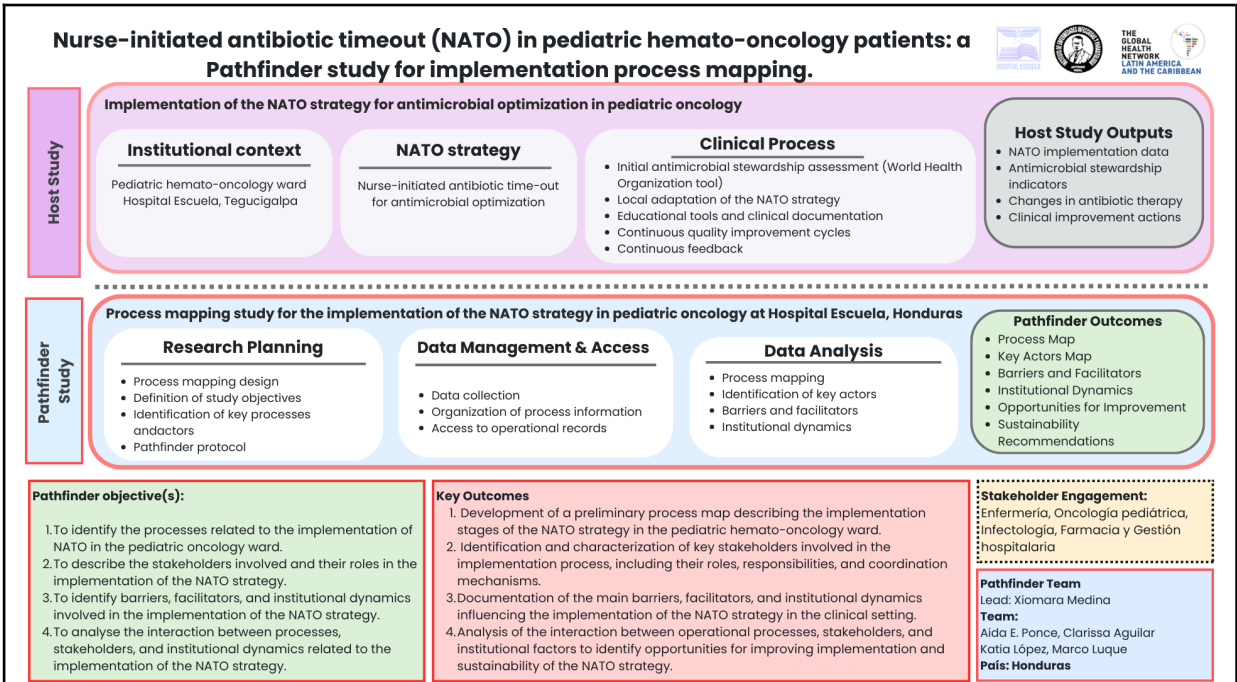


Figure 14: Diagram Host - NATO-Pathfinder

Host Title: #2 The Global Health Network Latin America and the Caribbean (TGHN LAC) Honduras
Pathfinder's Title: [COREMap-Hn: process mapping of a knowledge and practice community to strengthen infectious disease research in Honduras](#)

Objectives

- To develop a process map for the implementation of The Global Health Network Latin America and the Caribbean (TGHN LAC) in Honduras.
- To identify the operational components used in each phase of the implementation of TGHN LAC in Honduras.
- To describe the barriers and solutions that enabled the achievement of TGHN LAC objectives and its continuity.
- To correlate the identified operational components with the barriers and solutions described during the implementation of TGHN LAC in Honduras.

Key Outputs & Outcomes Delivered to Date

- Development of a preliminary process map documenting the main phases of the implementation of the TGHN project in Honduras, including milestones, responsible actors, and timelines.
- Identification of operational components used in each phase of the process, such as coordination mechanisms, institutional engagement strategies, and planning tools.
- Analysis of the barriers encountered and the solutions implemented, documenting how these enabled progress in project execution and ensured its continuity.
- Assessment of the relationship between operational components, barriers, and solutions, in order to understand their contribution to overcoming challenges during implementation.

Pathfinder Lead: Katia López.

Pathfinder Team: Clarissa Aguilar, Xiomara Medina, José Andino, Cinthya Mejía, Alison Ortez, Daniela Moraes Morelli, Mercedes Rumi, Jackeline Alger.

Diagram (Host + Pathfinder)



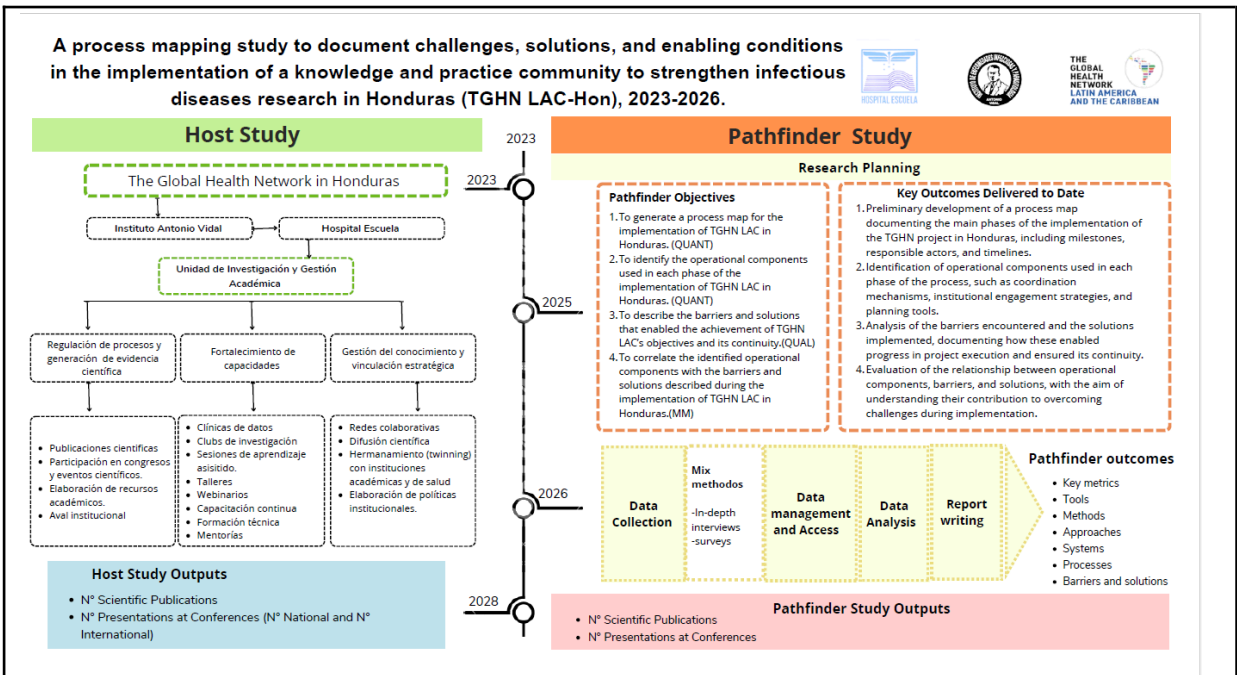


Figure 15: Diagram Host - Pathfinder COREMap-Hn

Host Title: #1 Zika in Pregnancy in Honduras (ZIPH) Cohort Study

Pathfinder's Title: [ZIPH-Track: a pathfinder study of a cohort of Zika in pregnancy in Honduras](#)

Objectives

- To generate a process map for the ZIPH study.
- To identify the operational components used at each stage of the ZIPH study.
- To describe the barriers and solutions that enable the achievement of the ZIPH study objectives and its transition to ZIPH2 study.
- To correlate the identified operational components with the described barriers and solutions.

Key Outputs & Outcomes Delivered to Date

- Identification of key metrics for each component step of the ZIPH study including time and resources.
- Detailed description of the operational components including tools, methods, approaches, and systems employed, highlighting their application and effectiveness at each phase of the ZIPH study.
- Comprehensive analysis of the barriers encountered, and the solutions implemented, detailing how these contributed to achieving the ZIPH study (Zika) objectives and facilitated its transition to the ZIPH2 study (Chagas disease, arboviruses, other infections of pandemic importance).
- Integrated assessment of the relationship between the identified operational components and the barriers and solutions to understand their contribution in overcoming challenges and achieving the objectives of the ZIPH study.

Pathfinder Lead: Katia López.

Pathfinder Team: Clarissa Aguilar, Xiomara Medina, Jorge A. García, Alison Ortez, Mónica Medina, ML Cafferata, Pierre Buekens, Jackeline Alger.

Publication: López-Mejía K, García-Aguilar J, Ortez A *et al.* Mapping implementation challenges and solutions in a pregnancy cohort study on emerging infections in Honduras: A pathfinder study [version 1; peer review: awaiting peer review]. Wellcome Open Res 2026, 11:47 (<https://doi.org/10.12688/wellcomeopenres.25388.1>)

Diagram (Host + Pathfinder)

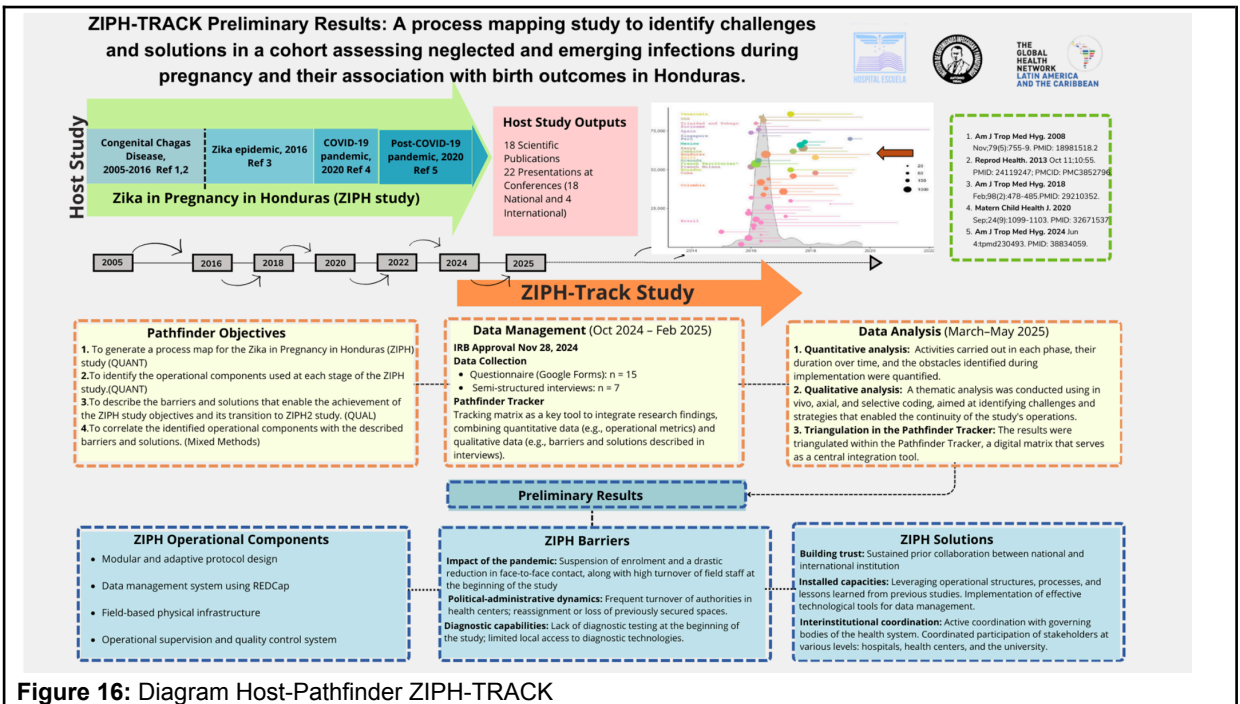


Figure 16: Diagram Host-Pathfinder ZIPH-TRACK

Country: Peru

Host Title: #2 Cohort study to characterise the clinical evolution and factors associated with new symptomatic episodes in patients with calcific neurocysticercosis only. Lima, Peru, 2011–2027. NCCal Study.

Pathfinder's Title: [Lessons learned from the follow-up phase of a long-term cohort study on calcified neurocysticercosis: a retrospective Pathfinder study on patient retention strategies. Pathfinder - 2](#)

Objectives:

- To map the follow-up processes of the NCC calcified cohort study, documenting the key stages, tools, and strategies used to maintain patient contact and retention over 15 years.
- To identify barriers to patient retention and the solutions developed by the research team during the follow-up phase.
- To characterize the lessons learned from the follow-up phase that can inform the design of long-term cohort studies in similar low-resource settings.

Key Outputs & Outcomes Delivered to Date

- A process map detailing the key stages and operational components of the follow-up phase of the host cohort study.
- A comprehensive description of barriers to patient retention and the solutions implemented, including strategies that emerged from the research team's experience.
- A set of practical lessons and recommendations to optimize follow-up and retention in long-term cohort studies in LAC.

Pathfinder Lead: Tania De La Cruz, Javier Bustos

Pathfinder Team: Sandra Albino, Gianfranco Arroyo, Hector H. Garcia

Diagram (Pathfinder + Host)

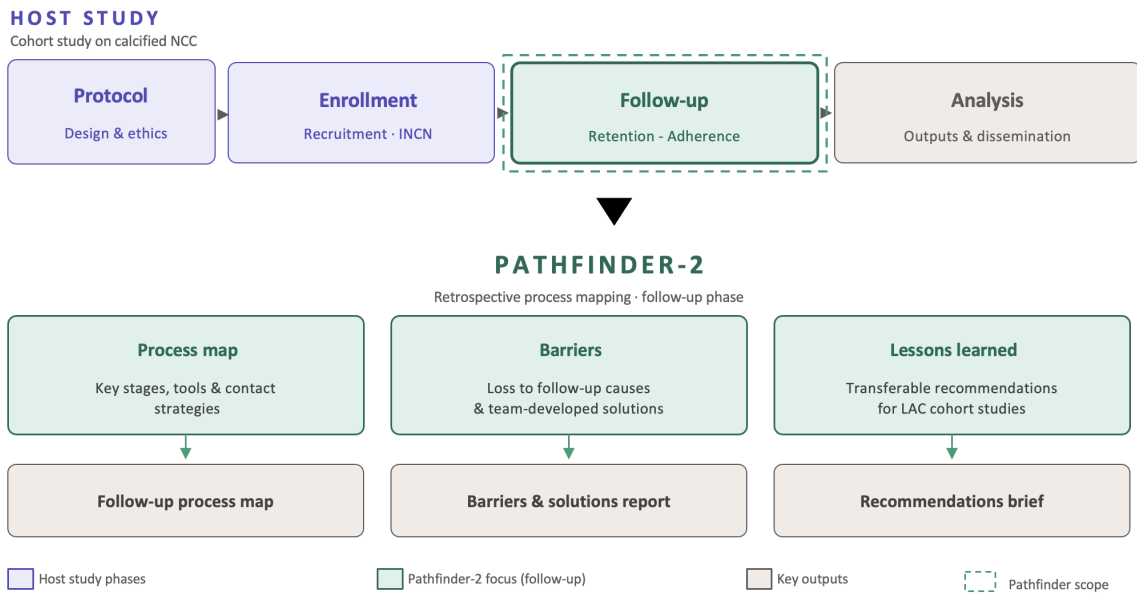


Figure 17: Diagram Host-Pathfinder NCCal: process mapping of the follow-up phase of a long-term cohort study on calcific neurocysticercosis, Lima, Peru

Host Title: #1 Multicentre randomised controlled trial of single-dose and triple-dose regimens of oxfendazole for mild (one or two lesions) cerebral parenchymal cysticercosis

Pathfinder's Title: [Process mapping of the recruitment to enrollment phases of a multicenter trial for the treatment of mild parenchymal cerebral cysticercosis: Pathfinder-1 study.](#)

Objectives

1. To map processes from the early implementation phases through enrollment.
2. To identify barriers, bottlenecks, and facilitators across different stages.
3. To propose recommendations and solutions to optimize future similar clinical trials.

Key Outputs & Outcomes Delivered to Date

1. **Process Map of Planning Phase**
A process map detailing key stages in the process of planning.
2. **Early identification of Barriers, Bottlenecks, and Facilitators**
Comprehensive identification of most frequent barriers, bottlenecks and facilitators in the planning phase.
3. **Lessons Learned and Recommendations**
Development of a set of practical lessons and recommendations to optimise similar processes in clinical trials, available through the TGHN LAC hub and open-access repositories.
4. **Policy and Dissemination Outputs**
A policy brief that synthesizes lessons learned and recommendations for similar studies available in hub or/and free access repository.

Pathfinder Lead: Tania De La Cruz

Pathfinder Team: Sandra Albino, Javier Bustos, Hector H. Garcia

Diagram (Pathfinder + Host)

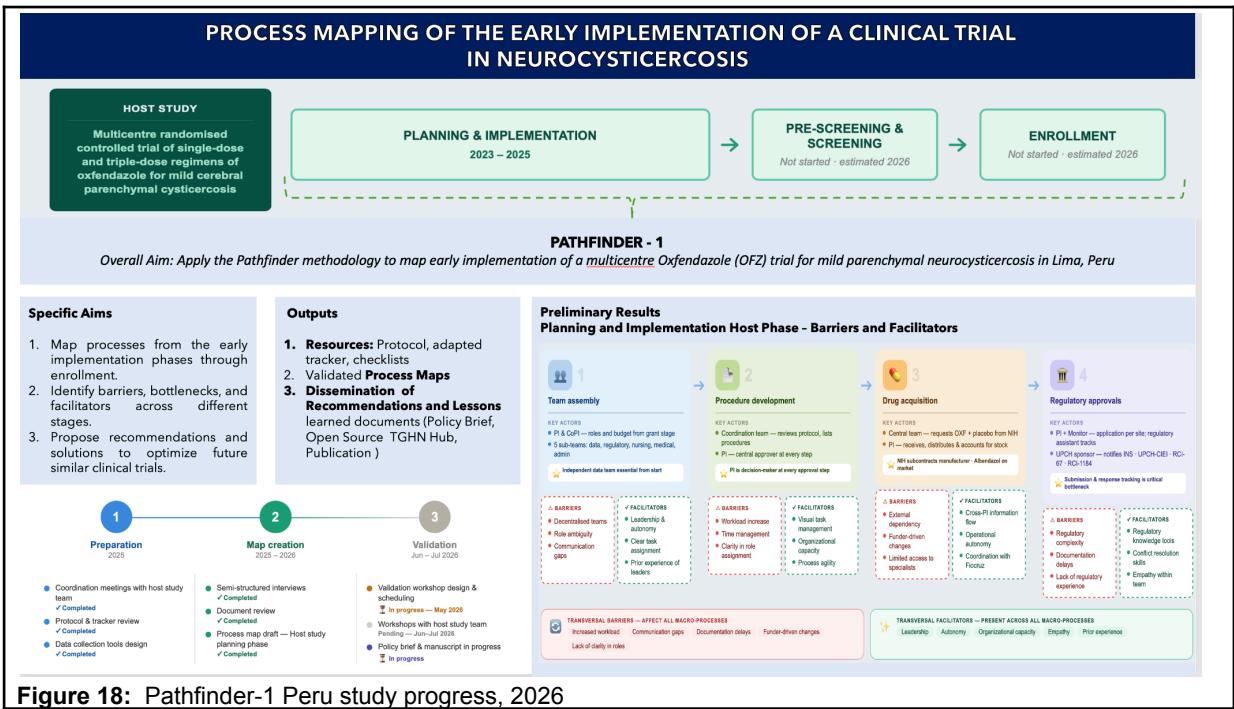


Figure 18: Pathfinder-1 Peru study progress, 2026