



Country Hub Official Launch:

The Global Health Network Philippines



Webinar Moderator

Dr. Pamela Pasco
Hub Manager, SIHI Philippines

Overview

- Partnership with SIHI Global Network: Message of Support from Dr. Beatrice Halpaap
- Welcoming Message from TGHN Global: Opening Remarks from Dr. Salvia Zeeshan
- About TGHN Philippines Network
- Spotlight Features of Member Institutions
- Question and Answer
- Closing Remarks: Message from Dr. Meredith Del Pilar-Labarda



Partner's Message of Support: SIHI Global Network

Dr. Beatrice Halpaap

Co-Founder and Senior Programme Manager

Welcoming Message

Dr. Salvia Zeeshan

Senior Project Manager of Regional Programmes

The Global Health Network, University of Oxford

The Global Health Network

Enabling all healthcare settings to generate & benefit from evidence



Creating equity in access to knowledge and opportunities: connecting between researchers, research organisations and communities

The Persistent Gap this is Tackling

90% of the world's research still only benefits less than 10% of the global population

Of the research undertaken in LMICs most is still design and led from elsewhere and data is extracted

Common perceptions persist that research is R&D regulatory trials and 'not for me'

Countries remain dependent on outside leadership and donors

The Global Call to Action

WHA 75.8 directive on clinical trials called for:

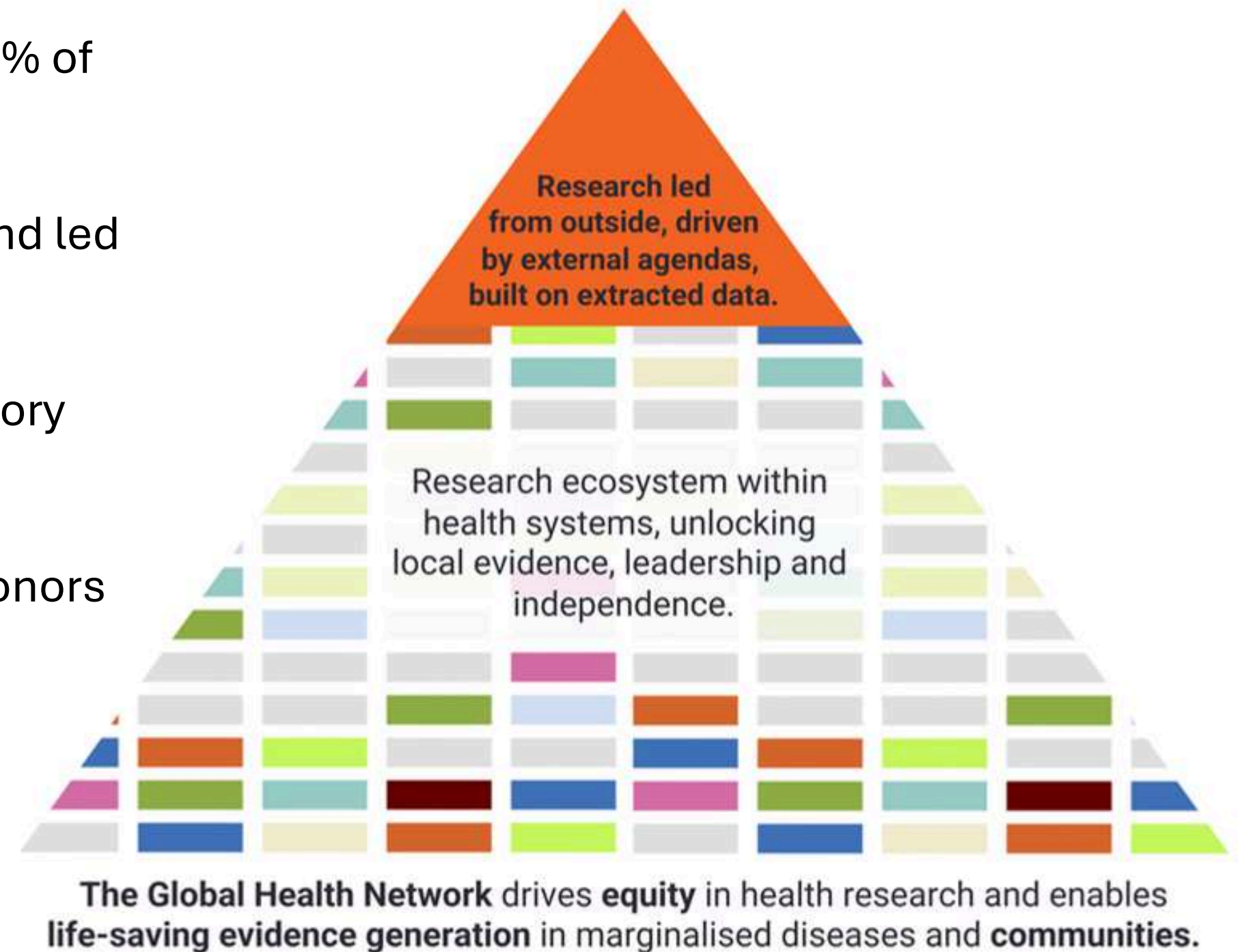
- Countries to strengthen their research systems
- Better globally connected research ecosystems
- WHO tasked with implementing this resolution

Accepted that research is the route out of all disease burdens: every day and outbreaks



WHO collaborating Centre for knowledge sharing and capacity development

Global Health Research Inequity





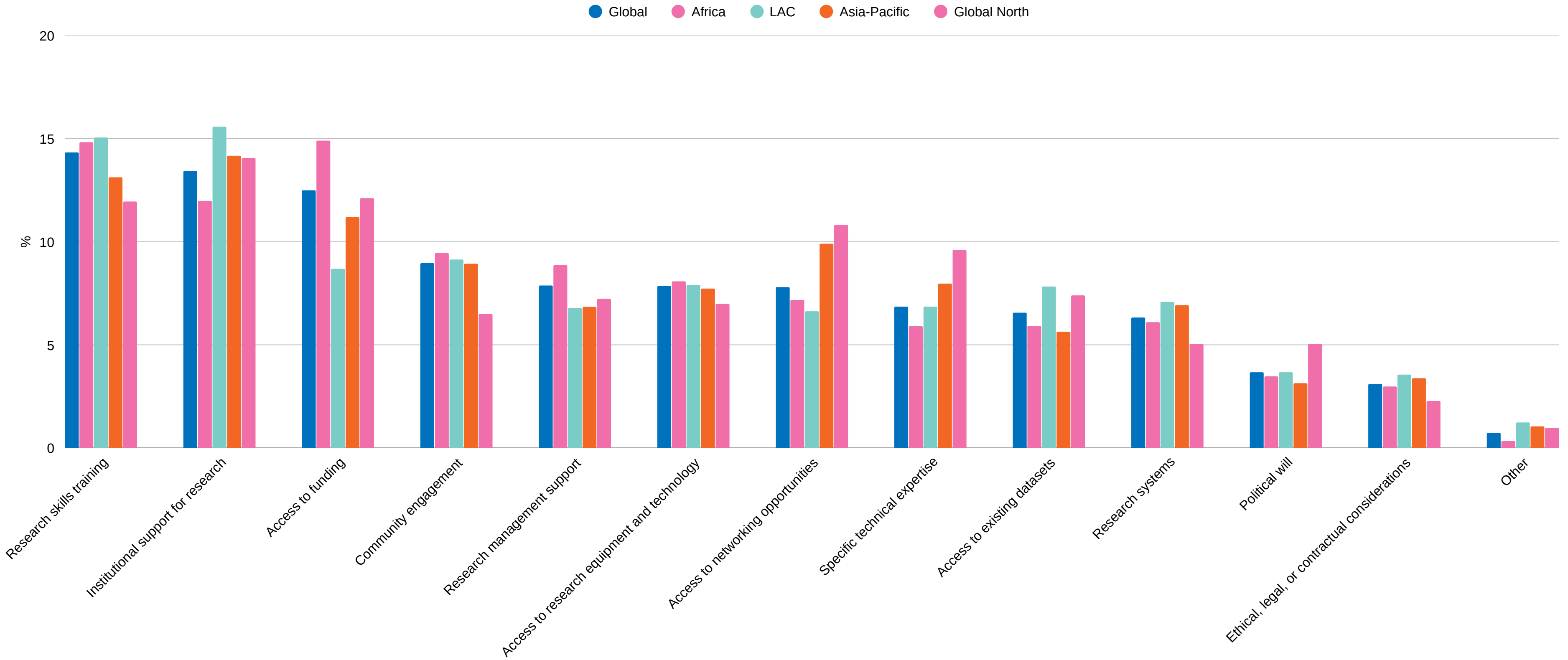
Over **1.2 million health workers and researchers** connecting with each other and over **60 research organisations and networks** mobilising knowledge, methods, tools and resources



WHO collaborating Centre for knowledge sharing and capacity development



Research Enablers: Quantitative Results



Used by over 60 organisations to reach The Global Health Network Community Members

.... And they come to access the resources, tools and training these organisations, networks and projects share. Online and in person

This collage features several web portals from The Global Health Network:

- CEPI Technical Resources:** A portal for the Coalition for Epidemic Preparedness Innovations, featuring a search bar and navigation links like 'Home', 'About', 'Research and Development', 'Manufacturing', 'Biorecuzity', 'COVAX Archive', 'Partner with us', 'Contact', and 'Priority Diseases'.
- UK Overseas Territories Public Health Network:** A portal for public health in the UK Overseas Territories, with a search bar and navigation links like 'Home', 'About', 'Resources', and 'Africa'.
- LactaHub – Breastfeeding Knowledge:** A portal dedicated to breastfeeding knowledge, with a search bar and navigation links like 'Home', 'About', 'Resources', and 'Africa'.
- EDCTP Knowledge Hub:** A portal for the European and Developing Countries Clinical Trials Partnership, with a search bar and navigation links like 'Home', 'About', 'Resources', 'Data Management', 'Data Sharing', 'Research into Policy', 'Training', 'News', and 'Glossary'.
- mesh:** A community engagement network portal, with a search bar and navigation links like 'Home', 'About', 'Resources', 'Theme areas', 'Programme hubs', 'Events & training', 'Get involved', 'Find Funding', 'Partners', and 'Mesh LAC'.

This collage features various training and research resources:

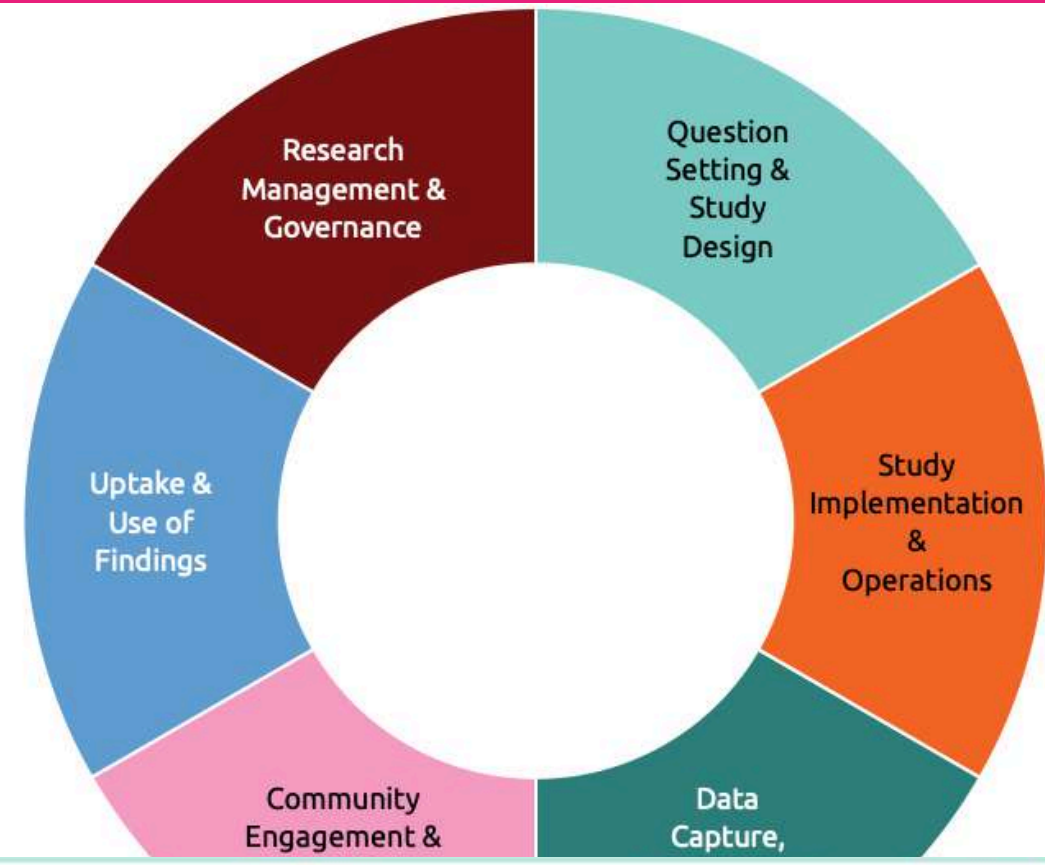
- Global Health Training Centre:** A portal for global health training, with a search bar and navigation links like 'Home', 'Learning Centre', 'Professional Development', 'Workshops and Knowledge', 'Community', 'Resources', and 'About This Site'.
- Essential Research Skills Training Curriculum:** A curriculum for developing an evidence-led essential research skills training curriculum, with a search bar and navigation links like 'Home', 'About', 'Resources', and 'About This Site'.
- Good Clinical Laboratory Practice:** A portal for good clinical laboratory practice, with a search bar and navigation links like 'Home', 'About', 'Resources', and 'About This Site'.
- Research Ethics Online Training:** A portal for research ethics online training, with a search bar and navigation links like 'Home', 'About', 'Resources', and 'About This Site'.
- Workshops:** A portal for workshops, with a search bar and navigation links like 'Home', 'About', 'Resources', and 'About This Site'.
- Professional Skills:** A circular diagram illustrating professional skills, including Scientific Thinking, Ethical Quality & Risk Management, Research Operations, and Study & Site(s) Management.

This section illustrates four collaborative models:

- Research Club:** A panel showing a group of people engaged in a discussion.
- Supported Learning:** A panel showing a person working at a computer.
- Twining:** A panel showing two people looking at a document together.
- Data Club Data Clinic:** A panel showing a person using a tablet and a laptop.

"Community Engagement is not just a part of global health research; it's its heart and soul. It ensures that our efforts are not only scientifically sound, but also socially relevant and culturally sensitive."

Working because this is connecting online and in person



| | | | |
|---|---|---|---|
| MIRNA Maternal Immunisation Readiness Network in Africa & Asia (MIRNA) working across nine countries to... VISIT SITE > | Global Malaria Research A knowledge hub with training, toolkits and relevant resources for the global malaria research community. VISIT SITE > | Global Snakebite Research This snakebite research community showcases global snakebite research initiatives, provides resources for... VISIT SITE > | Global Outbreaks Research Global Outbreaks Research is a comprehensive and dynamic community aiming to support an... VISIT SITE > |
| Vivli Knowledge Hub Vivli is working to advance human health through global clinical research data sharing. VISIT SITE > | Sub-Saharan Congenital Anomalies Network (sSCAN) The sub-Saharan African Congenital Anomalies Network (sSCAN) is a regional Congenital Anomalies (CA)... VISIT SITE > | Global Health Data Science Global Health Data Science is a free, open access network for anyone working in data science, data... VISIT SITE > | Global Cancer Research Global Cancer Research knowledge hub formed by researchers, academics and global health practitioners VISIT SITE > |
| Africa CDC Africa CDC is a specialized technical institution of the African Union that strengthens the capacity and... VISIT SITE > | AI for Global Health Research Welcome to the Artificial Intelligence (AI) for Global Health Research hub. Our aim is to advance the... VISIT SITE > | Global Medicines Safety Global Medicines Safety, an open-access collaborative forum for sharing knowledge, experience and tools... VISIT SITE > | MRC Clinical Trials Unit at UCL This Hub aims to provide resources on the design, conduct, analysis, and knowledge transfer... VISIT SITE > |
| ARCH Welcome to the ARCH Hub: Applying Research to Policy and Practice for Health. If research is to deliver its... VISIT SITE > | IHR-SP The International Health Regulations Strengthening Programme is a UK Aid funded technical... VISIT SITE > | Virtual Biorepository Virtual Biorepository knowledge hub - a forum for sharing and gathering information about a proposed... VISIT SITE > | CONNECT CONNECT is a collaborative open-access web forum aimed at strengthening the capacity of health... VISIT SITE > |
| Rapid Support Team | The Global Health Network Africa | The Global Health Network Asia | The Global Health Network LAC |

THE GLOBAL HEALTH NETWORK [Donate Now](#) [Email](#) [Password](#) [LOG IN/REGISTER MORE](#)

Global Health Training Centre

What are you looking for? [SEARCH](#)

Home | eLearning Courses | PgDip in GHR | Professional Development | Webinars and Workshops | Resources Gateway | Donate | FAQ | Contact

eLearning Courses

Discover a diversity of self-paced online courses covering all steps of the research cycle for conducting high-quality research. Explore the full set of courses by browsing the course titles below. All courses are peer-reviewed and regularly updated by experts in the field. Learners receive a certificate from The Global Health Network upon achieving at least 80% on course quizzes.

| | | | | | | |
|---|--|---|---|--|---|--------------------------------|
| Question Setting & Study Design (8 courses) | Study Implementation & Operations (16 courses) | Data Capture, Management & Analysis (9 courses) | Community Engagement & Public Involvement (5 courses) | Uptake and Use of Findings (5 courses) | Research Management & Governance (10 courses) | Disease Resources (14 courses) |
|---|--|---|---|--|---|--------------------------------|

NEW COURSES

| | | |
|--|--|---|
| ICH Good Clinical Practice E6(R3) Providing a framework of principles aiming to ensure the safety of | Data and Sample Governance for Biomedical Research This course introduces the principles | Introduction and Practical guide to CEI Aims to develop learners' understanding and knowledge |
|--|--|---|

THE GLOBAL HEALTH NETWORK COUNTRY HUBS

Countries

The Global Health Network is a neutral, respected and established global network (WHO collaborating centre) from which Country Centres can provide research and capacity development support

The Country Centre works with The Global Health Network to strengthen the health research in a federated collaboration model, the Country Centre is an active leader in expanding The Global Health Network to new communities in the Global South.

THE GLOBAL HEALTH NETWORK ASIA



Home Regional Activities Resources Countries eLearning Career Support

Welcome to The Global Health Network Pakistan

This community aims to bring health research ability and activities to every healthcare setting in Pakistan. The utmost goal is to bring equity where research happens.

"Equity in Health Research by improving methods, building careers & sharing knowledge"

In line with this vision, The Global Health Network (TGHN) is partnering with Shaukat Khanum Memorial Cancer Hospital and Research Centres to establish TGHN Pakistan to collaboratively work towards enabling research in every healthcare setting by sharing knowledge and methods.

Shaukat Khanum Memorial Cancer Hospital & Research Centres are state-of-the-art non-profit cancer treatment and research centres located in Pakistan and the only dedicated cancer treatment network in the country. Research is part of the hospital's mission statement, and the hospital provides dedicated resources and infrastructure for basic, epidemiological and clinical research into the causes and treatment of cancer, since its inception in 1994, leading to high output in the field of health research within Pakistan.



ABOUT US →



GET INVOLVED →



RESOURCES →



EVENTS →

The Global Health Network MENA

THE GLOBAL HEALTH NETWORK MIDDLE EAST AND NORTH AFRICA



Home About Regional Activities eLearning Resources Career Support Contact Us



THE GLOBAL HEALTH NETWORK AFRICA

Home Regional Activities Funding Current Projects Resources Countries eLearning About Meet the team Regional Map Contact Translate Impact

The Global Health Network Africa
aims to bring health research ability and activities to every healthcare setting in Africa who benefits from the evidence produced. We focus on research and practices across the African region.



Rwanda Tanzania TGHN Guinea Cameroon TGHN Ghana

The Global Health Network Nigeria

Information and resources on global health research activities in Nigeria.

Use your work on health research in Nigeria or get involved in our initiatives, drop us an email, and let's get started!

About Us

In line with the vision of The Global Health Network (TGHN), "Equity in Health Research by improving methods, building careers & sharing knowledge", the Nigerian Centre for The Global Health Network is established as a hub to strengthen the country's research capacity



Enabling evidence into practice and building evidence systems in health systems

Study Builder

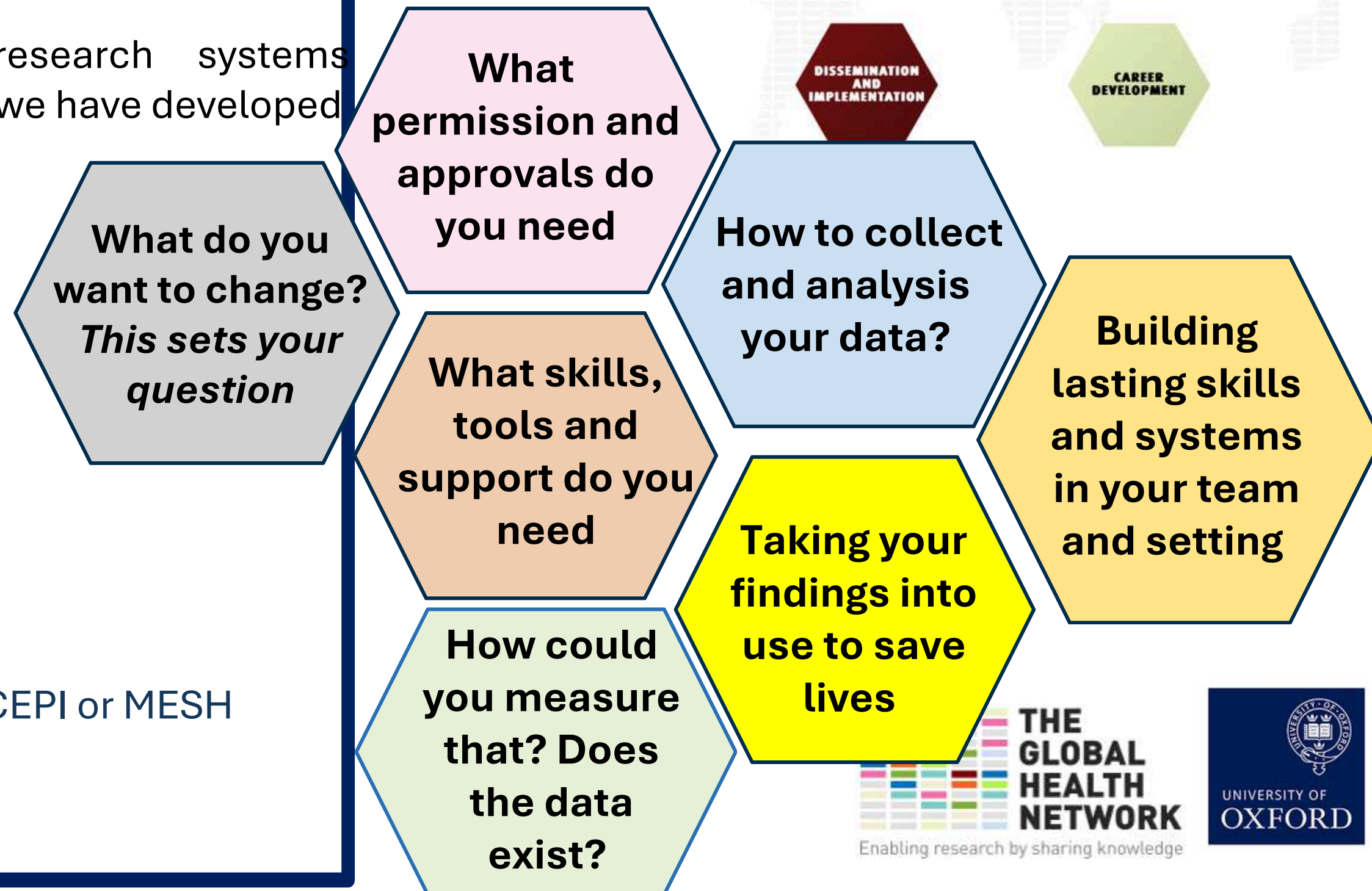
Walk through the research process and learn how to build a study step-by-step



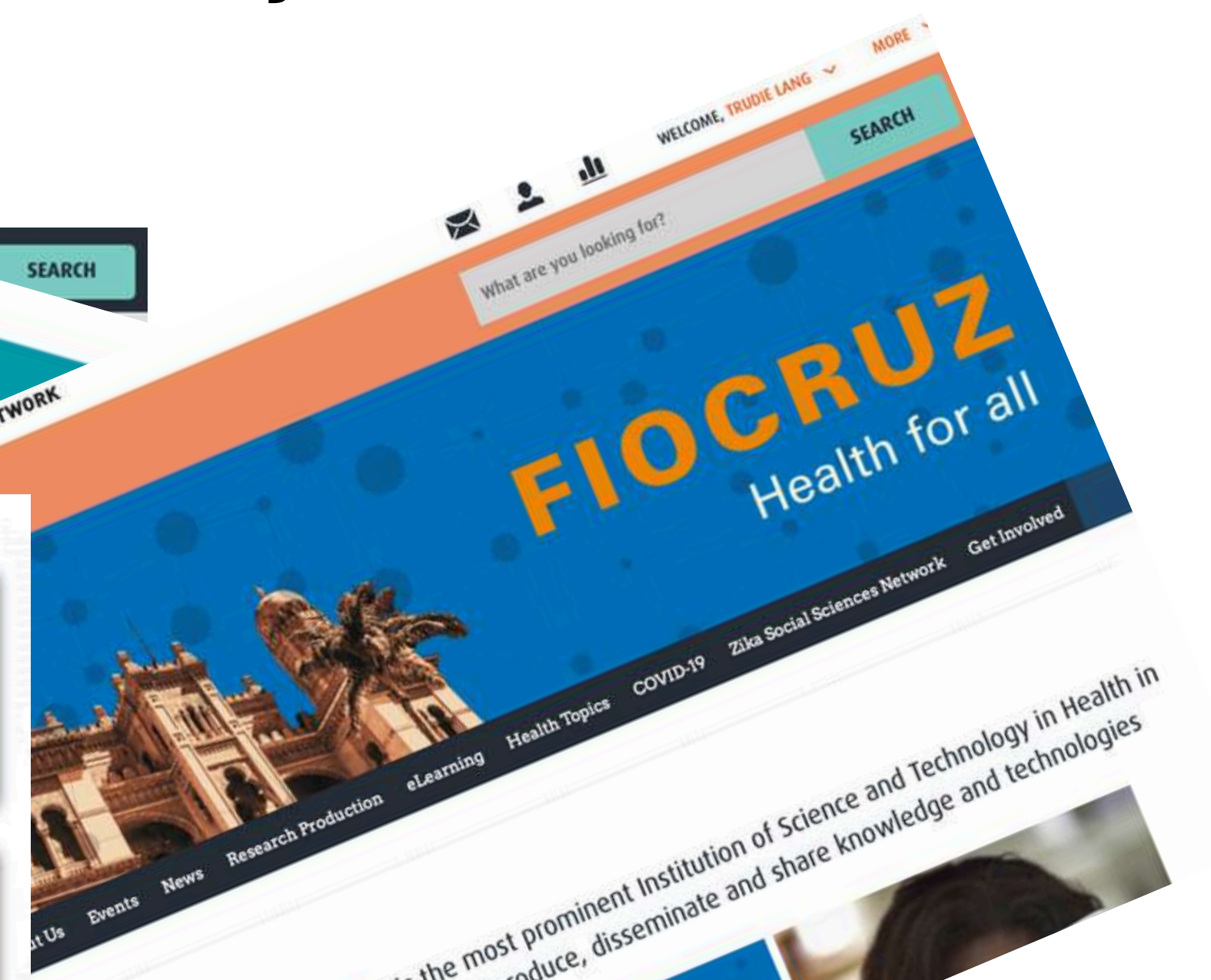
The Global Health Network Research Clubs

The most impactful mechanism for research systems strengthening and knowledge mobilisation that we have developed

- Create the mandate
- Support such as peer: peer networks
- Powerfully cascade
- Route to access to online learning, tools and resources
- No cost – huge return for local health care
- Can deliver focus topics and address gaps
- Identify local priorities
- Easy, agile and scalable
- Can deliver for partners such as WHO and collaborators with new training etc such as CEPI or MESH



Used by organisations such as WHO, CEPI, IDRC, EDCTP and Wellcome
To reach the research community and deliver systematic methods and
research system strengthening



Research Tools

- Certificated learning and training tools to provide clinical research skills.
- Tool to build a professional profile and record career development.
- PROCESS MAP
- *NEW* GLOBAL HEALTH RESEARCH PROCESS MAP
- THE GLOBAL HEALTH NETWORK COLLECTIONS
- GLOBAL DRUG DEVELOPMENT

Home Impact Ab

Home

Welcome to the Artificially intelligent and responsible AI that improves research opportunities.

This knowledge hub focuses on Prevention Preparedness and Response

THEMES > **GET INVOLVED >** **RESOURCES >**



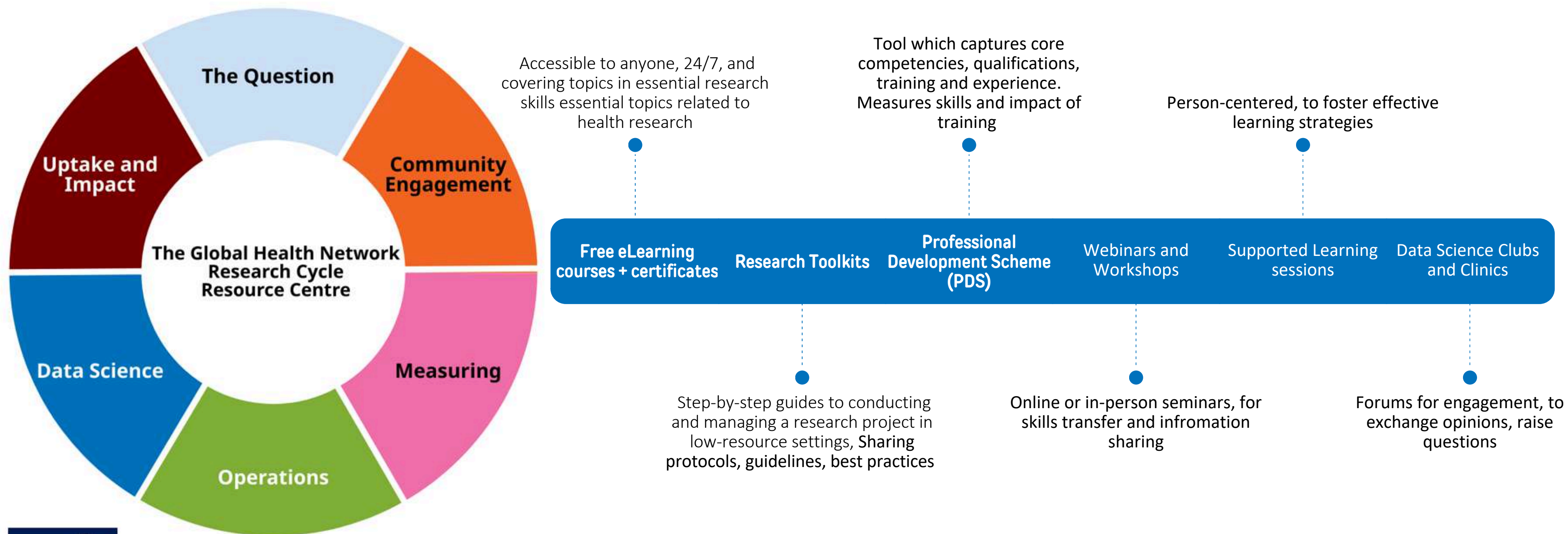
Welcome!

The Oswaldo Cruz Foundation (Fiocruz) is the most prominent Institution of Science and Technology in Health in Latin America, based in Brazil. Its mission is to produce, disseminate and share knowledge and technologies

FIOCRUZ RESEARCH PRODUCTION

accelerates the production of vaccines and diagnostics to the region.

Access to Resources and Training – discovering what they didn't know



The Global Health Network Pathway to Impact Mixed-Method Evidence Framework – **FOR TEAMS, NETWORKS, PROJECTS - INDIVIDUALS**

- A schematic example

Research Practitioners : FINDING & SHARING KNOWLEDGE

Each point of interaction with TGHN
Where knowledge, skills or connections are found and applied; either in person through regional activities or via the online platform

INTERACTION WITH TGHN*



These case studies capture each point AND the qualitative data to record how these enabled their studies to happen, barriers overcome and for teams and systems to be strengthened over time through this pathway; precise, responsive and agile to their needs over time

A totally different capacity development model
Strengthening research systems in health system

DIRECTLY IMPACTING 5 SDGs



SDG3 HEALTH

New evidence generated and implemented in outcomes in priority diseases such as malaria, cholera and maternal health



SDG5 GENDER EQUITY

Focus on women in health research design and women as research leaders



SDG8 DECENT WORK & ECONOMIC GROWTH

Workplace research skills development and growing teams who can lead internationally competitive research programmes



SDG9 INDUSTRY, INNOVATION AND INFRASTRUCTURE

Building research systems in health systems: Data science systems and technology, the best methodology and processes



SDG10 REDUCED INEQUALITIES

Equity in where research happens, who leads and who benefits. Equitable access to knowledge and know-how



We are all The Global Health Network!

www.TheGlobalHealthNetwork.org

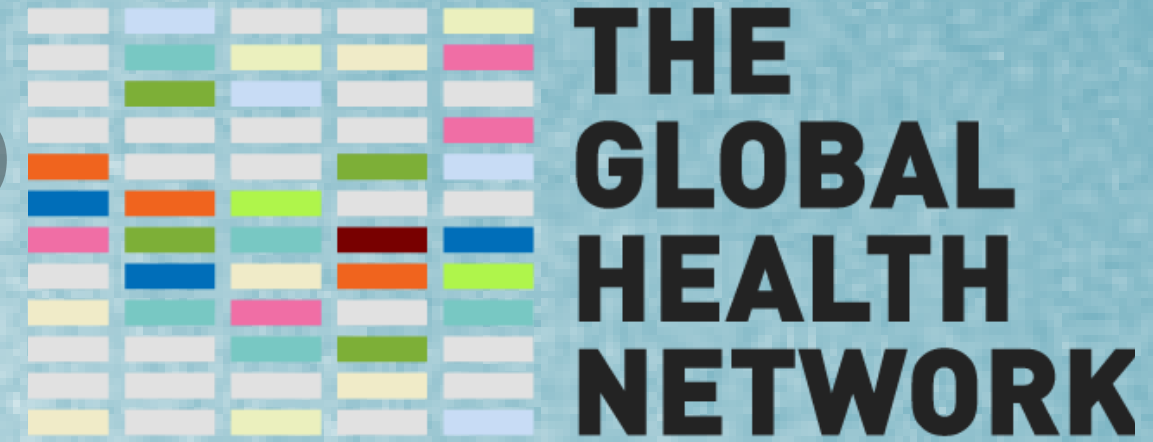


Thanks

About T.G.H.N Philippines

Dr. Pamela Pasco
Hub Manager, SIHI Philippines

What is TGHN?



Enabling research by sharing knowledge

- An international community of 1.2M+ members in global health research
- Mission: Enable equitable, high-quality global health research
- A platform for training, resources, communities of practice, and networking



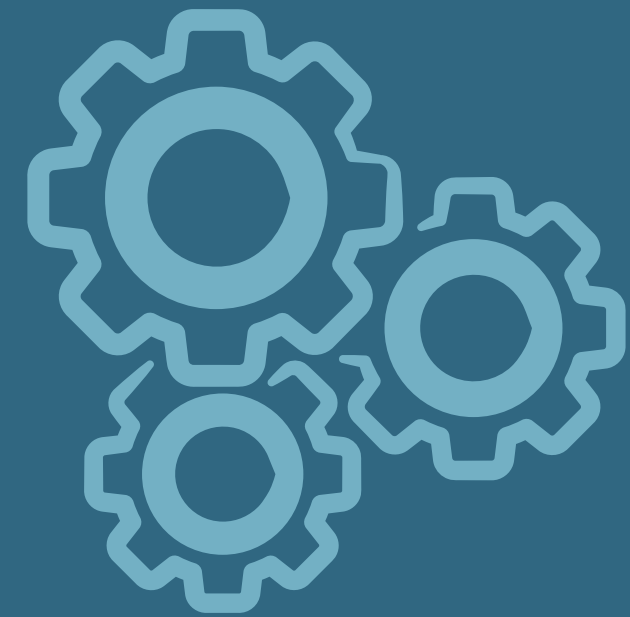
TGHN Objectives



To **embed health research** in places where evidence is lacking

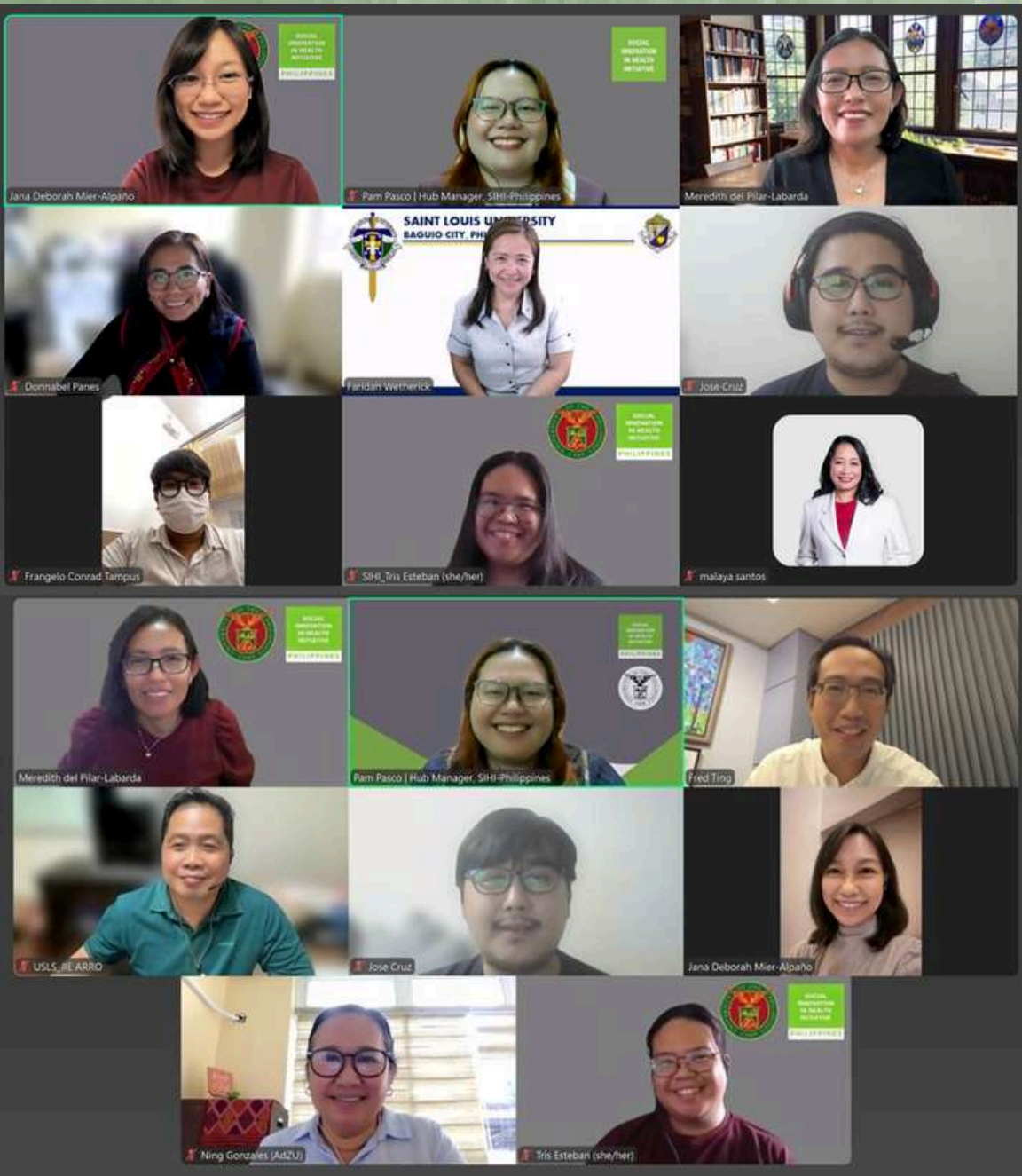


To **drive equity** in who takes part and who benefits from health research



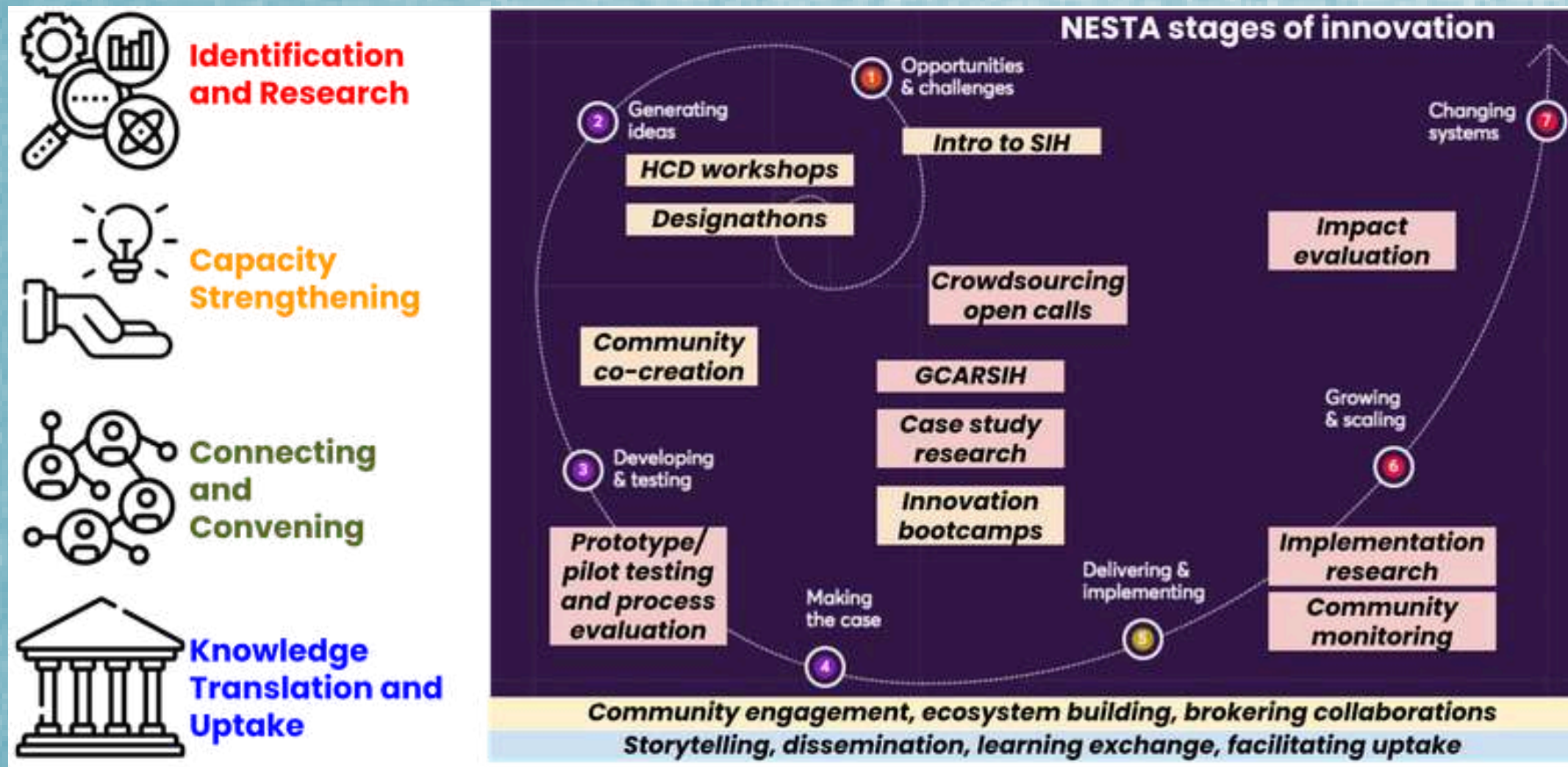
To **build lasting capable research teams in low-resource settings** who are able to lead

How it Started



- Starting **October 2024**, University of Oxford and University of the Philippines Manila officially partnered to **strengthen capacity, share knowledge, and connect excellence in health research** by collaborating with The Global Health Network
- Experience in **network-building and research capacity building**, along with the **expansion of SIHI's ecosystem-building and embedding social innovation** into wider global health research and implementation.
- Acts as a national gateway for **collaboration, training, and knowledge sharing.**

What is SIHI?



- Established in 2017, with the support of TDR
- Hosted by the UP College of Medicine - Department of Clinical Epidemiology
- In 2024, transitioned into the Program on Social Innovation and Entrepreneurship in Health (PSIEH) under the NIH-Institute of Clinical Epidemiology

TGHN Philippines Country Hub

Serves as a bridge between Philippine institutions and the global health research community



MAPPING
INSTITUTIONS
ENGAGED IN GLOBAL
HEALTH WORK



CONDUCTING NEEDS
ASSESSMENTS FOR
KNOWLEDGE GAP AND
RESEARCH SKILLS



LINKING LOCAL
STAKEHOLDERS TO
TGHN GLOBAL
RESOURCES



ORGANIZING
CAPACITY
STRENGTHENING
ACTIVITIES

Initial Findings

Works in Global Health

- Research in **Health System** and **Access**
- **Education, community engagement, capacity building, and international collaborations**
- **Integration** of global health in school **curricula**
- **Student organizations** for global and public health

Capacity Strengthening Needs

- **Fragmented** collaboration: limited interdisciplinary and translational research integration
- **Limited** access to **funding** and **resources**
- **Insufficient** research **management** systems
- **Capacity gaps** in research **methods**

Initial Findings

Opportunities and Beneficial Activities

- TGHN e-learning and **certifications**
- **Interdisciplinary** research training and collaboration
- Research **grant writing capacity building** and workshops
- Technical assistance in **ethics and policy translation**
- International research **exchange and networking** programs

Message or comment / any other activities / initiatives you hope to see from TGHN Philippines!





Where can you find us?



TGHN Global
Network



TGHN Asia
Hub



TGHN Philippines
Country Center

philippines@socialinnovationinhealth.org

Who are part of TGHN Philippines?



SCHOOL OF MEDICINE



Spotlight Features: Member Institutions

Saint Louis University

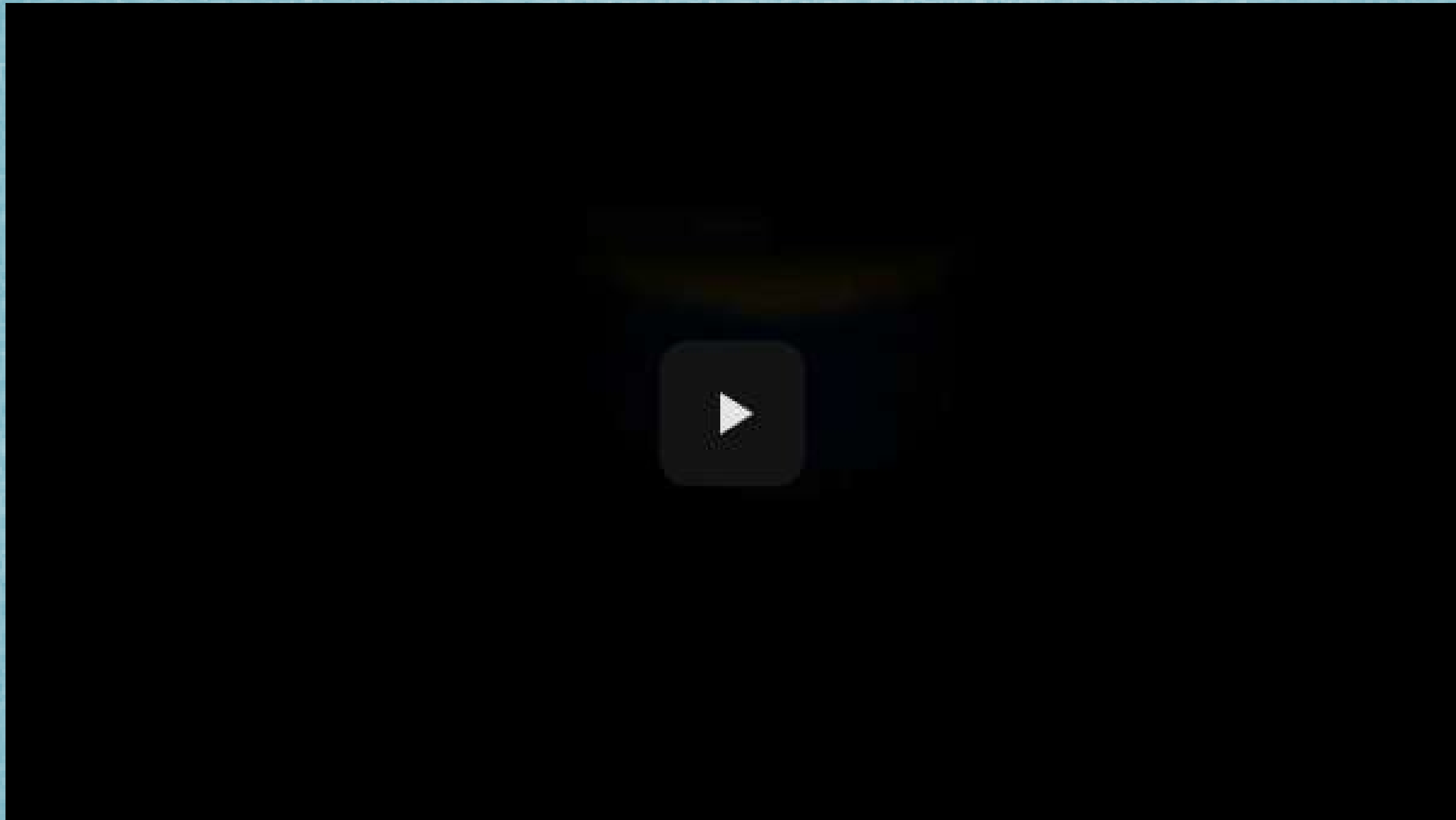
Location: Baguio City, Benguet

Region: Cordillera, Luzon

Known for: Interdisciplinary approach, practicum in rural and indigenous communities



The Global Health Network Philippines



Mapua School of Medicine

MAPÚA
UNIVERSITY

In collaboration with
Arizona State University®



SCHOOL OF MEDICINE

Location: Makati City, Metro Manila

Region: NCR, Luzon

Strengths: Climate & planetary health education

The Global Health Network Philippines



University of St. La Salle



Location: Bacolod City, Negros Occidental

Region: Western Visayas

Known for: Center for Research & Engagement,
collaborating with hospitals, local governments &
communities

USLS

Building Community-Engaged Health Research Innovation for Underserved Communities



TGHN Philippines Launch
April 21, 2026



University of the Philippines Manila – School of Health Sciences





3 GOOD HEALTH
AND WELL-BEING



4 QUALITY
EDUCATION



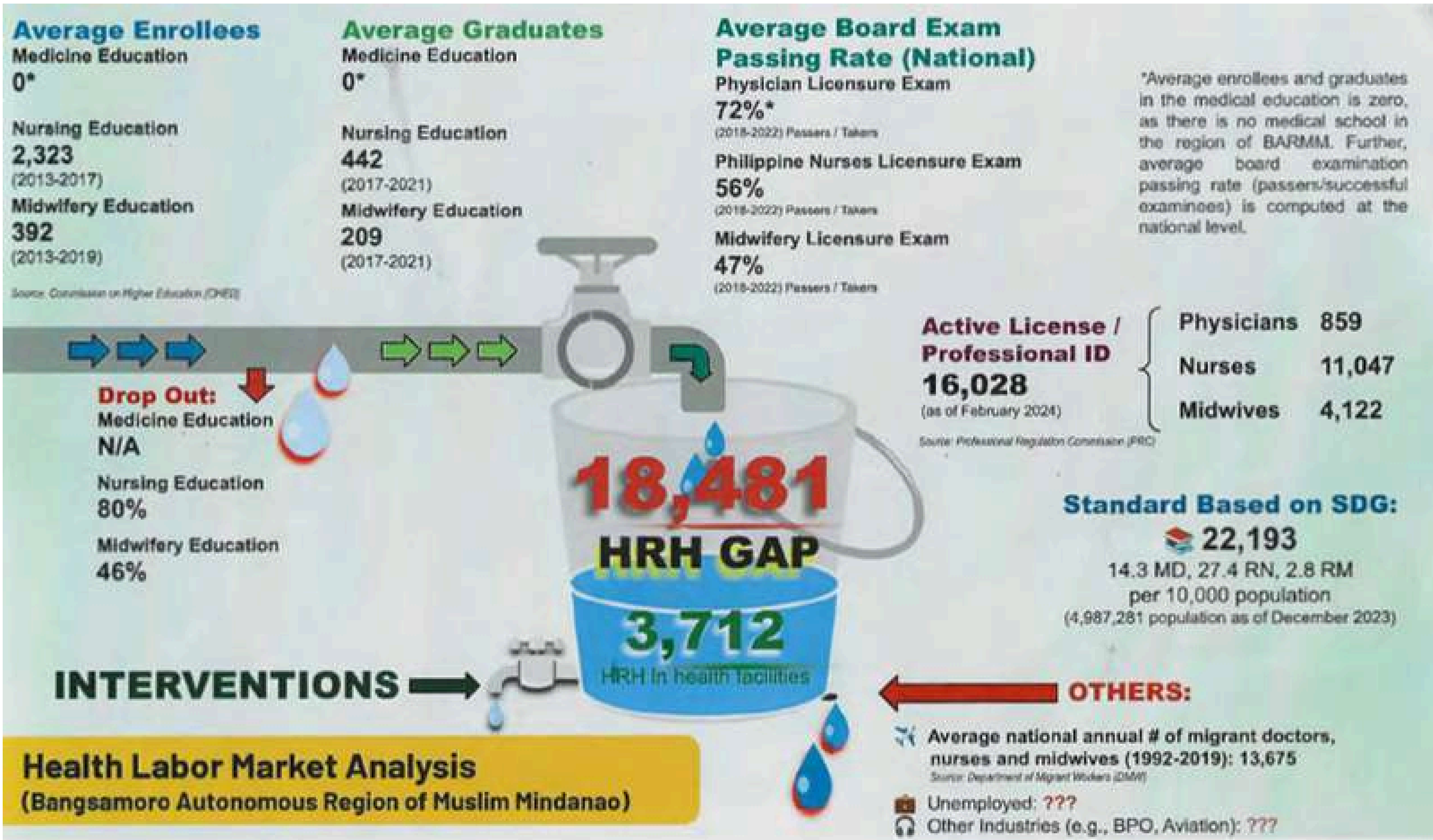
Championing the Community Based Ladderized Curriculum Model for Sustainable HRH Development

Charlie E. Labarda, MD, PhD

Professor and Dean

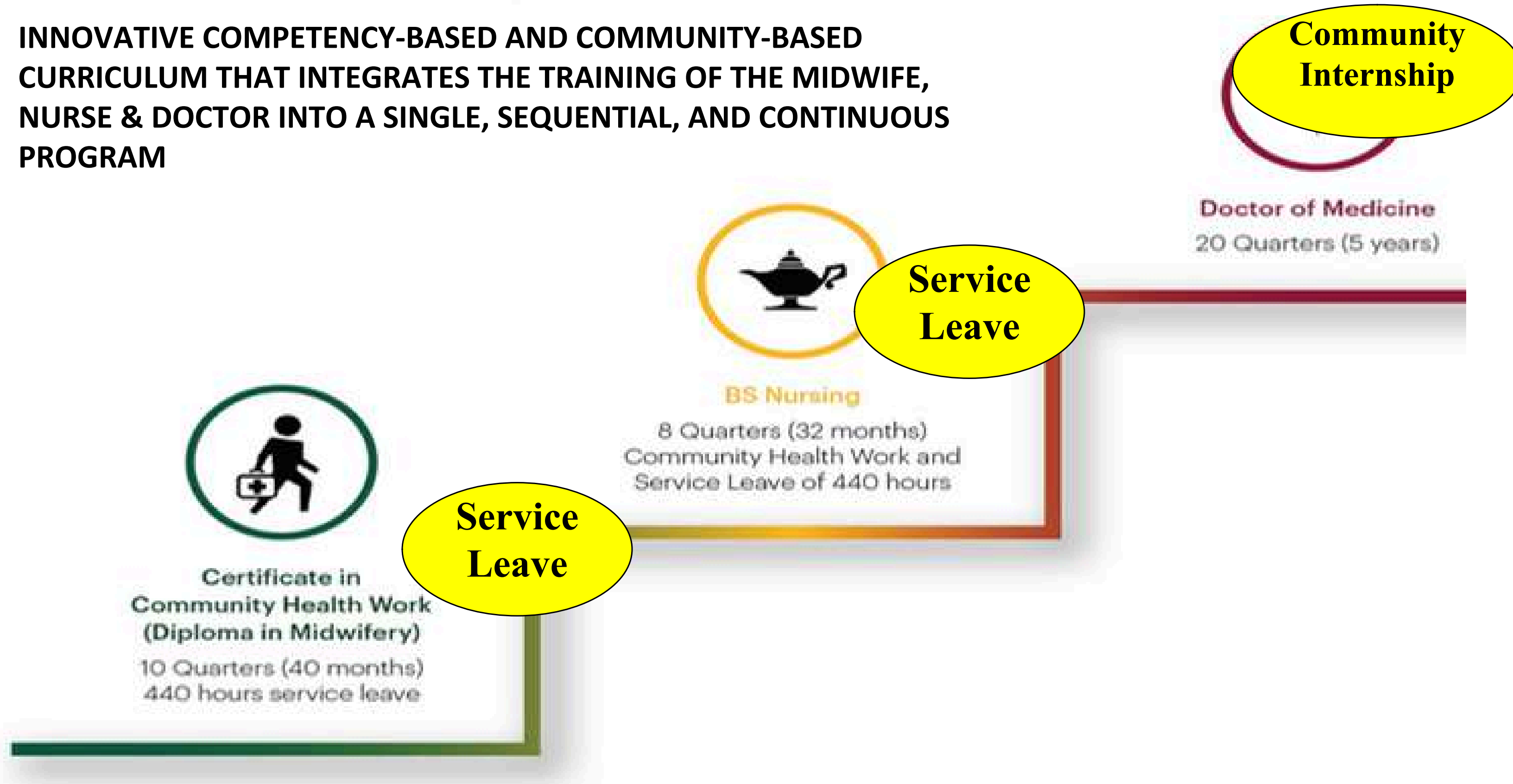
The University of the Philippines School of Health Sciences

HRH Inequity in the Philippines



UPM-SHS Step-Ladder Program

INNOVATIVE COMPETENCY-BASED AND COMMUNITY-BASED CURRICULUM THAT INTEGRATES THE TRAINING OF THE MIDWIFE, NURSE & DOCTOR INTO A SINGLE, SEQUENTIAL, AND CONTINUOUS PROGRAM



The Global Health Network Philippines



Spotlight Features: Member Institutions

Question & Answer

Closing Remarks

Dr. Meredith Del Pilar-Labarda
Lead, SIHI Philippines & SIHI Secretariat

Session Photo



TGHN Global Network



TGHN Asia Hub



TGHN Philippines Country Center

Country Hub Official Launch: The Global Health Network Philippines

