



Climate and health public engagement Leadership program

Topic area: Public engagement

Session title: Understanding the climate x health funding landscape

Funded by

Dalberg



PE for fundraising: overview of sessions



Understanding the climate x health funding landscape

Discussing trends in the climate x health landscape and understanding what funders look for



Focus of this session



Planning PE for fundraising

Introducing the fundraising cycle to strengthen your toolkit for how best to engage funders

Agenda

- | | | |
|----|--|-----------|
| 01 | Why focus on fundraising? | (15 mins) |
| 02 | What does the climate x health funder landscape look like? | (35 mins) |
| | (break) | (10 mins) |
| 03 | Funder panel discussion and Q&A | (55 mins) |
| 04 | Reflections | (5 mins) |

Why focus on fundraising?

Why do we need a fundraising strategy?

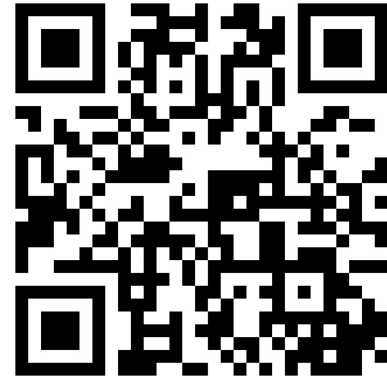
INTERACTIVE ACTIVITY: Menti Poll



5 mins

Why is fundraising important for meeting the needs and objectives that you/your organization have?

To enter your response, go to Menti.com using the link shared in chat, or scan the QR code



Why focus on fundraising?

1 Fundraising helps both meet immediate needs and sustain growth

We need funds; so when we get them, we feel pressured to say yes to all of our funders asks

We need to think strategically and plan how we will sustain the growth around the corner

We have money now, but there is a lot of uncertainty about what will happen after this grant

Our staff is spread too thin due to lack of resources

Fundraising is even harder when you are a consortium...

Strong management of the fundraising cycle enables you to manage funds and funders in a more sustainable manner, breaking from a boom and bust rhythm

1 Why focus on fundraising?

How do you feel about fundraising?

INTERACTIVE ACTIVITY: Share in chat



2 mins

*Does fundraising fill you with joy or fear?
Share an emoji in the chat that represents how you
feel about fundraising*

02 What does the climate x health funding landscape look like?

What does the climate x health funding landscape look like?

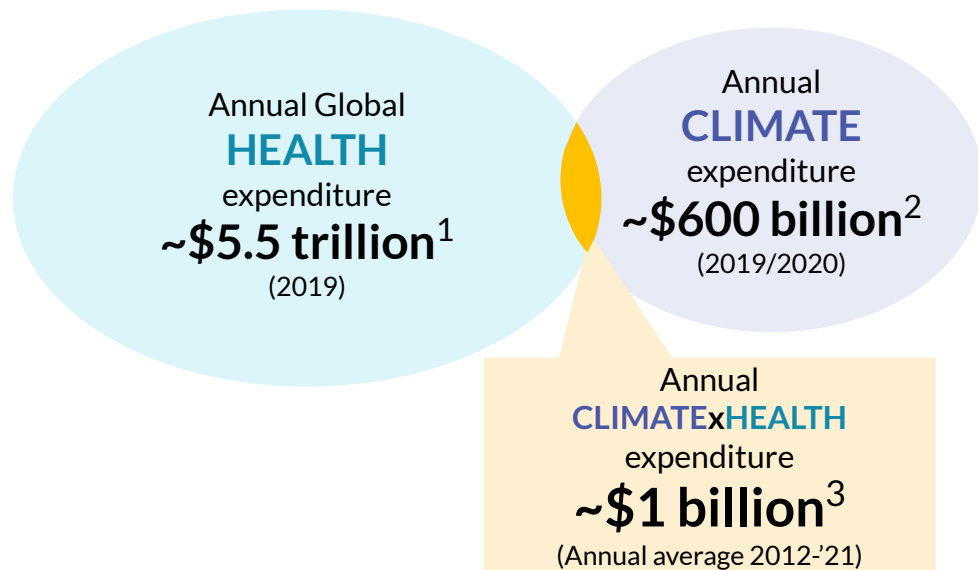
2

There is growing recognition of the importance of the CxH nexus, but many organizations still focus on C or H in isolation

Today, the CxH nexus represents only a small sub-set of the broader climate and/or health universe...

...but interest in this nascent space is increasing

Dalberg



- The CxH nexus is obtaining **increasing recognition from funders** and other actors
- It is a nascent space, and **lacks a common definition** of what constitutes CxH...
- ...this impacts what **themes, type of work, and funding sources** funders consider
- There is now an **opportunity to push funders beyond climate and health siloes** to fund the CxH intersection

Source: (1) Global Health Expenditure in 2019, excluding out-of-pocket (estimated to be 35% of total). World Health Organization (2022). "Global spending on health". In 2020, global health expenditure rose by 6%, driven by response to COVID-19 pandemic;. (2) Annual average across 2019 and 2020 - Climate Policy Initiative (2021). "Global Landscape of Climate Finance". (3) Dalberg analysis of Dimensions (public research) and Candid (philanthropic) grants databases (CxH grants from 2012 to 2021), **Note:** expenditure include includes money disbursed by all the funder types (public and private), and fund uses (research, aid, implementation, others), but excludes individual spending and out-of-pocket costs.

How do you define climate x health in your work?

INTERACTIVE ACTIVITY: Menti poll



5 mins

1. *How do you define climate x health in your work?*
2. *On a scale of 1-5, how easy or hard do you find it to define and explain climate x health for funding applications?*

To enter your response, go to Menti.com using the link shared in chat, or scan the QR code

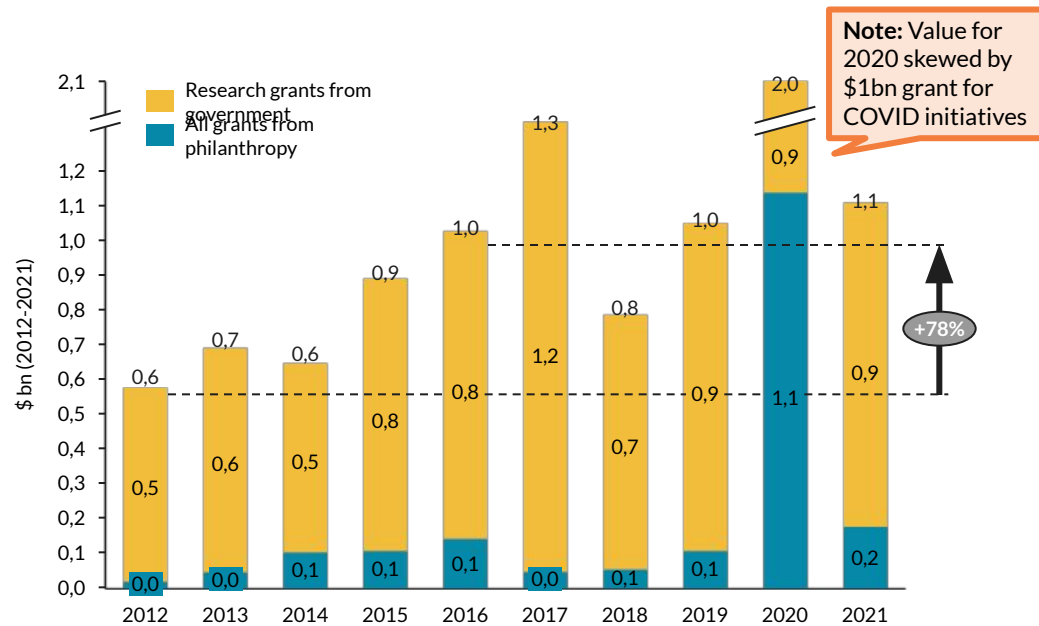


What does the climate x health funding landscape look like?

Interest in CxH is increasing, but funding has not yet increased accordingly

Annual value of grants in CxH²
(USD \$bn, 2012-2021)

Main observations



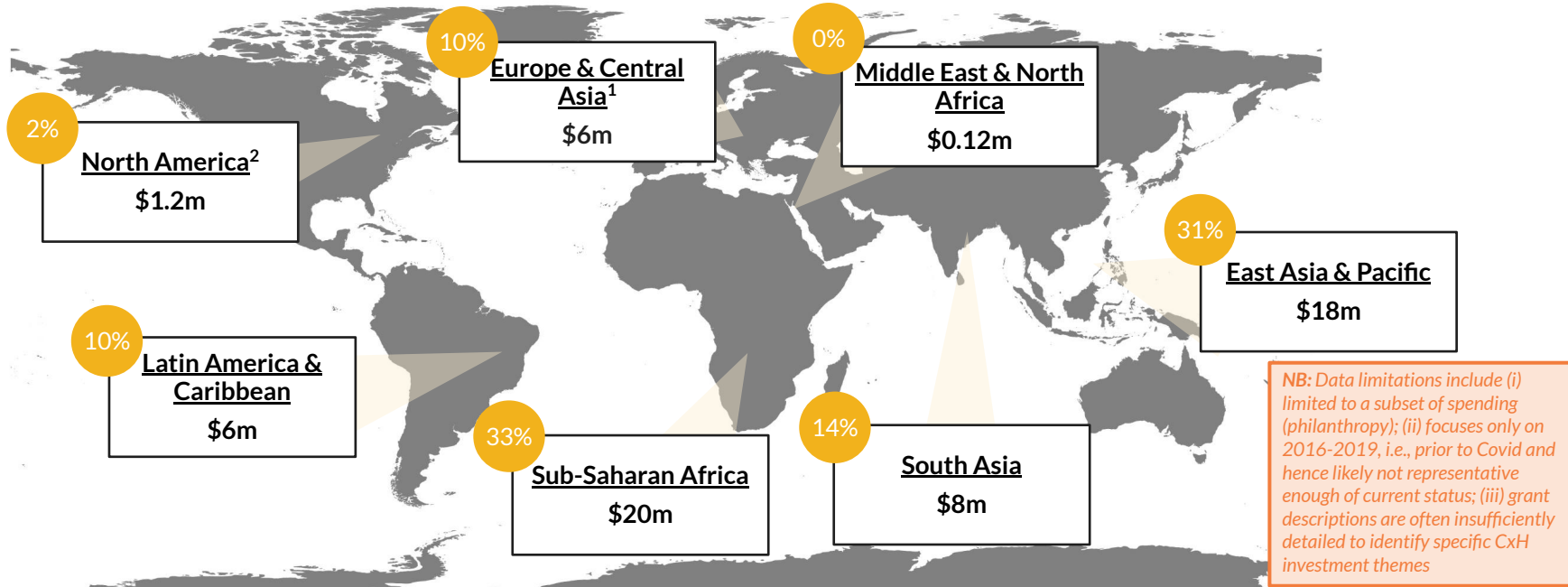
- **Research publications on CxH have been steadily increasing since 2012**, suggesting a growing interest in and desire to understand the intersection³
- **Funding for CxH grew nearly 80% between 2012-2016** but has not grown consistently since 2017, even falling in some years¹
- **More funding has been available for research than implementation** – analysis suggests over 12x more funding goes to research than implementation funding² in a typical year¹

[1] Growth in 2020 treated as exceptional due to COVID funding; [2] **Source:** Dalberg analysis of Dimensions (public research) and Candid (philanthropic) grants databases (CxH grants from 2012 to 2021); [3] **Source:** 'Systematic mapping of global research on climate and health: a machine learning review' (Berrang Ford and colleagues, 2021)

What does the climate x health funding landscape look like?

Most philanthropic funding going to LMICs is linked to CxH projects in East Asia & Pacific and Sub-Saharan Africa

Geographic distribution of CxH philanthropic funding going to projects in LMICs (Total funding between 2016-19, US\$ m)



Source: Dalberg analysis of OECD philanthropic database (CxH grants from 2016 to 2019). Each grant is assigned the geography of the program it funds and/or of the recipient location as available (or weighted average if multiple). Regions are defined according to World Bank Group's categorization. Notes: (1) Reach unspecified developing countries; (2) reflecting research funding to promote the economic development and welfare of developing countries.

What does the climate x health funding landscape look like?

The intersection of climate x health encompasses a broad set of thematic areas and a range of enablers

NON-EXHAUSTIVE



Health-related impacts from climate

Infectious & allergic diseases
linked to changes in weather and habitat

Physical & mental trauma
from extreme weather events

Non-communicable diseases
from air pollution

Malnutrition & dehydration,
from resource scarcity

Enablers

Research & data

Policy, advocacy & systems reform

Health security
(incl. surveillance, monitoring, response)

Social impacts, justice & equality

**Capacity building, technical
assistance, & awareness**

Community engagement



Climate-related impacts from health

Healthcare industry pollution
from health services, facilities, & products

Household pollution
from housing, cooking, & sanitation

Urbanization & transport
from enabling healthy living environments

Land use & resource consumption
from agriculture and food production

02

What does the climate x health funding landscape look like?

Where does your work sit in the climate x health landscape?

INTERACTIVE ACTIVITY: Menti poll



3 mins

Where does your work sit in the climate x health landscape?

To enter your response, go to Menti.com using the link shared in chat, or scan the QR code

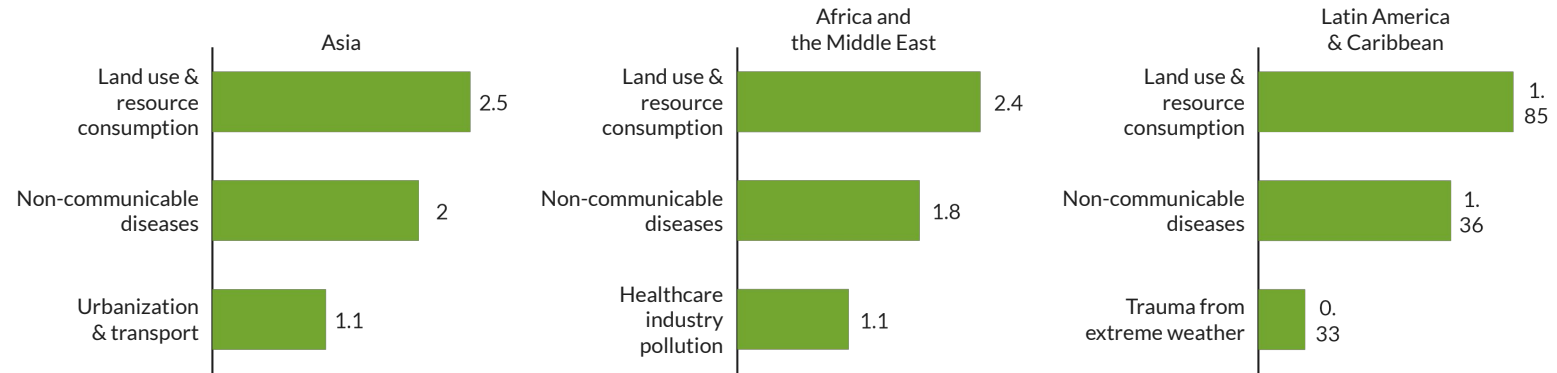


What does the climate x health funding landscape look like?

‘Land use and resource consumption’ received the highest concentration of CxH funding across Asia, Africa and LAC

TOP 3 CxH THEMES ACROSS REGIONS

Amount funded by impact area
(USD \$m, philanthropic funding; 2016-19 total)



Source: OECD private philanthropic funding towards LMICs countries.

Source: Dalberg analysis of OECD philanthropic database (CxH grants from 2016 to 2019). Each grant is assigned the geography of the program it funds and/or of the recipient location as available (or weighted average if multiple). Regions are defined according to World Bank Group's categorization. **Notes:** (1) Asia analysis includes South Asia and East Asia & Pacific, (2) Africa and the Middle East analysis includes Middle East & North Africa Region and Sub-Saharan Africa region, (3) Latin America and the Caribbean analysis includes Latin America and the Caribbean.

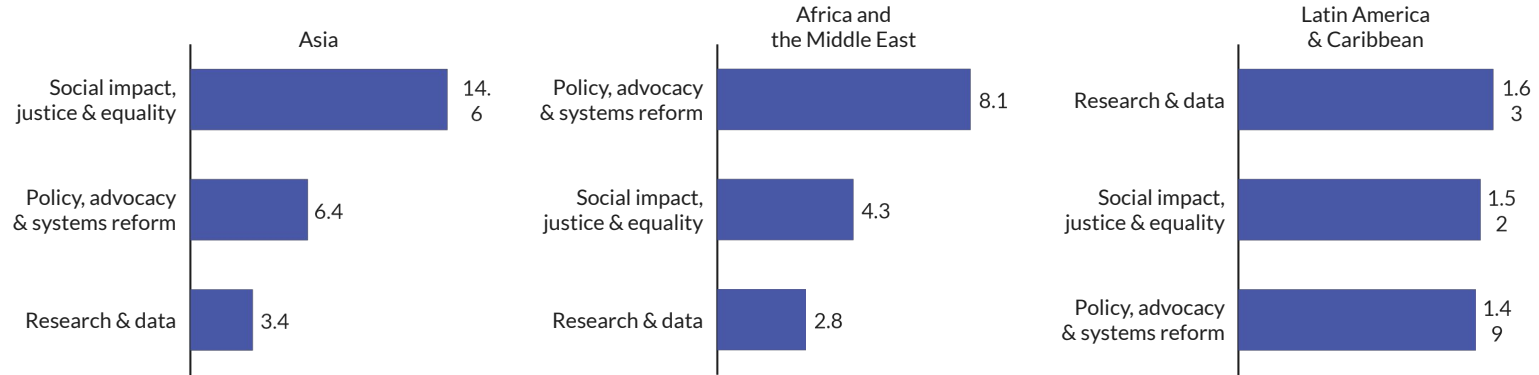
What does the climate x health funding landscape look like?

‘Social impact’, ‘policy & advocacy’ and ‘research & data’ were the top three CxH enablers funded across Asia, Africa and LAC

TOP 3 CxH ENABLERS ACROSS REGIONS

Amount funded by enabler

(USD \$m, philanthropic funding; 2016-19 total)



Funding for the ‘Community Engagement’ enabler received lower amounts of funding across all three regions

Source: OECD private philanthropic funding towards LMICs countries.

Source: Dalberg analysis of OECD philanthropic database (CxH grants from 2016 to 2019). Each grant is assigned the geography of the program it funds and/or of the recipient location as available (or weighted average if multiple). Regions are defined according to World Bank Group’s categorization. **Notes:** (1) Asia analysis includes South Asia and East Asia & Pacific, (2) Africa and the Middle East analysis includes Middle East & North Africa Region and Sub-Saharan Africa region, (3) Latin America and the Caribbean analysis includes Latin America and the Caribbean.

What does the climate x health funding landscape look like?

Large funders interested in CxH focus on a range of topics¹



Geographies: Global

CxH focus: Quantifying CxH effects, identifying health benefits of mitigation; evidencing health co-benefits in adaptation actions; creating global CxH community



The
**ROCKEFELLER
FOUNDATION**

Geographies: Africa, Asia, Latin America and the Caribbean

CxH focus: Pandemic prevention, early warning systems, hyperlocal networks, cross-sector innovation



**CHILDREN'S
INVESTMENT FUND
FOUNDATION**

Geographies: Africa, Asia (China, India and South East), Europe and Latin America (Brazil and Mexico)

CxH focus: Emissions reduction, air pollution, food systems

**BILL & MELINDA
GATES foundation**

Geographies: Global

CxH focus: Infectious & allergic diseases, physical & mental trauma, malnutrition & dehydration, land use & resource consumption, health security



Robert Wood Johnson
Foundation

Geographies: Mainly US with some global funding

CxH focus: Community driven adaptation, green space, environmental justice, health equity



Geographies: Global

CxH focus: Food safety, disease surveillance, energy



香港賽馬會慈善信託基金
The Hong Kong Jockey Club Charities Trust

Geographies: Hong Kong (SAR) and China

CxH focus: Carbon and waste reduction in and through the NGO sector; biochar production; epidemic preparedness

What has your experience of engaging with CxH funders been?

INTERACTIVE ACTIVITY: Plenary discussion



15 mins

What have your experiences been like engaging with CxH funders?

Have you faced any challenges in identifying or engaging with funders in the intersection of climate x health that are aligned with your work?

Give a “thumbs up” reaction in Zoom if yes.

If so, what are those challenges?

Unmute, or type your response in chat.

BREAK

03 Funder panel discussion

3 How do funders see their role in funding at the CxH nexus, and what can they learn from you?

Panel discussion and Q&A

Cohort #1 - Martin



55 mins



Irini Pantelidou

Wellcome Trust

As a Research Manager in Climate and Health, Irini leads on the development of funding calls and partnerships focused on adaptation, mitigation, capacity building, and field development



Martin Muchangi

Amref Health Africa

As Amref's Director for Population Health and Environment, Martin supports efforts to advance political commitments and cross-sectoral collaboration on climate change and health



Ben Carollo

The Rockefeller Foundation

As a Director at The Rockefeller Foundation, Ben supports efforts to unlock additional funding to adapt health systems to climate change and to improve country access to available funds

Funder panel discussion

3

How do funders see their role in funding at the CxH nexus, and what can they learn from you?

Panel discussion and Q&A

Cohort #2 - Maggie

55 mins

**Irini Pantelidou****Wellcome Trust**

As a Research Manager in Climate and Health, Irini leads the development of funding calls and partnerships focused on adaptation, mitigation, capacity building, and field development

**Maggie Rarieya****Amref Health Africa**

As Amref's Global Partnerships Director, Maggie supports collaborations with governments, private sector, and NGOs to confront the status quo and prepare health systems for future challenges

**Ben Carollo****The Rockefeller Foundation**

As a Director at The Rockefeller Foundation, Ben supports efforts to unlock additional funding to adapt health systems to climate change and to improve country access to available funds

We encourage you to keep the following set of ground rules in mind

Ground rules



Keep **video on**



Stay **muted** when not sharing



Encourage **contributions**



Own your own experience



All questions are welcome



Be physically and mentally **present**

Q&A with panelists

Raise your hand or share your questions in chat

04 Reflections

04

Share your reflections on this session

Reflections

P.26

INTERACTIVE ACTIVITY: Menti poll + discussion in plenary



5 mins

How has this session expanded your perspective on fundraising?

Share your reflections: was anything surprising, new or different? What has changed for you going forward?

To enter your response, go to Menti.com using the link shared in chat, or scan the QR code

