



Dear Colleagues,

Explore upcoming live events on community engagement, advancing health research in Africa, exploring congenital infections, and managing encephalitis.

Also, following the current Mpox outbreak in the Democratic Republic of the Congo, The Global Health Network has set up a new open knowledge-sharing community to support research teams and encourage local research to address the pressing gaps in evidence.

Here's all the latest from The Global Health Network.

Upcoming Events

Join a webinar on: **Harnessing Community Engagement for Public Health Research Success in East Africa**

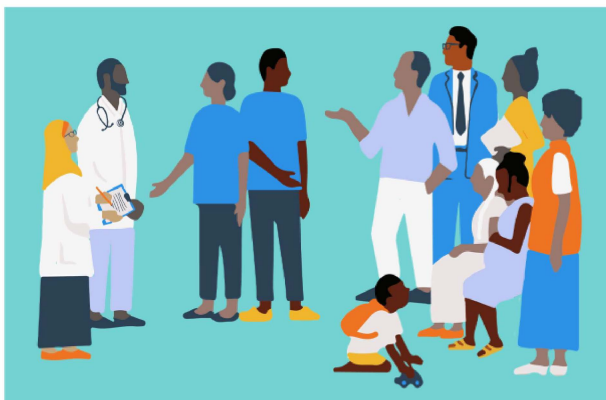
Wednesday 10 July 2024 | 12:00-13:30 UTC +1

Webinar: Harnessing Community Engagement for Public Health Research Success in East Africa

July 10, 2024 | 12:00 London / WAT | 13:00 CAT | 14:00 EAT



Register.



Chair

Sheikha Salum Mohamed, MBA, MPH

Speakers

Dr. Fredros Okumu

Ms. Naima Sykes

Ms. Noni Mumba

Dr. Prosper Chaki



Join insightful speakers on an interactive and insightful webinar which delves into the critical role of community engagement in global health research and its significant impact on public health in East Africa. Experienced practitioners explore practical strategies and the importance of involving communities in research initiatives to ensure relevance, sustainability, and ethical considerations. Learn how meaningful partnerships with

communities can lead to impactful research outcomes and influence public health policies and practices. Whether you're a researcher, healthcare professional, or community health worker, this webinar is designed for you.

Register for the webinar: Harnessing Community Engagement for Public Health Research Success in East Africa

Advancing Health Research for Indigenous Problem Solving in Africa: A Quest for the Missing Link

Tuesday 23 July 2024 | 11:00 UTC +1

To foster inclusive conversations and engage diverse groups and communities in health research and innovation, The Global Health Network Nigeria is hosting a webinar that brings together researchers, healthcare professionals, policymakers, and community members to discuss effective solutions to Africa's health challenges. Focusing on indigenous problem-solving approaches, the webinar will highlight culturally relevant research and address gaps in current health practices aiming to inspire new ideas and partnerships for sustainable health improvements across the continent.

Register for the webinar: Advancing Health Research for Indigenous Problem Solving in Africa: A Quest for the Missing Link

Congenital Infections: Epidemiology, Care and Prevention

Thursday 25 July 2024 | 13:00-16:00 UTC+1

Join the next webinar on Congenital Infections: Epidemiology, Care and Prevention, hosted by sub-Saharan African Congenital Anomalies Network (sSCAN). This initiative was established in 2021 with UKRI seed-funding to connect regional experts in the Congenital anomalies field, share best practice and build capacity. Register to learn more and contribute towards the control of congenital infections; this webinar includes specialist speakers from across the region.

Register for the webinar: Congenital Infections: Epidemiology, Care and Prevention

UK national guideline on management of encephalitis in adults and children: what have we learnt over the last decade?

Friday 26 July 2024 | 14:00 UTC +1

Encephalitis, an inflammation of the brain, can have potentially devastating consequences. One person is diagnosed with encephalitis every minute (Encephalitis International). When should you suspect encephalitis? What tests and investigations

should you request? How long should aciclovir be given in viral encephalitis? When should you escalate treatment therapy in autoimmune encephalitis? Please join the panel to learn about the latest guidelines on the management of encephalitis and advancements in the field over the last decade.

A certificate of attendance is issued for those that meet criteria, for more information visit: [Certificates of Attendance](#).

Register for the workshop: UK national guideline on management of encephalitis in adults and children: what have we learnt over the last decade?

The Nursing Research Club in Honduras and Argentina, an experience to tell Latin America about

Wednesday 31 July 2024 | 16:00-17:30 UTC +1

Language: Spanish

This webinar will present the learning outcomes in setting up a nursing research club in Honduras and Argentina by The Global Health Network Latin America and the Caribbean as part of capacity building efforts. Learn about the unique experiences from this region and highlights of the matters raised by students and nursing professionals within a teaching hospital setting. This webinar is organised by The Global Health Network, Hospital Escuela and Antonio Vidal Institute.

Register for the webinar: The Nursing Research Club in Honduras and Argentina, an experience to tell Latin America about

What is a Pathfinder Study? Tools and Benefits

Tuesday 6 August 2024 | 15:00 UTC +1

Languages: English, Portuguese and Spanish.

Introducing Pathfinder Studies, a concept designed to identify barriers within the health data research cycle and provide solutions that can be shared, used, and adapted by other health research teams to accelerate their own research. Join the webinar to learn how to identify key steps, track metrics, and share tools and solutions. Featuring practical examples from Fiocruz based in Brazil and the International Centre for Diarrhoeal Disease Research, Bangladesh (icddr,b).

Register for the webinar: What is a Pathfinder Study? Tools and Benefits

News

New Mpox resource on Global Outbreaks Research knowledge hub

Increasing concern is being raised in Africa on the escalating situation with the new clade 1b strain of Mpox. The outbreak has occurred in a highly vulnerable region, close to the Democratic Republic of the Congo (DRC) and Rwandan border.

The Global Health Network Rwanda is working closely with researchers in the DRC to understand transmission, severity of disease, longevity and to minimise the spread. However, more research is needed into this new strain.

There is a need for vaccine and treatment assessments, alongside better detection through community use diagnostics. It is also vital to understand community perception and behaviours so that effective public health campaigns can be designed to increase access to care and to slow transmission.

Discover the latest updates and access resources to support your research on Mpox

Invitation to join the 1000 Challenge Ghana community

Are you a nurse, midwife, community health worker, or allied health professional in Ghana? Would you like to connect, collaborate, and share knowledge with your colleagues or peers?

Join the 1000 Challenge Ghana community

Use the new Mesh Community Engagement Strategy planning tool for writing a funding application

A Practical Guide to Planning an Engagement Strategy for your Global Health Research funding application is a new tool to help researchers and engagement practitioners to plan a community engagement strategy for health research. This practical guideline will help you to plan:

- Who to engage with?
- How to engage?
- Engagement to feed into funding proposals.
- Engagement from planning, implementing and disseminating research.

Download the Guide: A Practical Guide to Planning an Engagement Strategy for your Global Health Research funding application

The Global Health Training Centre

Discover free eLearning courses in global health research for staff of all roles, in all regions and covering all disease areas, developed by The Global Health Network in

collaboration with several partners. Explore courses: [eLearning Courses](#)

Catch up on or join the latest workshops and webinars on global health research, spanning research disciplines, regions, and therapeutic areas, aiming to foster collaboration, facilitate discussion, and celebrate advances and achievements towards faster and better research for health: [Webinars & Workshops](#)

Your help in Supporting The Global Health Network

The Global Health Network is busy delivering skills and knowledge across the globe, supporting research to happen in places and communities where evidence is needed to change outcomes in the most devastating diseases. Access to all this is free, and always will be, whether an online course or a research support clinic in a hospital.

Over the past 15 years all this has enabled many thousands of frontline health workers and research teams to undertake quality research that otherwise would have been out of reach. This community has responded to outbreaks such as Ebola, Zika, COVID and now Mpox, whilst also working every day to tackle the ongoing toll from diseases of poverty that blight communities.

Have you attended a webinar or taken a course? Have you recommended any of the tools and resources to your team or collaborators? Many thousands of people have. This is wonderful and together we are a proud community, working to share quality know-how across disease areas and between types of research and different teams. All aiming to enable equity in access to undertaking and benefiting from research.

If you know how valuable The Global Health Network is, please can you help us to keep this facility being the unique and remarkable source of support and access to information that it is? Can you make a donation?

Or, do you work for an organisation that benefits from this and could also afford to help support this provision? Please can you pass this to the head of training, research or capacity building and explain the value of The Global Health Network to your work and suggest that it would be appropriate, and a good thing, for your organisation to contribute, not just because of the benefits that being able to access The Global Health Network delivers to your research, but also because their contribution would support access for other organisations and teams who cannot afford to access such training and resources by any other means.

[Donate](#)

The Global Health Network, Ewert House, Ewert Place, Summertown, Oxford, OX2
7SG, United Kingdom