

WEBINAR

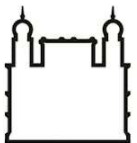
Simultaneous translation
into Spanish & Portuguese



Using interdisciplinary data and concepts in research: *The Trajetórias Project*

26th Oct 2023, 13:00 UK | 9:00 BR

REGISTER



Ministério da Saúde

FIUCRUZ
Fundação Oswaldo Cruz



WEBINAR

Using interdisciplinary data and concepts in research: *The Trajetórias Project*

26th Oct 2023, 13:00 UK | 9:00 BR

Simultaneous translation
into Spanish & Portuguese



Chair: Rachel Lowe - Catalan Institution for Research and Advanced Studies (ICREA) Research Professor and Global Health Resilience Group Leader, Barcelona Supercomputing Center (BSC), Spain

Claudia Codeço - Senior Researcher in Public Health, Oswaldo Cruz Foundation (Fiocruz), Brazil

Raquel Martins Lana - Postdoctoral Researcher, Global Health Resilience Group, Barcelona Supercomputing Centre (BSC), Spain

Ana Rorato - Postdoctoral researcher, National Institute for Space Research (INPE), Brazil

Ana Paula Dal'Asta - Postdoctoral researcher, National Institute for Space Research (INPE), Brazil



Panel

Chair: Rachel Lowe - Catalan Institution for Research and Advanced Studies (ICREA) Research Professor and Global Health Resilience Group Leader, Barcelona Supercomputing Centre (BSC), Spain

Claudia Codeço - Senior Researcher in Public Health, Oswaldo Cruz Foundation (Fiocruz, Rio de Janeiro), Brazil

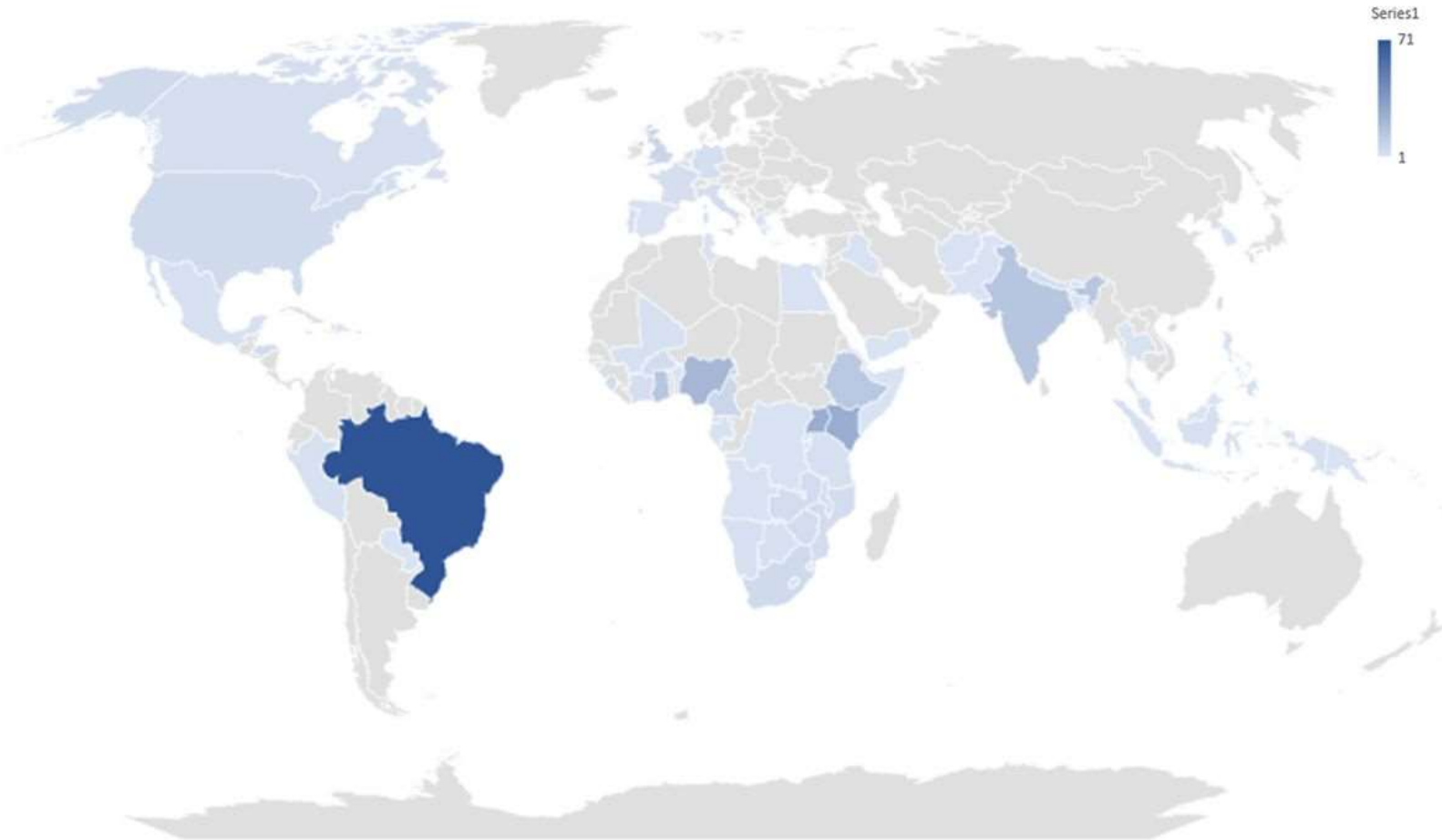
Raquel Martins Lana - Postdoctoral Researcher, Global Health Resilience Group, Barcelona Supercomputing Centre (BSC), Spain

Ana Rorato - Postdoctoral Researcher, National Institute for Space Research (INPE), Brazil

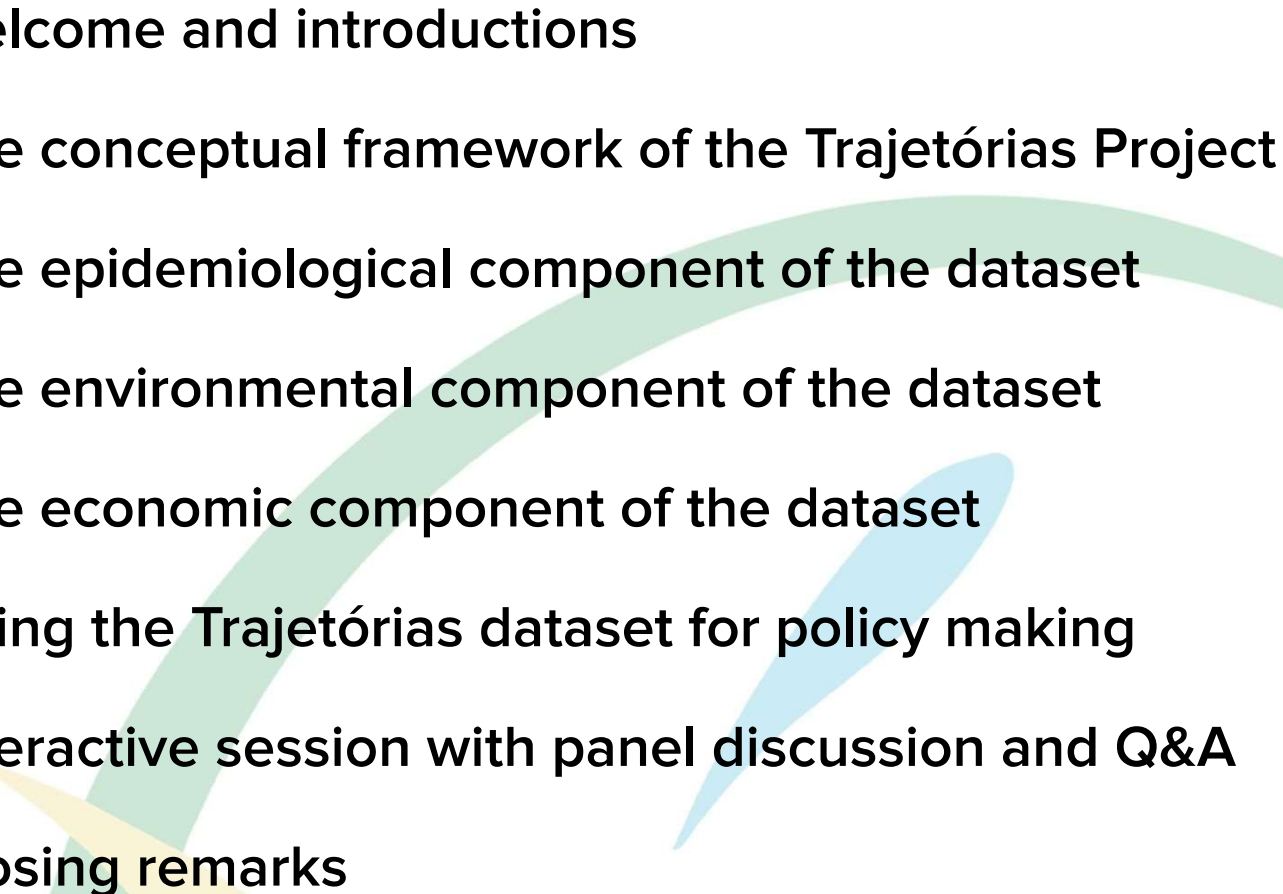
Ana Paula Dal'Asta - Postdoctoral Researcher, National Institute for Space Research (INPE), Brazil

Joining us today

1	Country	Count
2	Brazil	71
3	Uganda	27
4	Kenya	27
5	Nigeria	22
6	Ghana	15
7	India	15
8	Ethiopia	14
9	United Kir	8
10	Cameroon	7
11	South Africa	5
12	United States	5
13	Honduras	4
14	Rwanda	4
15	Burkina Faso	4
16	Zimbabwe	4
17	Sierra Leone	4
18	Mozambique	4
19	Nepal	4
20	Zambia	4
21	Congo, Dem.	3
22	Germany	3
23	France	3
24	Portugal	3
25	Côte d'Ivoire	3
26	Canada	3
27	Italy	3
28	Malawi	3
29	Philippines	2
30	Mali	2
31	Tanzania	2
32	Botswana	2
33	Peru	2
34	Namibia	2
35	Mexico	2
36	Indonesia	2
37	Lesotho	2
38	Afghanistan	1
39	Yemen	1
40	Tunisia	1

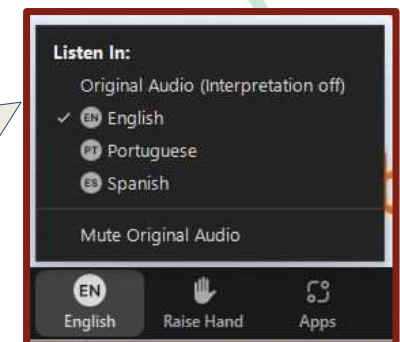


Agenda

- Welcome and introductions
 - The conceptual framework of the Trajetórias Project
 - The epidemiological component of the dataset
 - The environmental component of the dataset
 - The economic component of the dataset
 - Using the Trajetórias dataset for policy making
 - Interactive session with panel discussion and Q&A
 - Closing remarks
- 

Housekeeping

- This webinar is being recorded and will be shared on The Global Health Network platform - Fiocruz and Latin America and the Caribbean hubs.
- Due to the number of participants your camera and microphone are disabled.
- This webinar will be held in Portuguese and simultaneous translation will be provided into both English and Spanish.
- Navigate to the toolbar, click on **Language Interpretation** and select your desired language input.



Housekeeping

- Please use the *Chat feature* for any technical issues.
- Please use the *Q&A feature* to post your questions. You can post anonymously.
- We have dedicated time allocated for Q&A so we'll try to get through as many questions as possible.



The environmental component of the Trajetórias dataset

Dr. Ana Claudia Rorato Vitor

Postdoctoral researcher

National Institute for Space Research (INPE), Brazil

Indicators

Subdimension	Indicator	Unity	Timeframe	ID
Habitat loss	Deforestation	km ² /km ²	[t1, t2] = [2000, 2006] or [2010, 2016]	deorg
Habitat loss	Deforestation	km ² /km ²	[t1, t2] = [2000, 2006] or [2010, 2016]	defor
Habitat loss	Forest degradation	km ² /km ²	[t1, t2] = [2007, 2017]	dgorg
Habitat loss	Forest degradation	km ² /km ²	[t1, t2] = [2007, 2017]	dgfor
Habitat loss	Fire	km ² /km ²	[t1, t2] = [2001, 2006] or [2012, 2017]	fire
Habitat loss	Vegetation fragmentation (core)	km ² /km ²	t = 2006 or 2017	core
Habitat loss	Vegetation fragmentation (edge)	m/m ²	t = 2006 or 2017	edge
Land Use and Land Cover	Remnant forest	km ² /km ²	t = 2007 or 2017	refor
Land Use and Land Cover	Secondary vegetation	km ² /km ²	t = 2006 or 2017	secveg
Land Use and Land Cover	Pasture	km ² /km ²	t = 2006 or 2017	pasture
Land Use and Land Cover	Crop	km ² /km ²	t = 2006 or 2017	crop
Land Use and Land Cover	Mining	km ² /km ²	t = 2006 or 2017	mining
Land Use and Land Cover	Urban area	km ² /km ²	t = 2006 or 2017	urban
Transportation networks	Roads network	m/m ²	t = 2010 or 2017	roads
Transportation networks	Waterways network	m/m ²	2010	river
Transportation networks	Ports	count	2017	port
Climatic anomalies	Positive precipitation	m ² /m ²	[t1, t2] = [1996, 2006] or [2007, 2017]	precp
Climatic anomalies	Negative precipitation	m ² /m ²	[t1, t2] = [1996, 2006] or [2007, 2017]	precn
Climatic anomalies	Positive temperature	m ² /m ²	[t1, t2] = [1996, 2006] or [2007, 2017]	temp

Table 1. Description of the environmental indicators in the Trajetorias dataset.



MODIS Global Burned Area Product (Collection 6)

Indicators

Subdimension	Indicator	Unity	Timeframe	ID
Habitat loss	Deforestation	km ² /km ²	[t1, t2] = [2000, 2006] or [2010, 2016]	deorg
Habitat loss	Deforestation	km ² /km ²	[t1, t2] = [2000, 2006] or [2010, 2016]	defor
Habitat loss	Forest degradation	km ² /km ²	[t1, t2] = [2007, 2017]	dgorg
Habitat loss	Forest degradation	km ² /km ²	[t1, t2] = [2007, 2017]	dgfor
Habitat loss	Fire	km ² /km ²	[t1, t2] = [2001, 2006] or [2012, 2017]	fire
Habitat loss	Vegetation fragmentation (core)	km ² /km ²	t = 2006 or 2017	core
Habitat loss	Vegetation fragmentation (edge)	m/m ²	t = 2006 or 2017	edge
Land Use and Land Cover	Remnant forest	km ² /km ²	t = 2007 or 2017	refor
Land Use and Land Cover	Secondary vegetation	km ² /km ²	t = 2006 or 2017	secveg
Land Use and Land Cover	Pasture	km ² /km ²	t = 2006 or 2017	pasture
Land Use and Land Cover	Crop	km ² /km ²	t = 2006 or 2017	crop
Land Use and Land Cover	Mining	km ² /km ²	t = 2006 or 2017	mining
Land Use and Land Cover	Urban area	km ² /km ²	t = 2006 or 2017	urban
Transportation networks	Roads network	m/m ²	t = 2010 or 2017	roads
Transportation networks	Waterways network	m/m ²	2010	river
Transportation networks	Ports	count	2017	port
Climatic anomalies	Positive precipitation	m ² /m ²	[t1, t2] = [1996, 2006] or [2007, 2017]	precp
Climatic anomalies	Negative precipitation	m ² /m ²	[t1, t2] = [1996, 2006] or [2007, 2017]	precn
Climatic anomalies	Positive temperature	m ² /m ²	[t1, t2] = [1996, 2006] or [2007, 2017]	temp

Table 1. Description of the environmental indicators in the Trajetorias dataset.



MODIS Global Burned Area Product (Collection 6)

Indicators

Subdimension	Indicator	Unity	Timeframe	ID
Habitat loss	Deforestation	km ² /km ²	[t1, t2] = [2000, 2006] or [2010, 2016]	deorg
Habitat loss	Deforestation	km ² /km ²	[t1, t2] = [2000, 2006] or [2010, 2016]	defor
Habitat loss	Forest degradation	km ² /km ²	[t1, t2] = [2007, 2017]	dgorg
Habitat loss	Forest degradation	km ² /km ²	[t1, t2] = [2007, 2017]	dgfor
Habitat loss	Fire	km ² /km ²	[t1, t2] = [2001, 2006] or [2012, 2017]	fire
Habitat loss	Vegetation fragmentation (core)	km ² /km ²	t = 2006 or 2017	core
Habitat loss	Vegetation fragmentation (edge)	m/m ²	t = 2006 or 2017	edge
Land Use and Land Cover	Remnant forest	km ² /km ²	t = 2007 or 2017	refor
Land Use and Land Cover	Secondary vegetation	km ² /km ²	t = 2006 or 2017	secveg
Land Use and Land Cover	Pasture	km ² /km ²	t = 2006 or 2017	pasture
Land Use and Land Cover	Crop	km ² /km ²	t = 2006 or 2017	crop
Land Use and Land Cover	Mining	km ² /km ²	t = 2006 or 2017	mining
Land Use and Land Cover	Urban area	km ² /km ²	t = 2006 or 2017	urban
Transportation networks	Roads network	m/m ²	t = 2010 or 2017	roads
Transportation networks	Waterways network	m/m ²	2010	river
Transportation networks	Ports	count	2017	port
Climatic anomalies	Positive precipitation	m ² /m ²	[t1, t2] = [1996, 2006] or [2007, 2017]	precp
Climatic anomalies	Negative precipitation	m ² /m ²	[t1, t2] = [1996, 2006] or [2007, 2017]	precn
Climatic anomalies	Positive temperature	m ² /m ²	[t1, t2] = [1996, 2006] or [2007, 2017]	temp

Table 1. Description of the environmental indicators in the Trajetorias dataset.



MODIS Global Burned Area Product (Collection 6)

Indicators

Subdimension	Indicator	Unity	Timeframe	ID
Habitat loss	Deforestation	km ² /km ²	[t1, t2] = [2000, 2006] or [2010, 2016]	deorg
Habitat loss	Deforestation	km ² /km ²	[t1, t2] = [2000, 2006] or [2010, 2016]	defor
Habitat loss	Forest degradation	km ² /km ²	[t1, t2] = [2007, 2017]	dgorg
Habitat loss	Forest degradation	km ² /km ²	[t1, t2] = [2007, 2017]	dgfor
Habitat loss	Fire	km ² /km ²	[t1, t2] = [2001, 2006] or [2012, 2017]	fire
Habitat loss	Vegetation fragmentation (core)	km ² /km ²	t = 2006 or 2017	core
Habitat loss	Vegetation fragmentation (edge)	m/m ²	t = 2006 or 2017	edge
Land Use and Land Cover	Remnant forest	km ² /km ²	t = 2007 or 2017	refor
Land Use and Land Cover	Secondary vegetation	km ² /km ²	t = 2006 or 2017	secveg
Land Use and Land Cover	Pasture	km ² /km ²	t = 2006 or 2017	pasture
Land Use and Land Cover	Crop	km ² /km ²	t = 2006 or 2017	crop
Land Use and Land Cover	Mining	km ² /km ²	t = 2006 or 2017	mining
Land Use and Land Cover	Urban area	km ² /km ²	t = 2006 or 2017	urban
Transportation networks	Roads network	m/m ²	t = 2010 or 2017	roads
Transportation networks	Waterways network	m/m ²	2010	river
Transportation networks	Ports	count	2017	port
Climatic anomalies	Positive precipitation	m ² /m ²	[t1, t2] = [1996, 2006] or [2007, 2017]	precp
Climatic anomalies	Negative precipitation	m ² /m ²	[t1, t2] = [1996, 2006] or [2007, 2017]	precn
Climatic anomalies	Positive temperature	m ² /m ²	[t1, t2] = [1996, 2006] or [2007, 2017]	temp

Table 1. Description of the environmental indicators in the Trajetorias dataset.

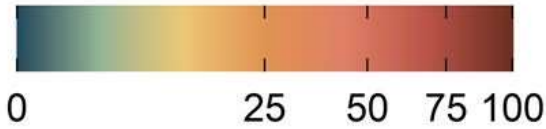
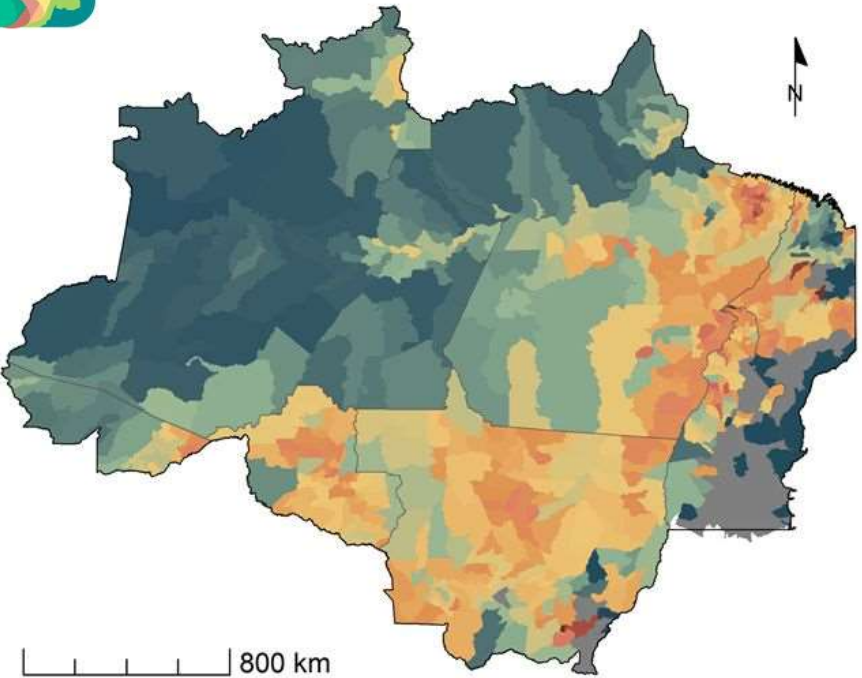


MODIS Global Burned Area Product (Collection 6)

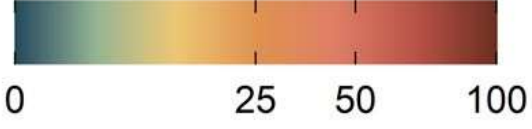
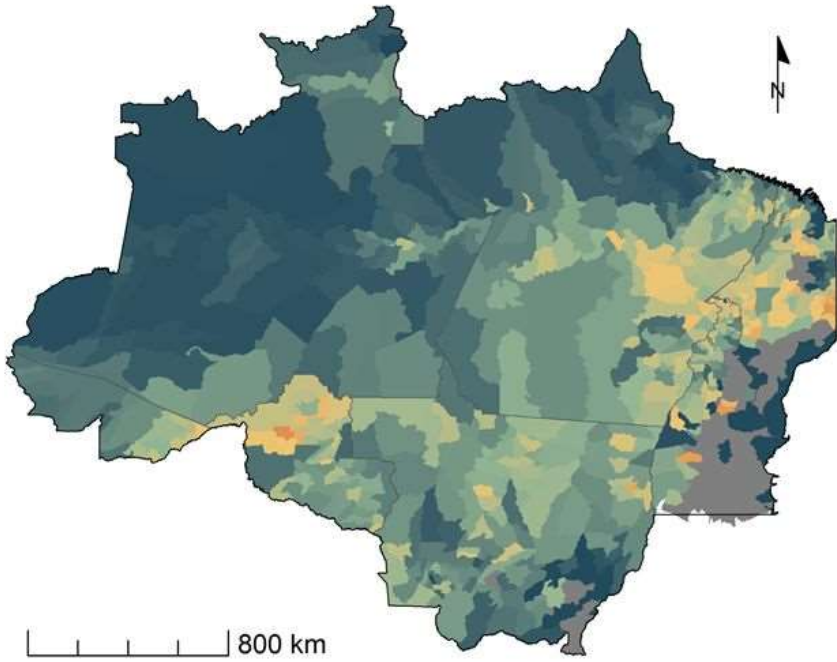
Habitat loss



Percentage of accumulated clear-cut deforestation area



2000-2006

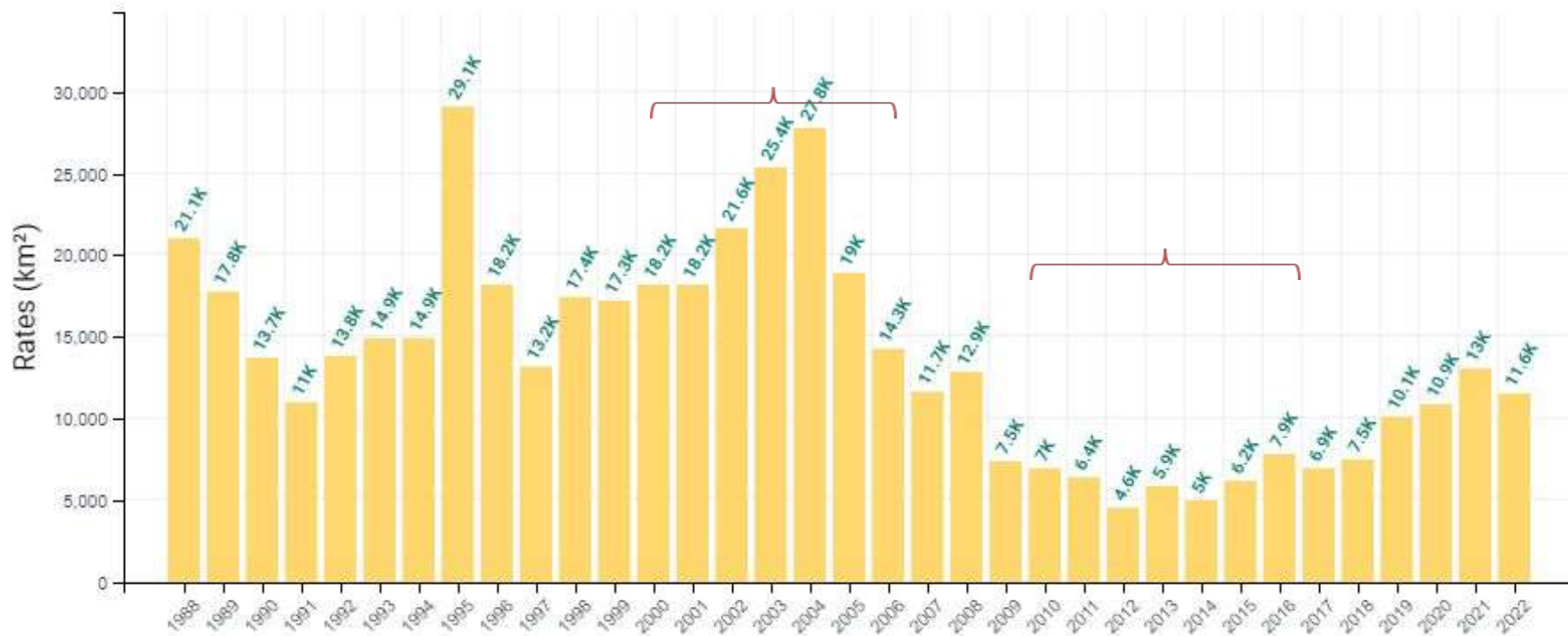


2010-2016

Habitat loss

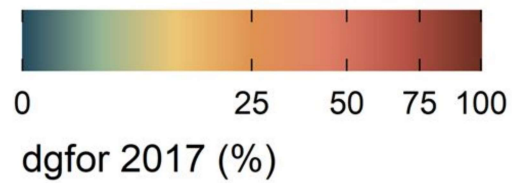
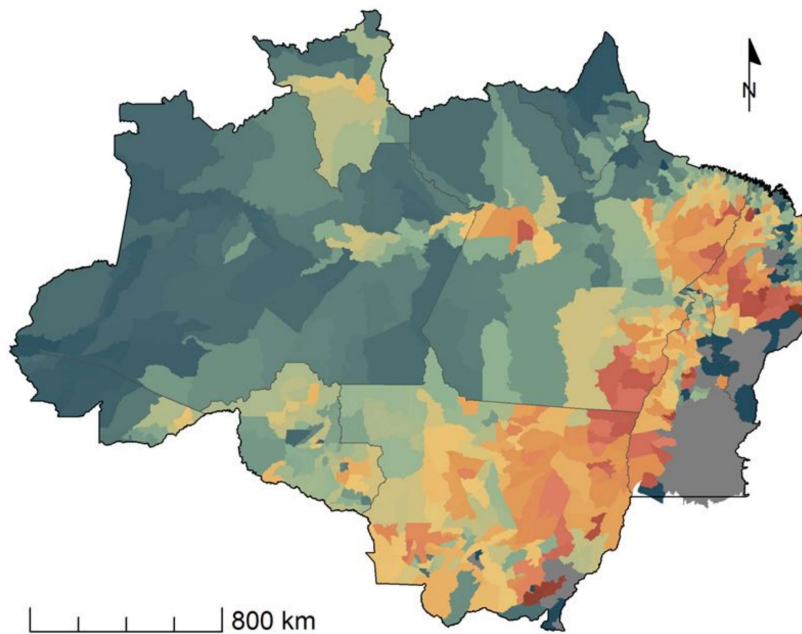
Annual rates of accumulated clear-cut deforestation area

Deforestation rates - Legal Amazon - States

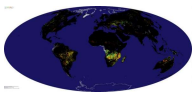
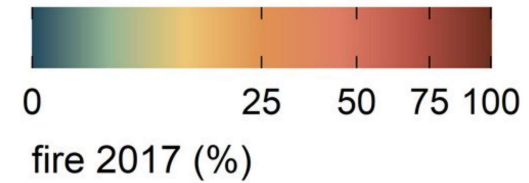
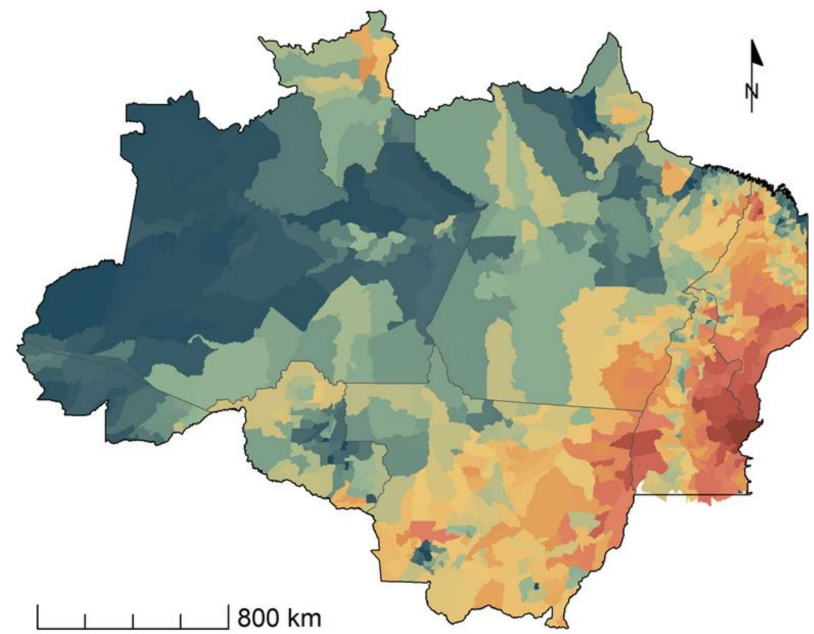


Habitat loss

Percentage of forest degradation area by 2017



Percentage of burned area accumulated until 2017

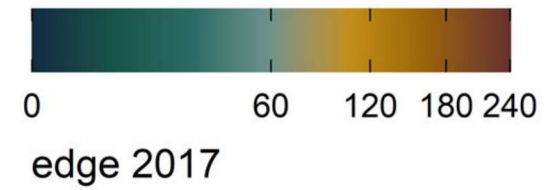
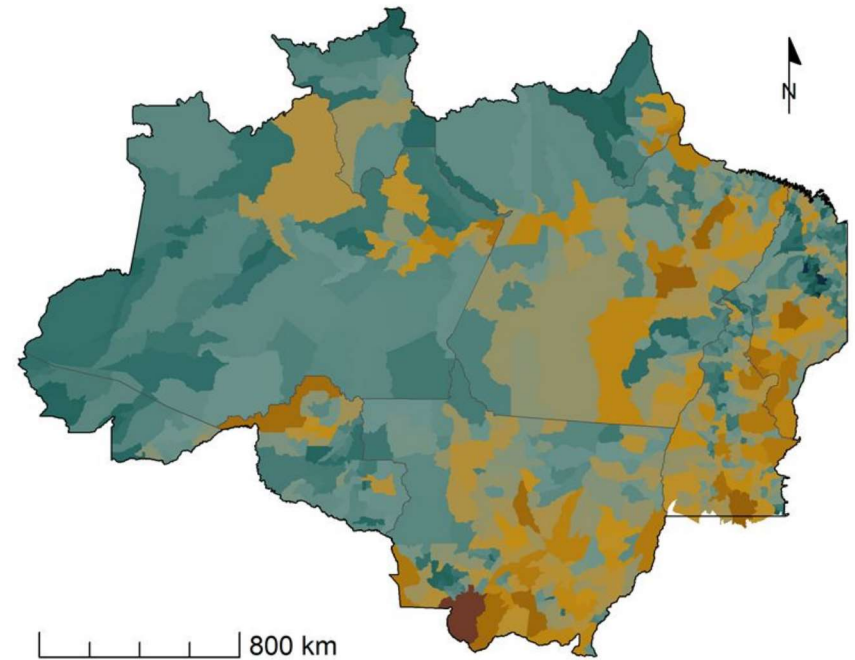
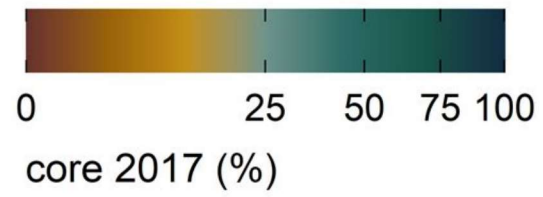
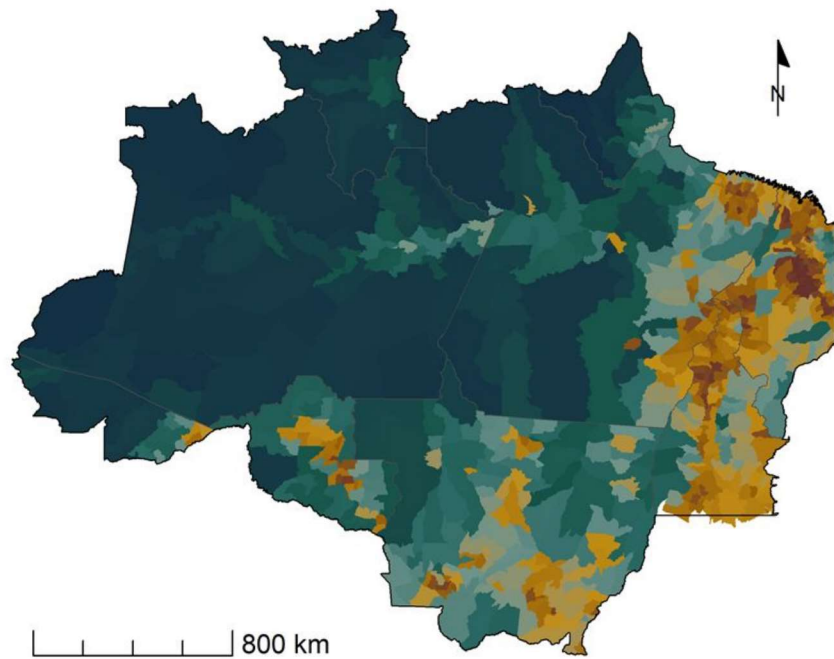


MODIS' Global
Burned Area
Product (Collection
6)



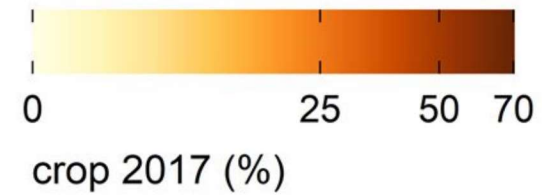
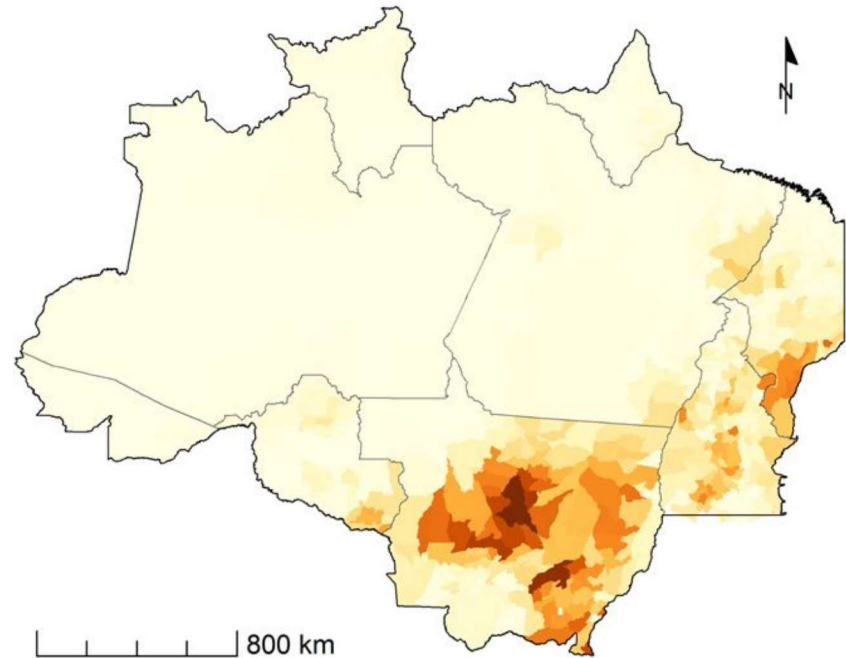
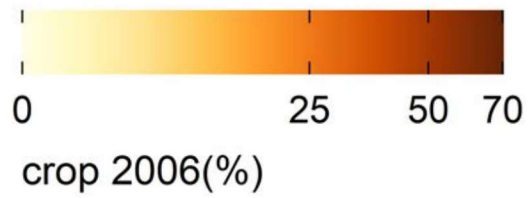
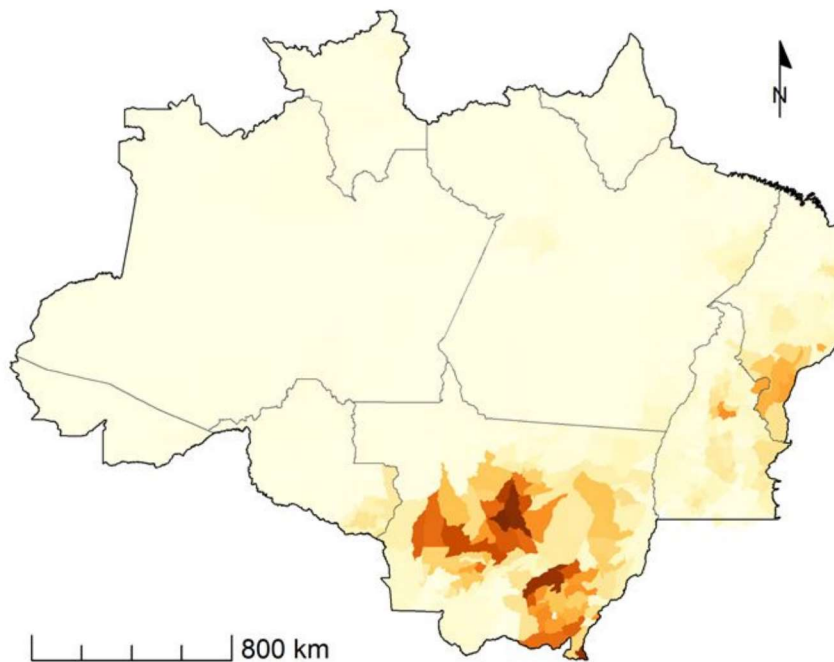
Habitat loss

Forest fragmentation indicators



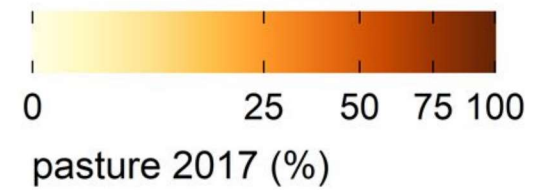
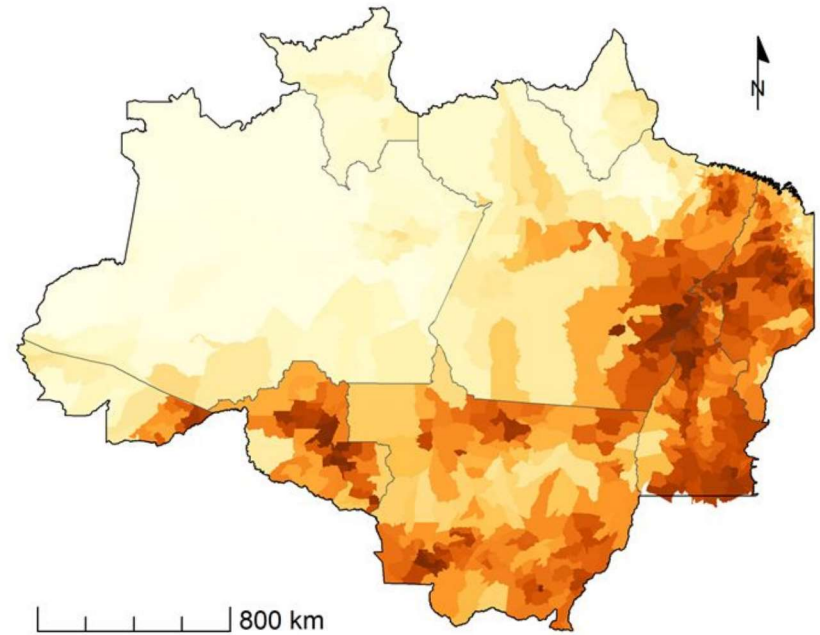
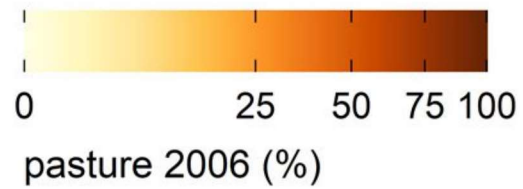
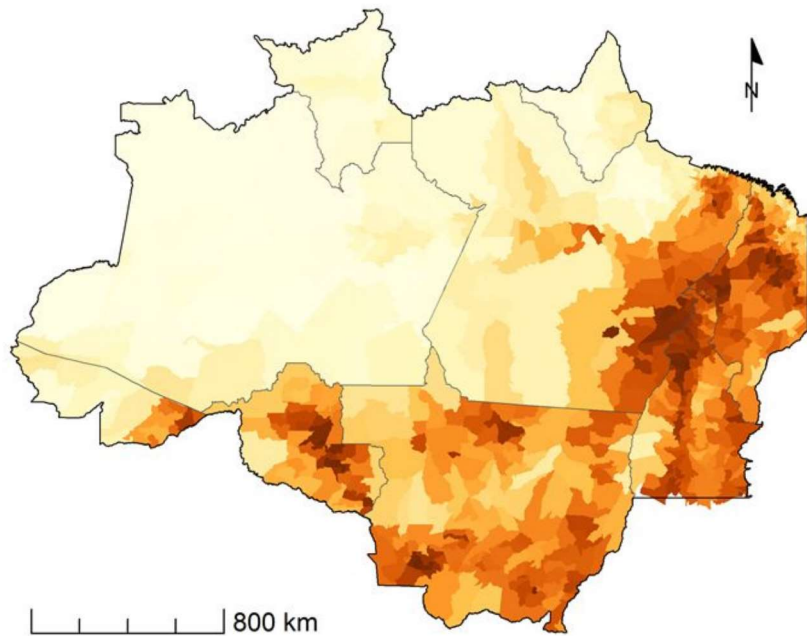
Land Use and Land Cover

Percentage of cultivated areas in 2006 and 2017



Land Use and Land Cover

Percentage of pasture areas in 2006 and 2017

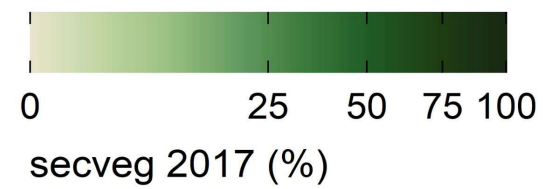
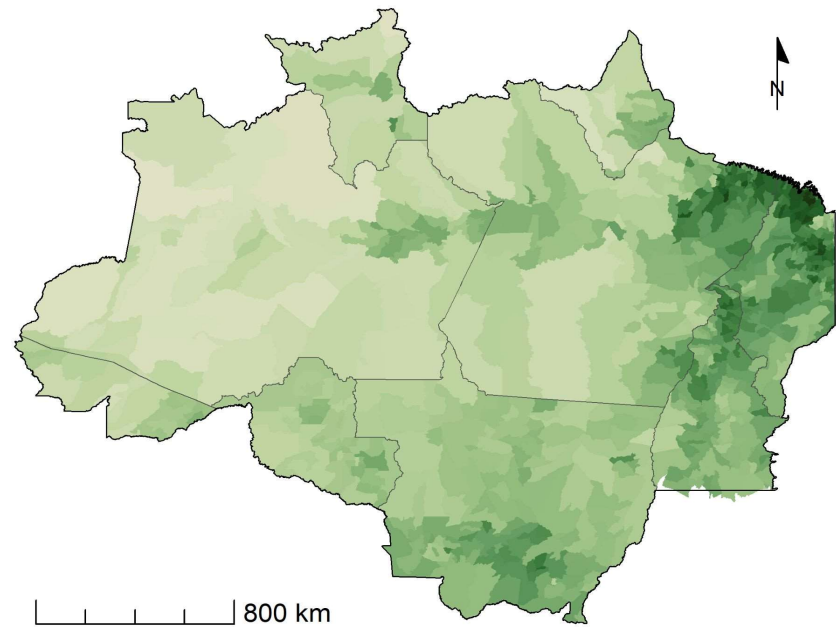
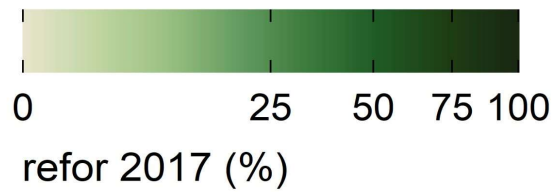
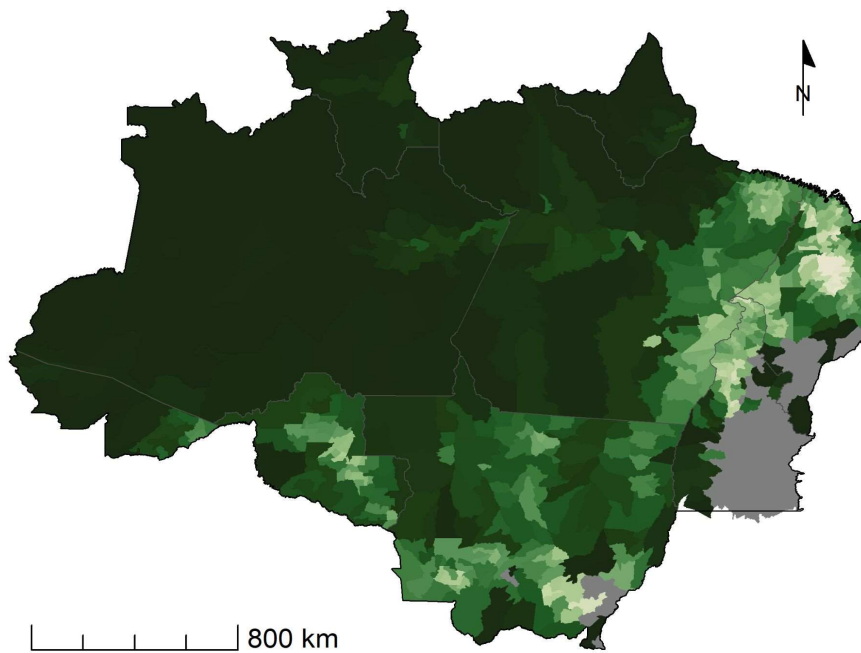


Vegetation cover



Percentage of remaining forest and secondary vegetation by 2017

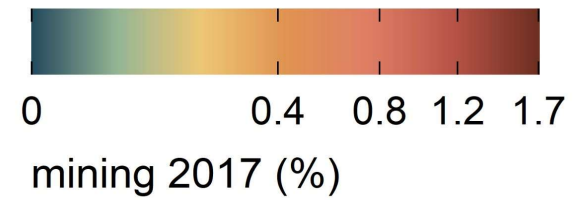
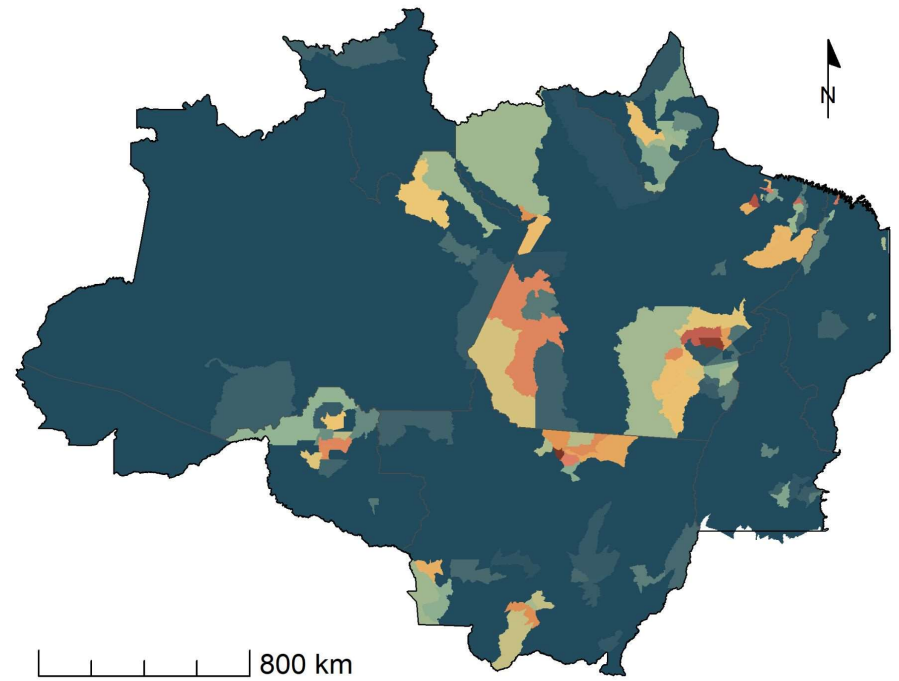
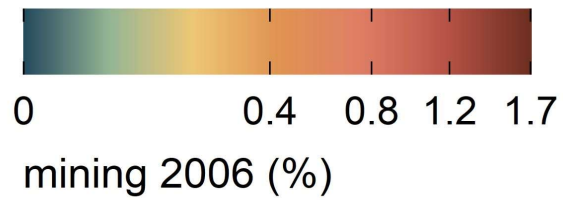
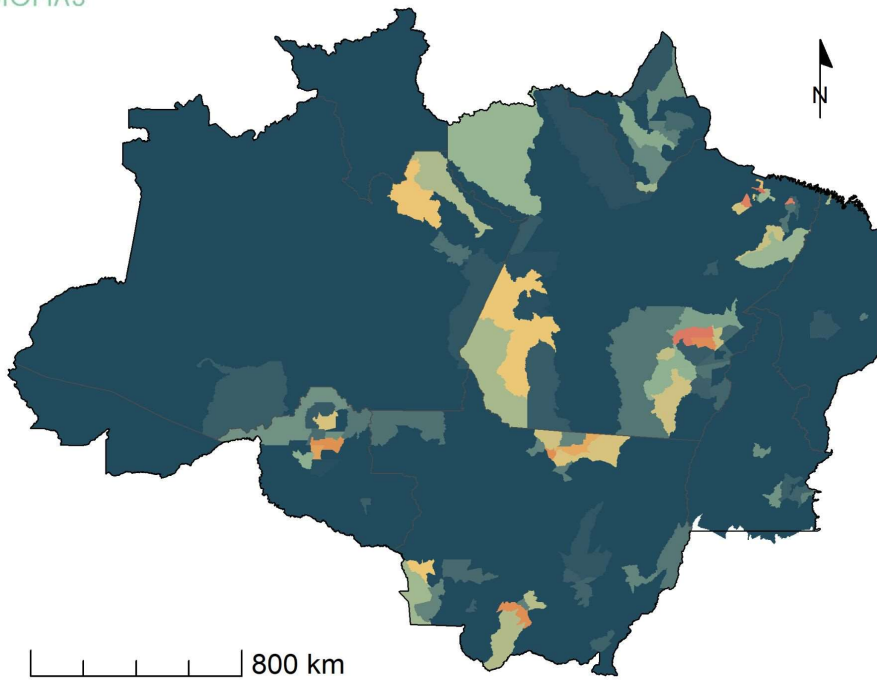
Camara et al., 2020



Advancement of mining activities

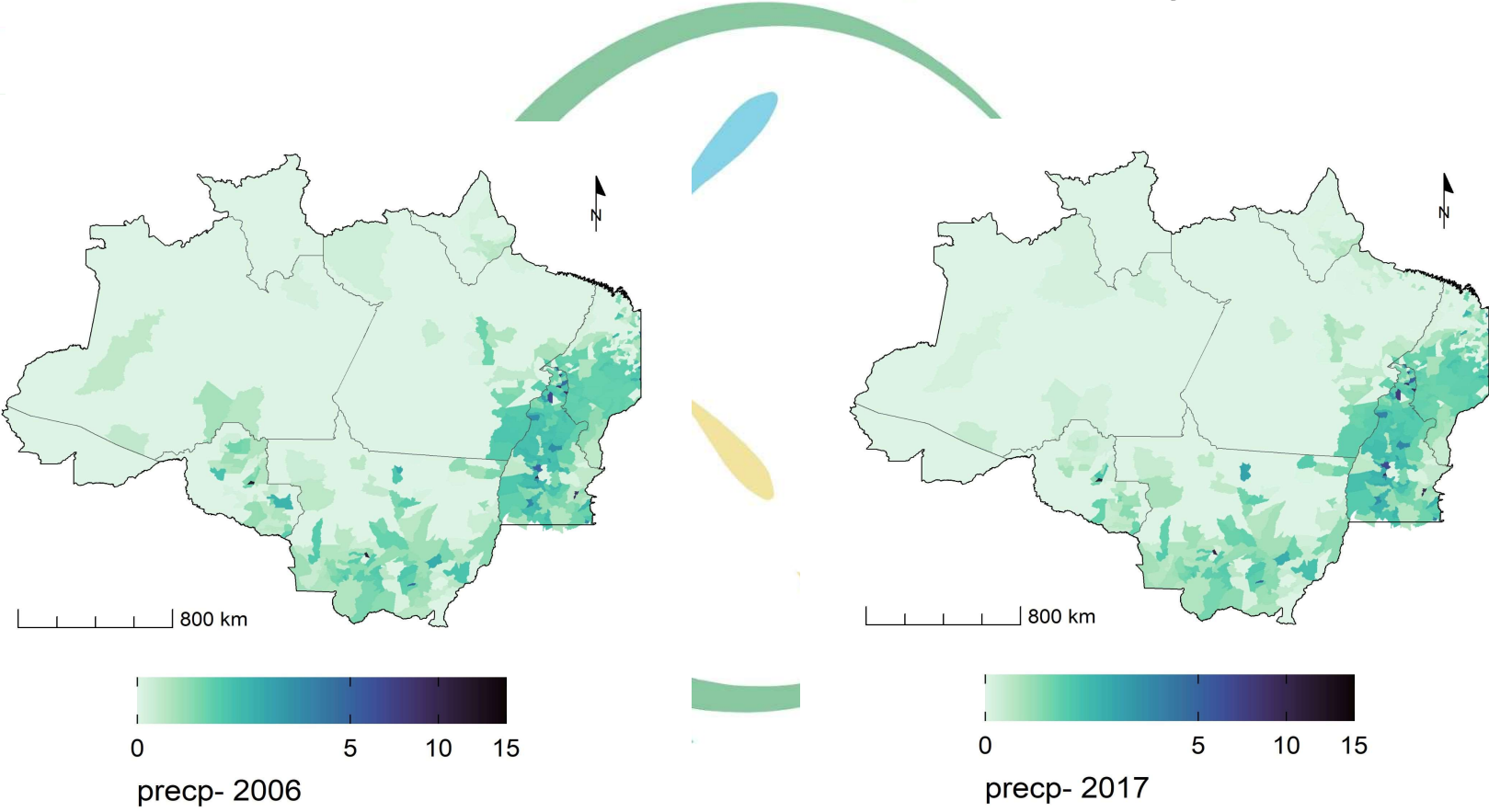


Percentage of mining areas until 2006 and 2017 (industrial and artisanal - 'garimpo')



Detection of areas with negative precipitation anomalies

The climatological normal was calculated from the 30-year climatological average of each municipality using time series from 1961 to 1990. In these municipalities the precipitation observed in the ten-year period was significantly lower than the historical average.

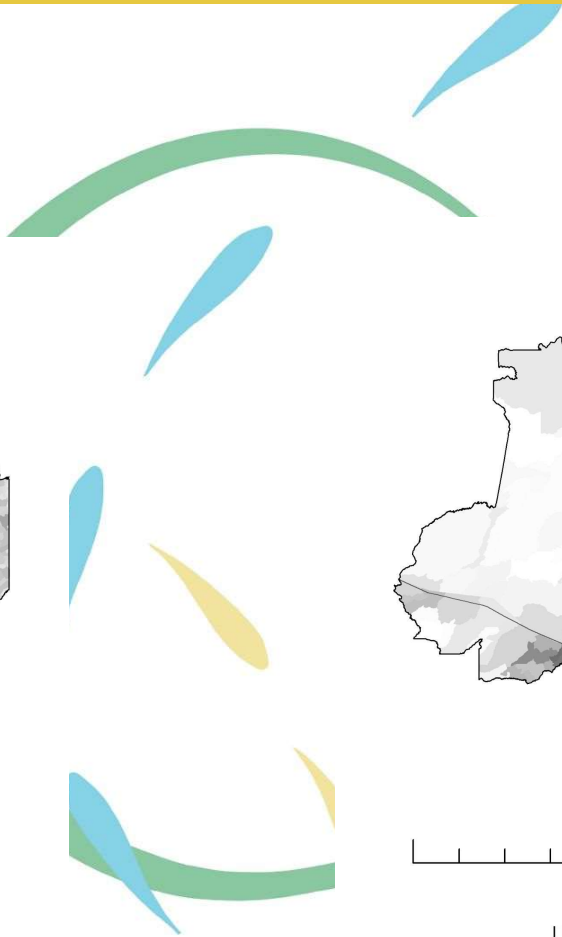
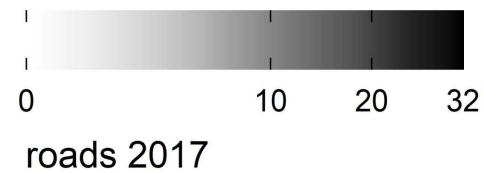
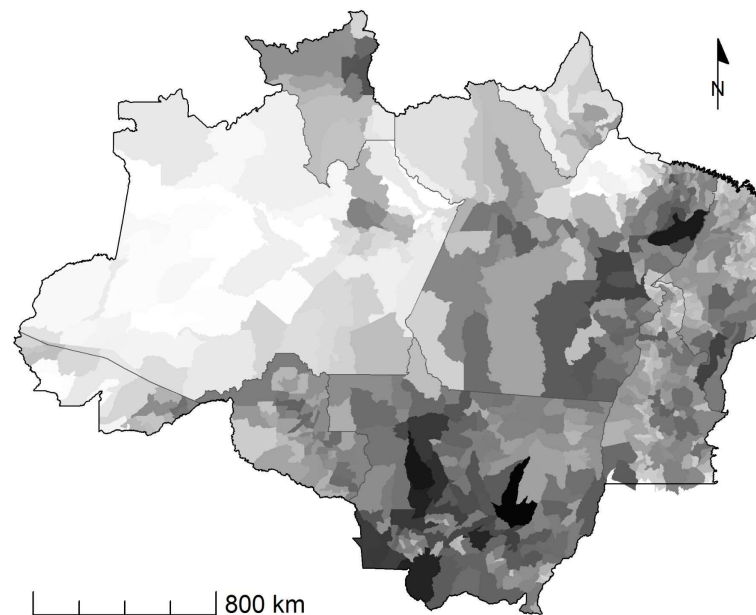
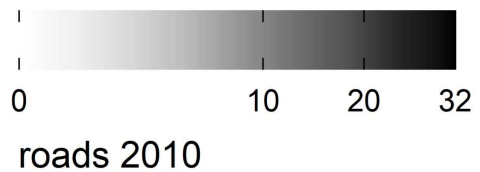
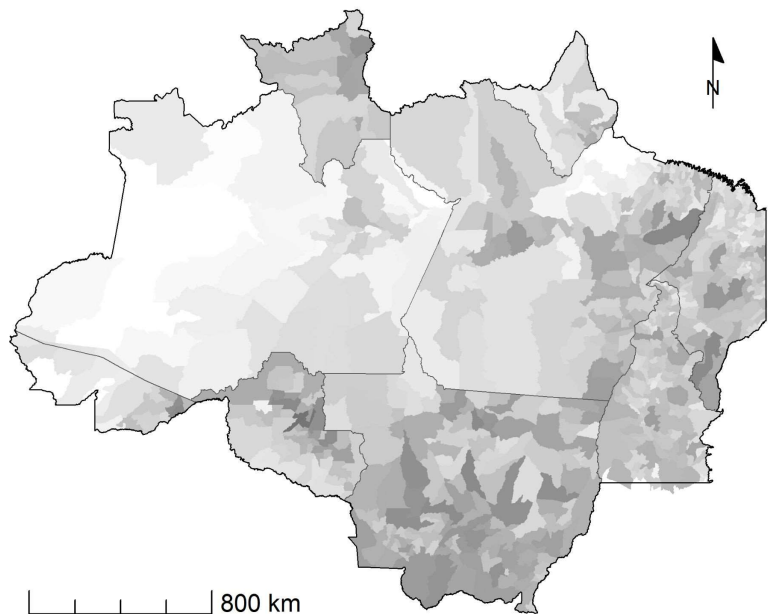


1996-2006

2007-2017

Increase in the road network over the two periods

Density of roads



Resources

Access the article

Rorato et al., 2023. Trajetórias: a dataset of environmental, epidemiological, and economic indicators for the Brazilian Amazon. *Sci Data* 10, 65 (2023).

<https://www.nature.com/articles/s41597-023-01962-1>

Trajetórias Dashboard:

<https://trajetorias.shinyapps.io/trajetorias/>



Resources

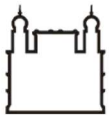
The recording, materials, presentations and resources will be shared on the **Fiocruz** and **Latin America and the Caribbean** knowledge hubs:

<https://fiocruz.tghn.org/> and <https://lac.tghn.org/>



<http://bit.ly/trajetoriasfiocruz>

Thank you.



Ministério da Saúde

FIOCRUZ
Fundação Oswaldo Cruz

