

WEBINAR

REGISTER

The Global Health Network Nigeria Country Centre launch event: *Strengthening Nigeria's research capacity development*

24th Jan 2024 - 12:00 WAT / 11:00 GMT



**THE
GLOBAL
HEALTH
NETWORK
AFRICA**

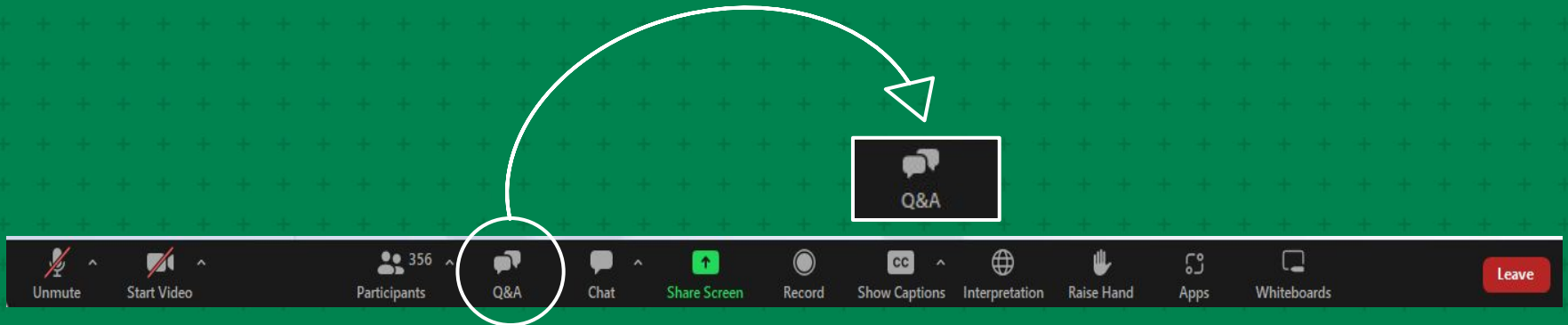


The Global Health Network Nigeria Country Centre is hosted by the Obafemi Awolowo University, Nigeria in collaboration with The Global Health Network, University of Oxford.

**THE
GLOBAL
HEALTH
NETWORK**
Enabling research by sharing knowledge

Housekeeping

- This webinar is being recorded and will be shared on The Global Health Network.
- Due to the number of participants your camera and microphone are disabled.
- Please use the *Chat feature* for introductions and to report any technical issues.
- Please use the *Q&A feature* to post your questions. You can post anonymously.
- We will try to get through as many as possible during the course of the webinar.



Panel

- **Chair: Godwin Pius Ohemu** - Hub/Media Coordinator, The Global Health Network Nigeria Country Centre (TGHN Ng)
- **Prof Akanni Akinyemi** - Deputy Vice-Chancellor Research Innovation and Development, Obafemi Awolowo University, Ile-Ife, Nigeria
- **Dr Ola Ibigbami** - Coordinator, TGHN Ng; Senior Lecturer, Department of Mental Health, College of Health Sciences, Obafemi Awolowo University, Ile-Ife, Nigeria
- **Goodness Odey** - Partnership & Advocacy Coordinator, TGHN Ng
- **Prof Babatope Kolawole** - Provost, College of Health Sciences, OAU, Ile-Ife, Nigeria
- **Professor Trudie Lang** - Professor of Global Health Research; Director of The Global Health Network (TGHN), University of Oxford
- **Christine Kirima** - African Regional Coordinator, The Global Health Network

Agenda

- **Welcome address**
- **Deputy Vice-Chancellor Research Innovation and Development**
- **Introducing The Global Health Network (TGHN)**
- **The Global Health Network, Nigeria Country Centre (TGHN-Ng)**
- **Keynote address: TGHN Opportunities for Early Career Researchers in Nigeria and Beyond; 2024-2025**
- **Unveiling of Mentors**
- **Good will messages**
- **Vote of thanks**

Joining us today

Country	Count	Total
Nigeria	296	444
United Kingdom	14	
United States	12	
Ghana	9	
India	9	
Kenya	8	
Uganda	7	
Ethiopia	7	
South Africa	6	
Spain	4	
Canada	3	
Benin	3	
Bangladesh	3	
Mexico	3	
Cameroon	3	
Zambia	3	
Sierra Leone	2	
Haiti	2	
Côte d'Ivoire	2	

The Global Health Network Nigeria Country Centre launch event: Strengthening Nigeria's research capacity development



Resources

- <https://africa.tghn.org/country-centres/nigeria/>
- <https://oauife.edu.ng/>

Welcome address

Goodness Odey

**Partnership & Advocacy Coordinator, The
Global Health Network Nigeria Country
Centre**

Deputy Vice-Chancellor

RID

Professor Akanni Akinyemi

**Deputy Vice-Chancellor Research Innovation
and Development, Obafemi Awolowo
University, Ile-Ife, Nigeria**

Introducing The Global Health Network (TGHN)

Professor Trudie Lang

Director of The Global Health Network
(TGHN), University of Oxford, United
Kingdom

The Global Health Network

Equity in where research happens, who leads & who benefits

Health research methods are evolving fast – **new approaches should benefit everyone, everywhere**

Too few studies are undertaken in the Global South – the 90:10 Gap persists



Of those, too few are led by local researchers and are not tackling local priorities



Old norms of capacity building focus on one disease, product or protocol



A trusted facility used by researchers and research organisations for mobilizing knowledge and delivering capacity and abilities to teams over the long-term in the workplace ; Enabling research where evidence is lacking



A WHO collaborating Centre for research information sharing and capacity development

Globally Unique – transferring know-how across disease areas, types of research and between organisations, networks & regions

Communities of Practice

Vast interconnected communities of Practice mobilizing know-how across research topics and diseases

Active dissemination: raising standards & creating efficiency by transferring excellence and know-how between research projects and programmes

Applying the strongest information management technology so researchers anywhere can have the same access to the best methods, processes and training

The collage features several text boxes and images. The text boxes describe various WHO networks and initiatives, including COVID-19, sSCoRN, Global Health Data Science, AICDC, DAC, EBP GP, Global Communities for Injury Research, GEMRI, and The Global Health Network Africa, Asia, and LAC. The images show people working together in a meeting, a person using a laptop, and a group of people in a field setting.

Workplace based implementation of research skills – by doing

Working within existing networks, research organisations and in communities

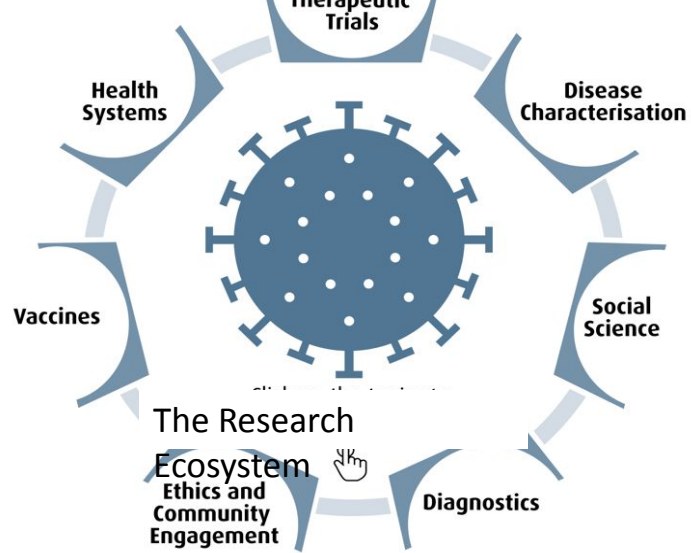
Cascading research skills across healthcare settings

Delivering learning-by-doing in specific studies to share expertise beyond centers of excellence, to support lasting, leading and internationally competitive research teams.

This knowledge mobilisation works as the barriers and knowledge don't differ between diseases



A WHO collaborating Centre for research information sharing and capacity development



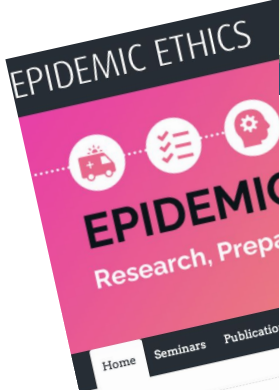
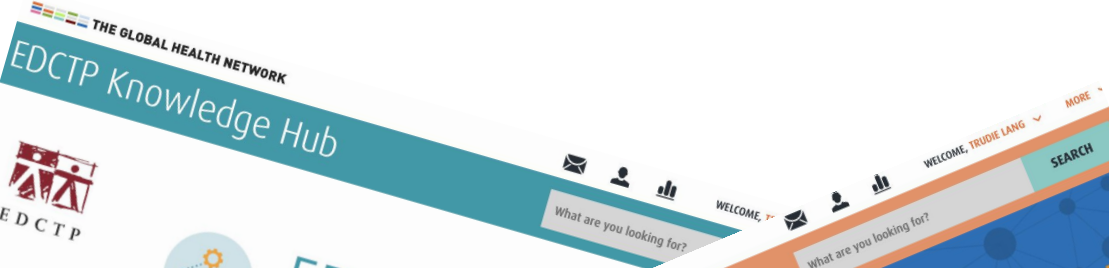
The Health Research Ecosystem - *The whole set of evidence vital to understand, treat, prevent and manage any disease*

The Health Research Cycle - *The required steps and processes for all studies – that don't vary between diseases*

Learning-by-doing generates evidence to tackle local priority health burdens & creates active abilities in place to spot and stop a new outbreak.

The Global Health Network does this at scale by active knowledge sharing and supporting teams

Used by organisations such as WHO, CEPI, IDRC, EDCTP and Wellcome
To reach the research community and deliver systematic methods and research
system strengthening



Home

We are a global bio pre-existing experti the context of publ



THEMES > GET INVOLVED > RESOURCES >

Welcome!

The Oswaldo Cruz Foundation (FioCruz) is the most prominent Institution of Science and Technology in Health in Latin America, based in Brazil. Its mission is to produce, disseminate and share knowledge and technologies

FIOCRUZ RESEARCH PRODUCTION

Sharing expertise through **joined up** tools, resources, webinars, workshops, training & career development

Global Health Training Centre

Welcome to the Global Health Training Centre

Online training
Free e-learning courses in global health research for staff of all roles, in all regions and covering all disease areas, developed by the Global Health Network in collaboration with respected partners such as the World Health Organization

Webinars
Online workshops and seminars in global health research, spanning research disciplines, regions, and therapeutic areas, aiming to foster collaboration, facilitate discussion, and celebrate advances and achievements towards faster and better research for health

Professional development
Build your professional profile, create your CV and track your career in global health research as it develops. This flexible framework covers all the competencies that should be demonstrated by a research team to carry out a successful study

RESEARCH PROCESSES & METHODS | SOCIAL SCIENCE, ETHICS & COMMUNITIES
| INFECTION, IMMUNITY & RESISTANCE | WOMEN & CHILD HEALTH

Workshops
Workshops are a valuable and engaging way to learn, providing a fantastic opportunity for collective training sessions, skills transfer, networking and information sharing.

The range of workshops and format for delivering these sessions can be creatively designed to best serve the context of the learning, including such as those being to support and strengthen capacity of both an individual and institutional level, the on-site and facilitate a wide range of practical workshops in their collaboration with communities and study across in diverse settings. Please do review the variety of workshops listed across the regions that cover a breadth of topics, which have generated rich responses from these sessions to health research globally.

AFRICA

Research in clinical health Emergencies	AFRICA TIC five health webinars	Research Ethics during Epidemics
Laboratory Quality Control	Infection Prevention and Control Alert	Grant Writing Workshop
Introduction to Scientific Writing	Laboratory quality control	PLNHS Workshop
Nigeria Workshop 2021	Treatment protocols and approaches from different countries: the African Story	Africa's capacity for real-time diagnostic of infectious diseases
Implementation of novel diagnostics	Improving clinical trial conduct in Africa	

GLOBAL

OSITI

Migrant Communities and the COVID-19 Pandemic: Ethical considerations
View this box on page 1 (page 1/8) 2021

Richard T Johnson Lecture | Neurologic morbidities from pediatric cerebral malaria - Looking Beyond the Body Count
View this box on page 1 (page 1/8) 2021

Indigenous communities, 'vulnerability', and the COVID-19 pandemic
View this box on page 1 (page 1/8) 2021

Introduction to Research for nurses and midwives
View this box on page 1 (page 1/8) 2021

Global Brain Health Clinical Exchange Platform - Critical Care of the Neurologic System in COVID-19
View this box on page 1 (page 1/8) 2021

Communicating Science to Facilitate the Uptake of Research Findings into Policy and Practice
View this box on page 1 (page 1/8) 2021

Essential Research Skills Training Curriculum

This study was developed as a collaboration between the Special Programme for Research and Training in Tropical Diseases (SPRTD) and the Global Health Network (GHN).

The aim of the Essential Research Skills Training Curriculum study is to describe the requirements of a skills, knowledge and attitude based research skills framework for staff in low and middle income countries who are involved in high quality research in health. The study was undertaken by a three-stage mixed methods consensus methodology to ensure an evidence-led approach for establishing the curriculum.

Download final report (PDF)

The Study Start ->
The Research Feedback and Findings ->
Definition and Recommendations ->

Developing an Evidence-led Essential Research Skills Training Curriculum
Delphi Study

Stage 1
Knowledge Gap Analysis
Delphi round 1
Delphi round 2

Stage 2
Pilot questionnaire
Panelist selection
Pilot survey round 1
Delphi round 1
Delphi round 2
Pilot survey round 2
Delphi round 2

Stage 3
Mapping
WHO-TDR & Stakeholders ratification Workshop

Good Clinical Laboratory Practice

Research Ethics Online Training

World Health Organization

GCLP Organization and Personnel

Introduction to Clinical Research 7 module

Ensuring Safety and Benefits

Introduction to Clinical Research 7 module
An overview of the basic concepts of clinical research, focusing on the main areas of why and how clinical research is carried out, the importance of ethics in research, and an outline of the five main clinical study designs.
English | Español | Français | Portuguese | Swahili | Wili | 中文

- Many different collaborators
- Open access, globally applicable
- Peer reviewed, regularly updated
- Certificate issued > 80% in quizzes

100,000 people taken courses

Professional Skills

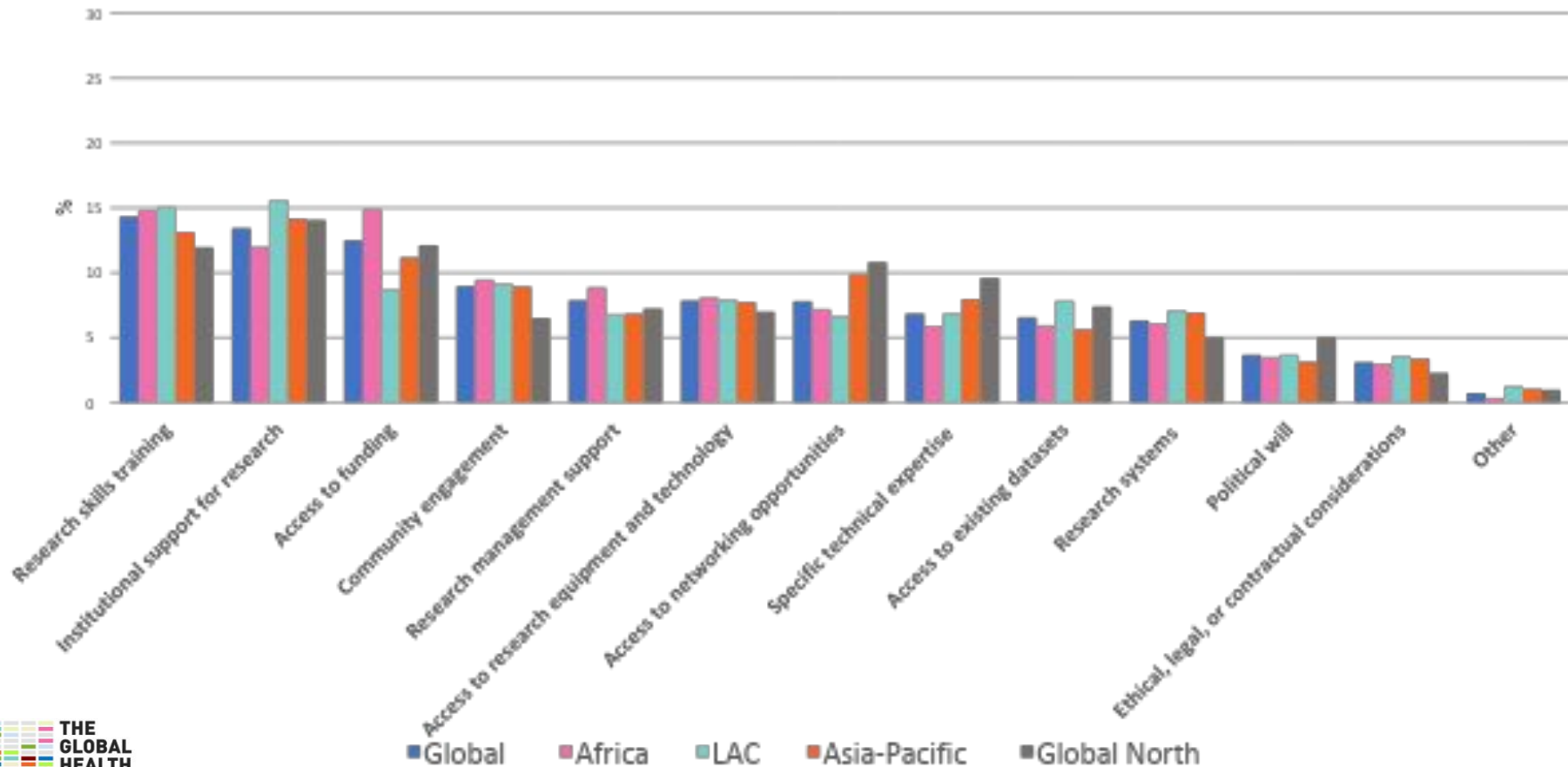
Scientific Thinking | Ethics, Quality & Risk management | Research Operations | Study & Site(s) management

Care competencies

Ethics, Quality & Risk management Area

Global Health Network

Barriers to research: Quantitative Results (n=6,000)



The Global Health Network GOVERNANCE

A Federated and Decentralised Franchise

Global Scientific Advisory Board

Global Strategic Partners Forum

Also
adding
MENA



TGHN LAC

Steering
Committee

Working
groups



TGHN AFRICA

Steering
Committee

Working
groups

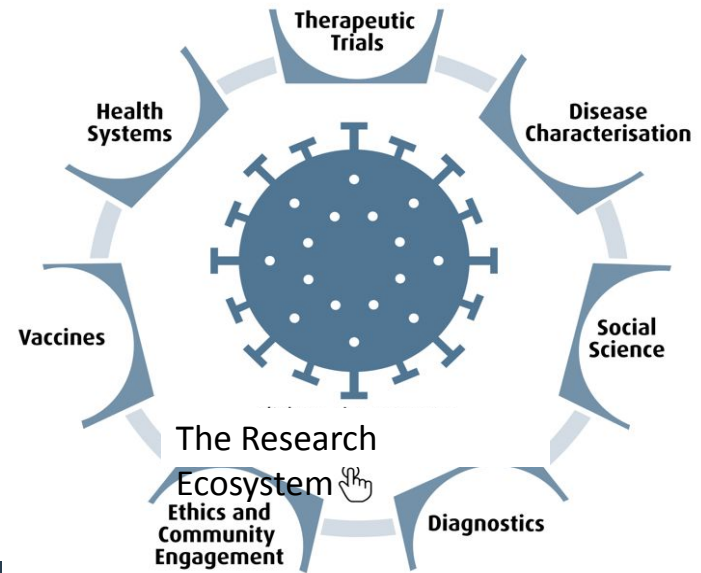


TGHN ASIA

Steering
Committee

Working
groups

Global Operations Team



The Health Research Ecosystem - *The whole set of evidence vital to understand, treat, prevent and manage any disease*

The Health Research Cycle - *The required steps and processes for all studies – that don't vary between diseases*

Learning-by-doing generates evidence to tackle local priority health burdens & creates active abilities in place to spot and stop a new outbreak.

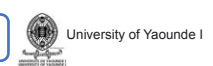
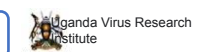
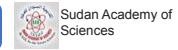
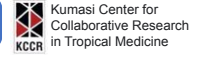
The Global Health Network does this at scale by active knowledge sharing and supporting teams

The Global Health Network - Africa

Regional Centres



Country Centres



*Dots on the map indicate collaborators/affiliates to The Global Health Network's current projects. Country centres include those with existing MOU/in progress with the indicated institutions.

Delivers long-term learning, resources and career impact journeys, like this....

Research skills and outputs



Regional in-person Capacity & Skills Sharing Activities



Metric	
Online courses taken	4.5M
Visits to the platform	Over 40M
In-person events attended	Over 5,000
Resources downloaded	Over 3M
Attended a webinar	Over 25,000

Ongoing access to more training, tools, resources and each other online

Time

1000 Challenge *....this about flipping the Pyramid*

Developing careers, skills and leadership



Typically health research is hierarchical, expensive, often led by a few PI's, sometimes from elsewhere : The top of the pyramid

In a pyramid the power is in the base: Pragmatic, practical and immediately implementable, studies led by the health workers answering questions to tackle the gaps they see

1000 Challenge

Developing careers, skills and leadership

A mechanism for nurses, midwives, community health workers and other allied health professionals to lead research studies that gather evidence to address priority issues in their communities.

It is a powerful opportunity for leadership and career development.

The challenge will be delivered through workplace learning whilst generating vital evidence to improve health outcomes in their communities

1000 Challenge

Developing careers, skills and leadership

What is the problem or gap in understanding?

Who is your population and where are you going to ask this question?

What question would address that gaps or understand the problem?

What will you measure to answer your question?

What data are you capturing and how will you record it?

How will you analysis your data ?

How will your findings be used, shared and disseminated?

Possible Outputs
- training
- new management protocols?
- guidance?
Who needs to be involved?

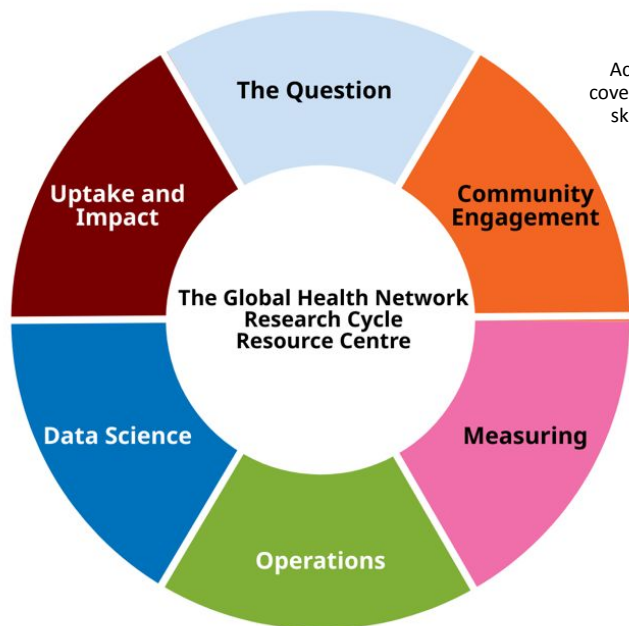
★ = Do you need help with this step?

The guidance system



The Global Health Network is a WHO collaborating Centre for research information sharing and capacity development

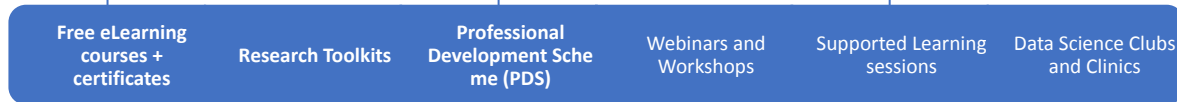
Access to Resources and Training – discovering what they didn't know



Accessible to anyone, 24/7, and covering topics in essential research skills essential topics related to health research

Tool which captures core competencies, qualifications, training and experience. Measures skills and impact of training

Person-centered, to foster effective learning strategies



Step-by-step guides to conducting and managing a research project in low-resource settings, Sharing protocols, guidelines, best practices

Online or in-person seminars, for skills transfer and information sharing

Forums for engagement, to exchange opinions, raise questions

The Global Health

Network, Nigeria Country

Centre (TGHN-Ng)

Dr Olanrewaju Ibigbami

Coordinator, TGHN Nigeria Country Centre; Senior Lecturer,
Department of Mental Health, College of Health Sciences,
Obafemi Awolowo University, Ile-Ife, Nigeria

The Global Health

Network, Nigeria Country

Centre (TGHN-Ng)

Dr Olanrewaju Ibigbami

Coordinator, TGHN Nigeria Country Centre;
Senior Lecturer, Department of Mental Health, College of
Health Sciences, Obafemi Awolowo University, Ile-Ife, Nigeria

OUTLINE

 AIM OF TGHN NG

 Activities of the TGHN Ng

 Organization

 Funding

 Proposed Timeline of activities for TGHN Ng in 2024

 Acknowledgments

Aim of TGHN Nigeria Country Centre

Aim of the The Country Centre:

- “Work with The Global Health Network to strengthen the country's and region's health research environment”.
- The Country Centre will be an active leader towards scaling up access to TGHN resources to serve more research communities in Nigeria and other nations in the Global South.

Through this partnership, country-level hubs are also granted:

- Access to all the eLearning and resources
- Research support
- Skills-based training opportunities
- Career development initiatives
- The development of high-quality and competitive research teams.
- Opportunities for supporting funded research

Activities of the TGHN Ng



Identify research priorities, needs, gaps and challenges faced by researchers.

Building of capable research teams, enhancing skills and promoting the training of young researchers

Strengthening research capacity and knowledge mobilisation, without the institutional barriers and associated perceptions.

Provide recognition for high-quality local research and work in healthcare for the country's researchers, teams and institutes on the neutral, trusted and internationally recognised platform of The Global Health Network

Activities of the TGHN Ng



Ensure connectivity with wider partner organisations and networks in a particular focus area or multiple interest areas with The Global Health Network as an agency for convening networks and partnerships.



Provide opportunities for stronger collaborations and participation in multi-centre funded research programmes.

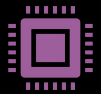


Secure access to all the eLearning modules and resources afforded through the platform for wider educational benefit.

Activities of the TGHN Ng



Career development activities to support leadership potential and ensure the development of high-quality and competitive research teams.



Increased visibility with key international actors including WHO, EDCTP, PAHO, TDR, CEPI, Bill & Melinda Gates Foundation, DNDi. These organisations use The Global Health Network to source and identify existing expertise, as well as potential groups and sites to collaborate with.

Activities of the TGHN Ng



To seek and collaborate on further joint research grant proposals, building on local and regional partnerships.



To design and implement programmes for skills sharing and research capacity building, some of which are seminars, workshops, webinars, research clubs, data clinics, mentorship and twinning activities.

Organization

TGHN Central Support

- Training team
- Digital team
- Communication team
- Research capacity and knowledge coordinators

Coordinators

Mentors

Steering committees

- Knowledge exchange
- Capacity building/professional development
- Research
- Grantsmanship/research funding
- Conferences and retreats

Funding



Task or project dependent



To secure sustainability, grant opportunities will be identified and applications will be submitted to support the partnership and locally relevant research programmes.



The Global Health Network central team will leverage and connect the country centre regionally and internationally, to apply independently or in collaboration with other centres to grant opportunities.



Funding awards will flow directly to lead applicants through the country centres, outlining the operational support and research grant management systems that is in-situ, within host institutions

Proposed Timeline of activities for TGHN Ng in 2024

January

Formal launch

- A virtual meeting to introduce TGHN Ng to a national and global audience



February

Steering Committee

- Constitution of the steering committee.
- Tasks assignment



March-August

Research Capacity Gap and Needs

- Research Capacity Gap and Needs Assessment
- Planning and Implementation of Capacity Building Initiatives



September -December

Data Science Gaps Analysis, Training and Community of Practice

- E-learning/trainings
- Data Science CoP
- Data Science Clinics



Grants opportunities

- Sourcing for funding
- Preparing proposals
- Submitting proposals



Acknowledgements



- ▶ Prof Trudie Lang
- ▶ Prof Akanni Akinyemi (DVC RID OAU)
- ▶ Prof Babatope Kolawole (Provost CHS OAU)
- ▶ Prof Morenike Folayan (ED CoR OAU)
- ▶ Prof Babajide Odu (D-URO CoR OAU)
- ▶ Prof Niran Oluwaranti (D L&P CoR OAU)
- ▶ Frank Kagoro
- ▶ Christine Kirima
- ▶ TGHN IT support team
- ▶ My Co-coordinators Pius and Goodness

References

- ▶ TGHN website
- ▶ TGHN OAU/Oxford University MOU
- ▶ Notes from meetings held between The Regional and National coordinators

Thank
you!



Keynote address: TGHN

Opportunities for Early Career

Researchers in Nigeria and Beyond;

2024-2025

Christine Kirima

**Africa Region Coordinator, The Global Health
Network, University of Oxford, Kenya**



Enabling research by sharing knowledge

TGHN NIGERIA COUNTRY CENTER

Empowering Researchers for Global Health Advancements

TGHN Nigeria Launch January, 2024

The Global Health Network

Equity in where research happens & who benefits

Agenda

1. Introduction – What it means to be a TGHN Country Centre
2. Opportunities for TGHN Nigeria Country Centre
 - Resources and Training



What it means to be a TGHN Country Centre

Coordination and support of global health research capacity
building training initiatives

Connect researchers,
health research
institutes, healthcare
workers and
policymakers of the
country

Support the exchange
of knowledge and
expertise, sharing and
disseminating
resources

Facilitate training
initiatives



Why Become TGHN Country Centre?

Mechanism for the Country Centre to identify their research priorities, needs, gaps and challenges faced by researchers.

Building capable research teams, enhancing skills and promoting the training of young researchers and other target groups in the country through in-person and remote regional activities.

Opportunity and means to deliver on country-specific research and health outcomes goals.

Strengthening research capacity and knowledge mobilisation, without the institutional barriers and associated perceptions.

Recognition for high-quality local research and work in healthcare for the country's researchers

Connectivity with wider partner organisations and networks in a particular focus area or multiple interest areas with The Global Health Network as an agency for convening networks and partnerships.

Opportunity for stronger collaborations and participation in multi-centre funded research programmes. The recently awarded status by WHO as a collaborating centre further adds credibility to The Global Health Network as an agency in this field.

Access to all the eLearning modules and resources afforded through the platform for wider educational benefit.

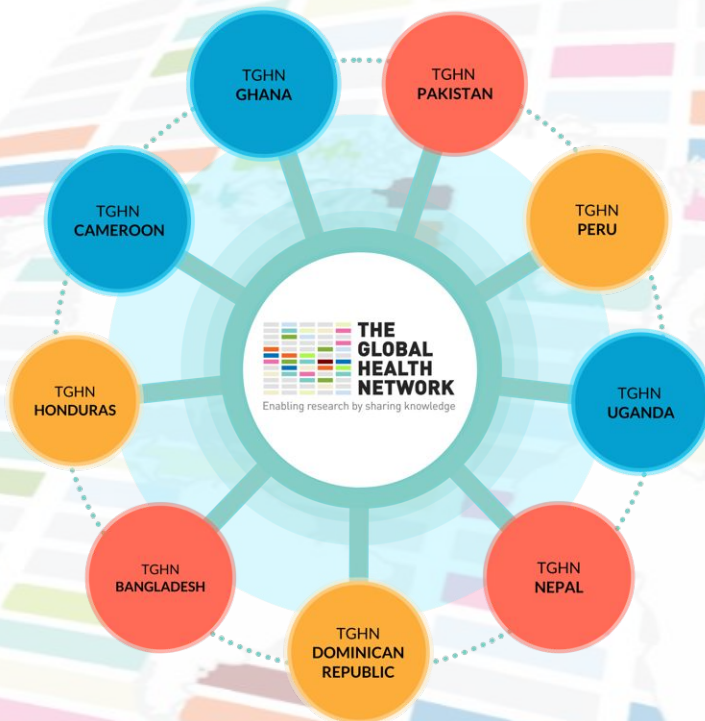
Career development activities to support leadership potential and ensure the development of high-quality and competitive research teams.

Increasing the volume of research for the country as well as institutional portfolio.

Increased visibility with key international actors

Federated Partnership of Country Centres

Each centre operates autonomously to win funding, address their local research focus and capacity gaps – connected with each other and working to shared standards and processes to maintain quality and access to each other resources

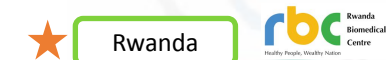
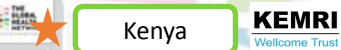
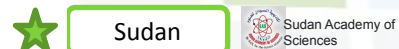


The Global Health Network Africa

Regional Centres

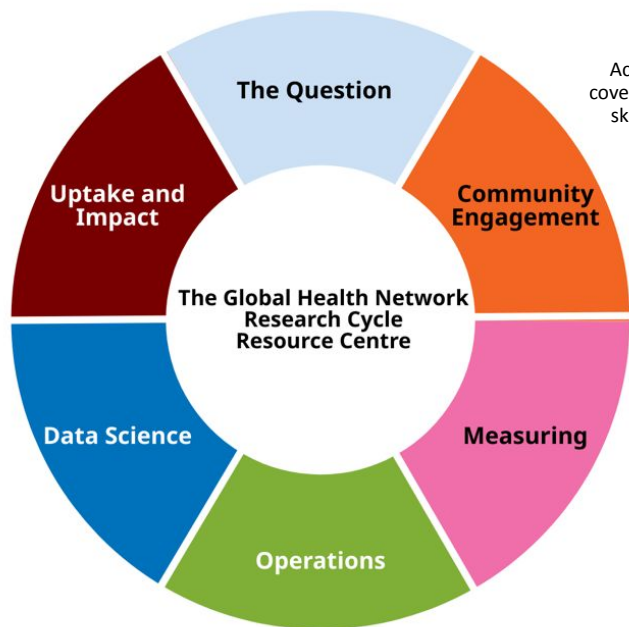


Country Centres



*Dots on the map indicate collaborators/affiliates to The Global Health Network's current projects. Country centres include those with existing MOU/in progress with the indicated institutions.

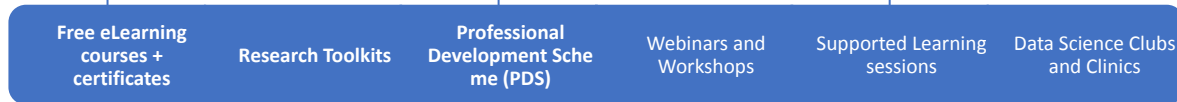
Opportunities; Access to Resources and Training



Accessible to anyone, 24/7, and covering topics in essential research skills essential topics related to health research

Tool which captures core competencies, qualifications, training and experience. Measures skills and impact of training

Person-centered, to foster effective learning strategies



Step-by-step guides to conducting and managing a research project in low-resource settings, Sharing protocols, guidelines, best practices

Online or in-person seminars, for skills transfer and information sharing

Forums for engagement, to exchange opinions, raise questions

Unveiling of Mentors

Godwin Pius Ohemu

Hub/Media Coordinator, The Global Health
Network Nigeria Country Centre



Prof. Morenike Oluwatoyin Folayan

Professor of Paediatric Dentistry, College of Health
Sciences, Obafemi Awolowo University.



Dr. Antor Odu Ndep

Senior Lecturer and HOD Department of Public Health,
University of Calabar.



Prof. Godwin N. Aja

Professor of Public Health, Babcock University, Nigeria
& Adventist International Institute of Advanced Studies



Prof. Adewale Adisa

Professor of Surgery, College of Health Sciences,
Obafemi Awolowo University.



Dr. Kome Otokunefor

Lecturer and Researcher, University of Port Harcourt.



Dr. Tochi Joy Okwor

AMR & IPC Coordinator and Chair Nigeria AMRCC,
Nigeria Centre for Disease Control.

Good will messages

Goodness Odey

**Partnership & Advocacy Coordinator, The
Global Health Network Nigeria Country
Centre**

Vote of thanks

Godwin Pius Ohemu

Hub/Media Coordinator, The Global Health
Network Nigeria Country Centre

Thank you.



**THE
GLOBAL
HEALTH
NETWORK
AFRICA**



**THE
GLOBAL
HEALTH
NETWORK**
Enabling research by sharing knowledge