

EVIDENCE-BASED POLICIES AND PRACTICES: CATALYSING POSITIVE CHANGE FOR ADOLESCENTS IN AFRICA

22ND NOVEMBER 2021

**Assistant Professor Elona Toska and
Dr Mona Ibrahim**

University of Cape Town and
University of Oxford



UK Research
and Innovation

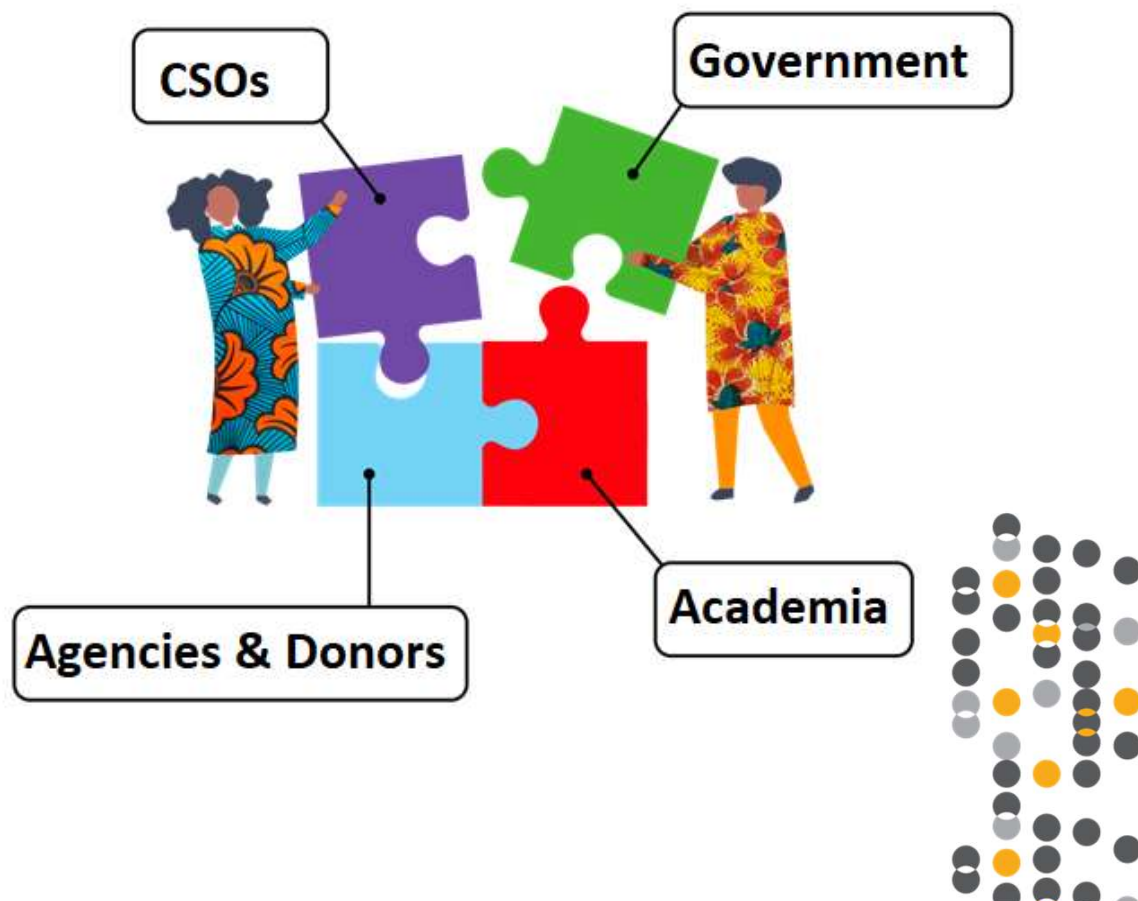


GCRF
Global Challenges
Research Fund



YOUTH ARE NOT A HOMOGENOUS GROUP

- Evidence- based collaborations for impact supports a unique understanding of youth and their priorities
- Engagement and inclusion are a cornerstone to comprehensive policies that for universal health coverage and accessible social assistance



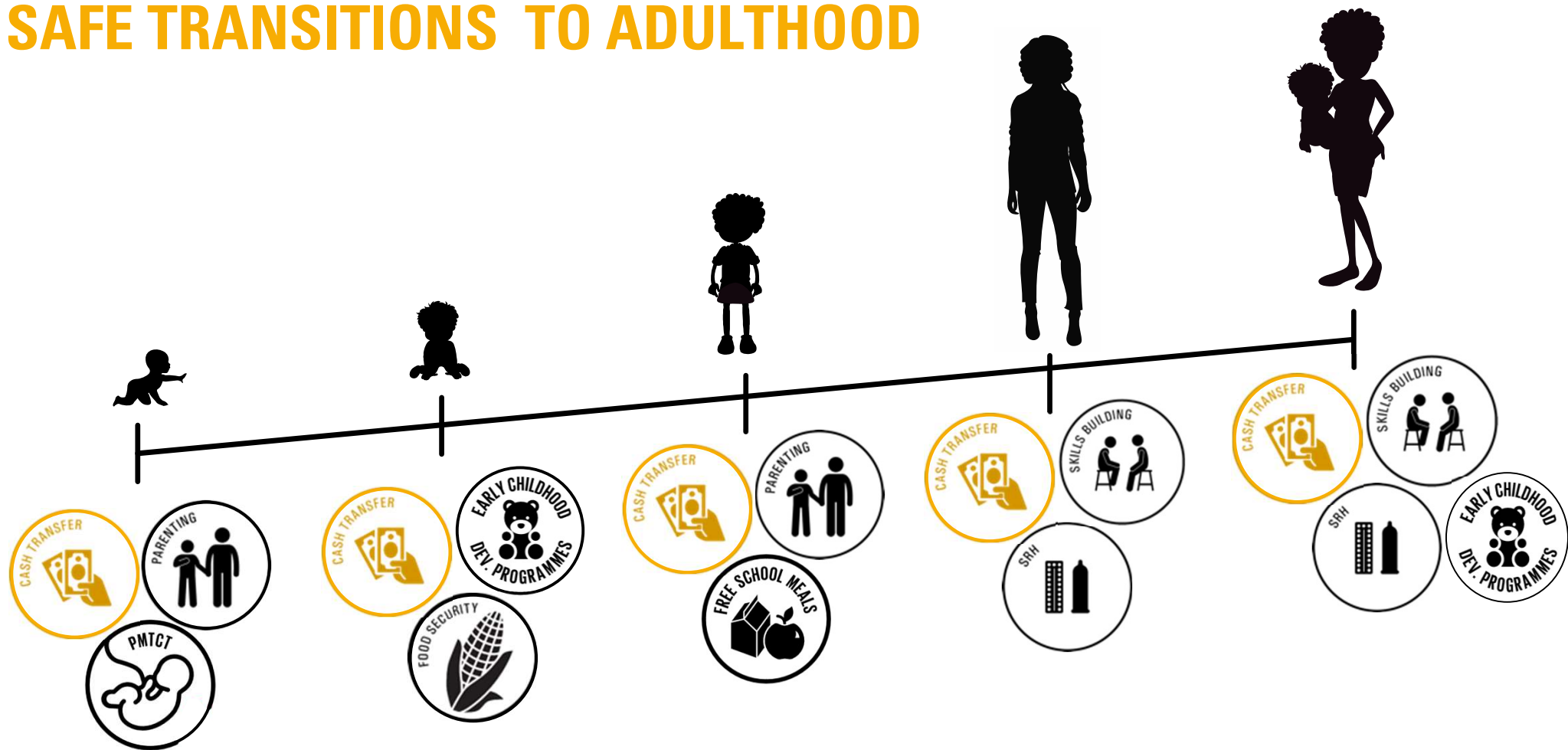
Slide 2

MIO

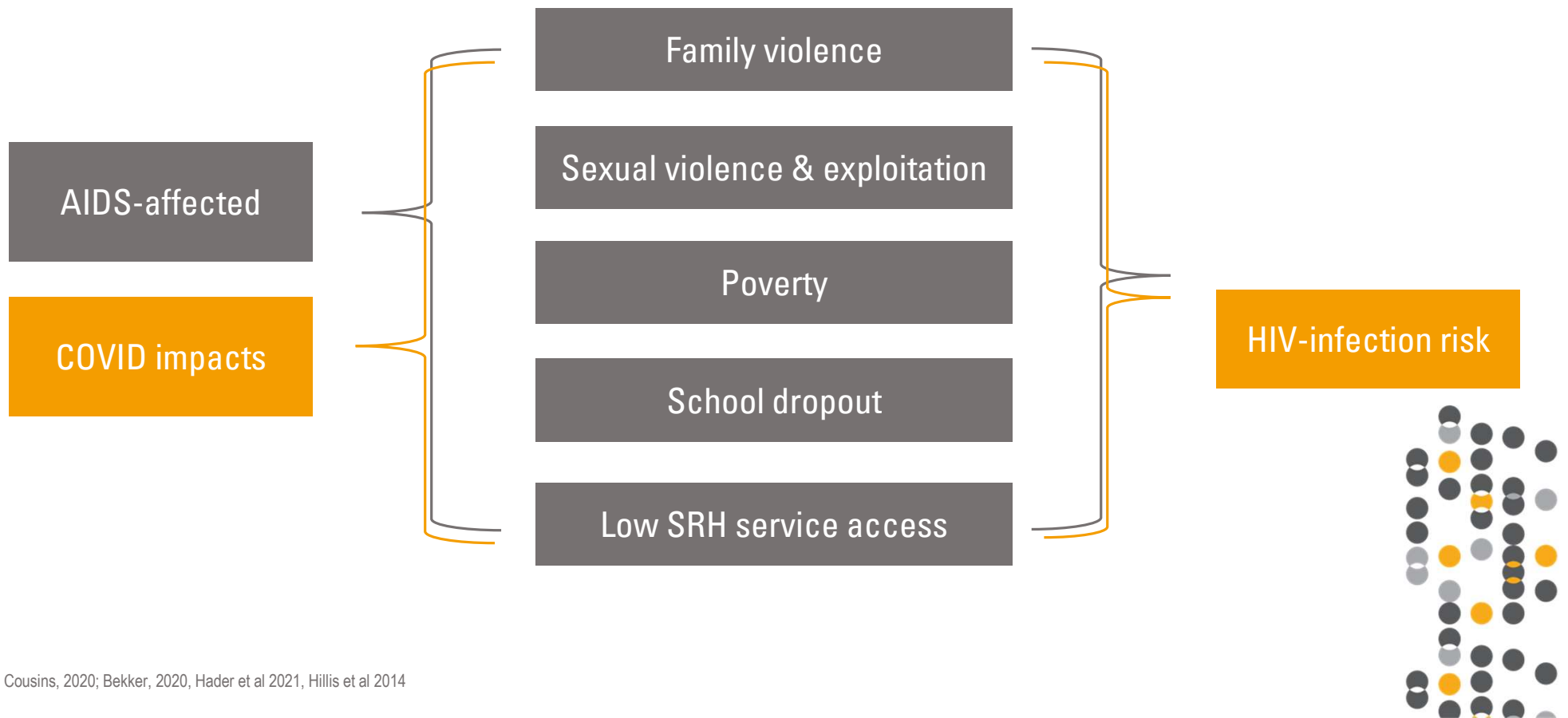
[@Elona Toska] - is this visual okay to kick off the presentation or is the one on different AGYW risks better?

Mona Ibrahim, 2021-11-22T09:55:18.548

BUILDING SYSTEMS THAT SUPPORT SAFE TRANSITIONS TO ADULthood



INCREASING CHALLENGES...



INCREASING CHALLENGES...

FINANCIAL INSECURITY & LACKING BASIC NECESSITIES



BEYOND WHAT MONEY CAN BUY: LOCKDOWN, STORES AND SOCIAL SERVICES

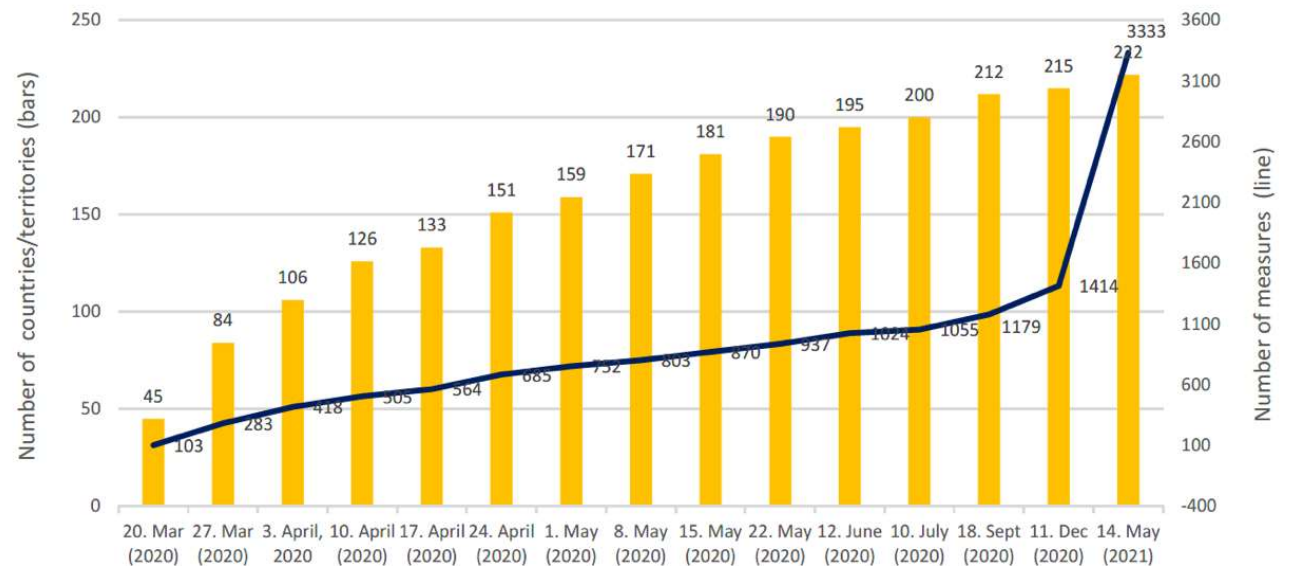


Lesley Gittings, Elona Toska, Sally Medley, Lucie Cluver, Carmen H. Logie, Nokubonga Ralayo, Jenny Chen & Jane Mbithi-Dikgole (2021): 'Now my life is stuck!': Experiences of adolescents and young people during COVID-19 lockdown in South Africa, Global Public Health, DOI: 10.1080/17441692.2021.1899262 / Link: <https://doi.org/10.1080/17441692.2021.1899262>

...AND INCREASING OPPORTUNITY

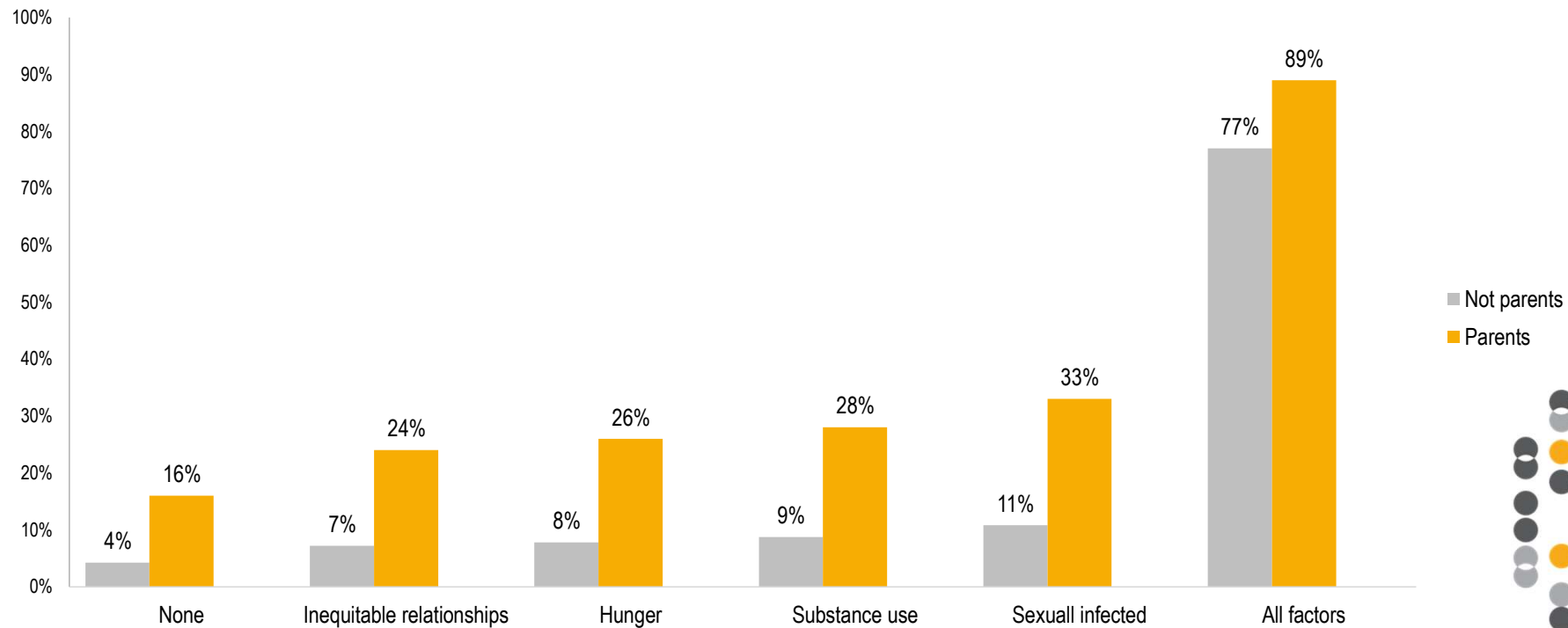
- More than 3000 new initiatives with spending up **270%** on social protection

Evolution in number of countries/territories and social protection measures



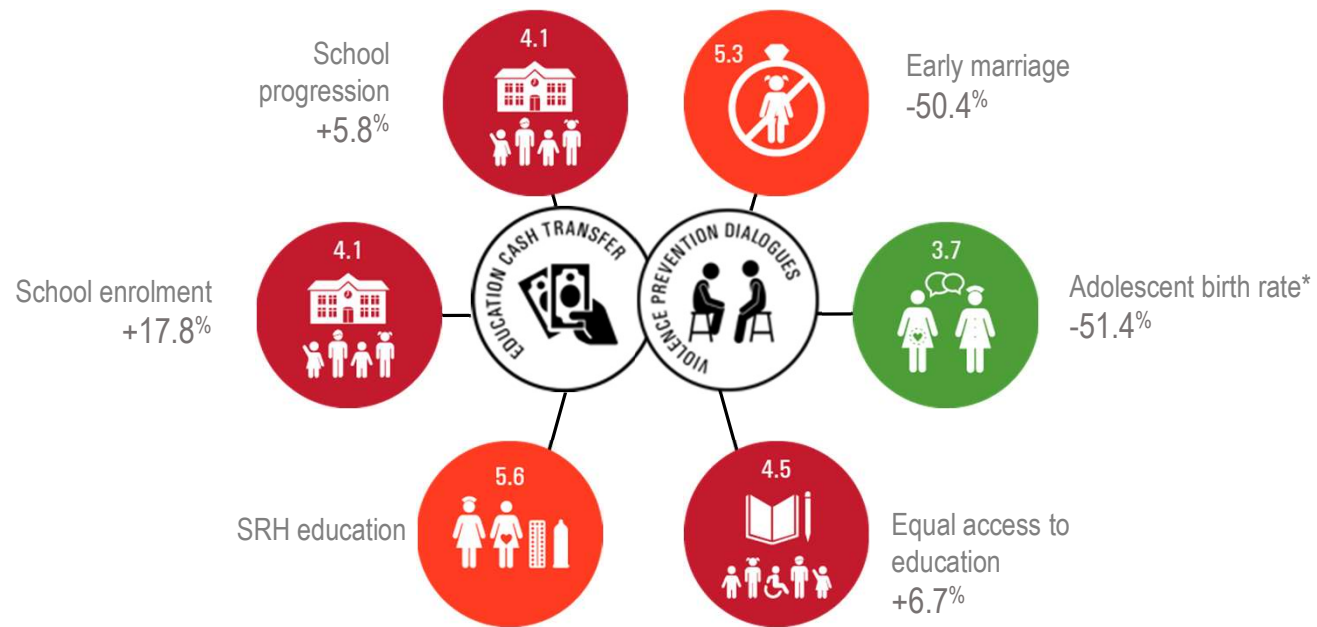
YOUTH-FRIENDLY SYSTEMS: THE IMPORTANCE OF INTEGRATED CARE

% probabilities of secondary transmission risk (viremia & sexual risk taking)



KENYA

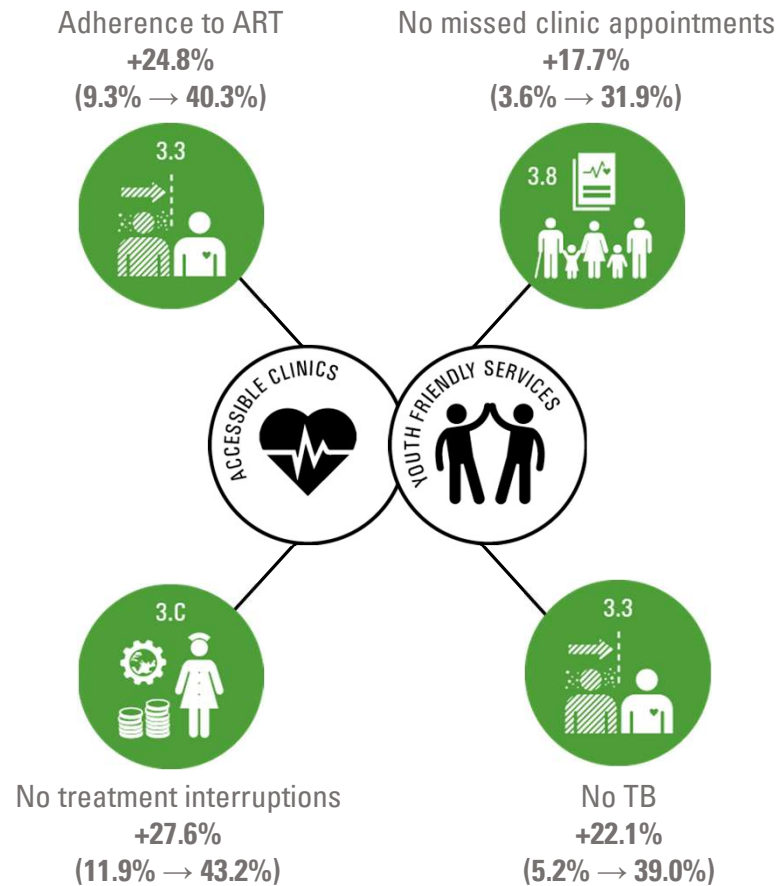
Girls



*Girls who were not in school at baseline (25.6% of full sample)

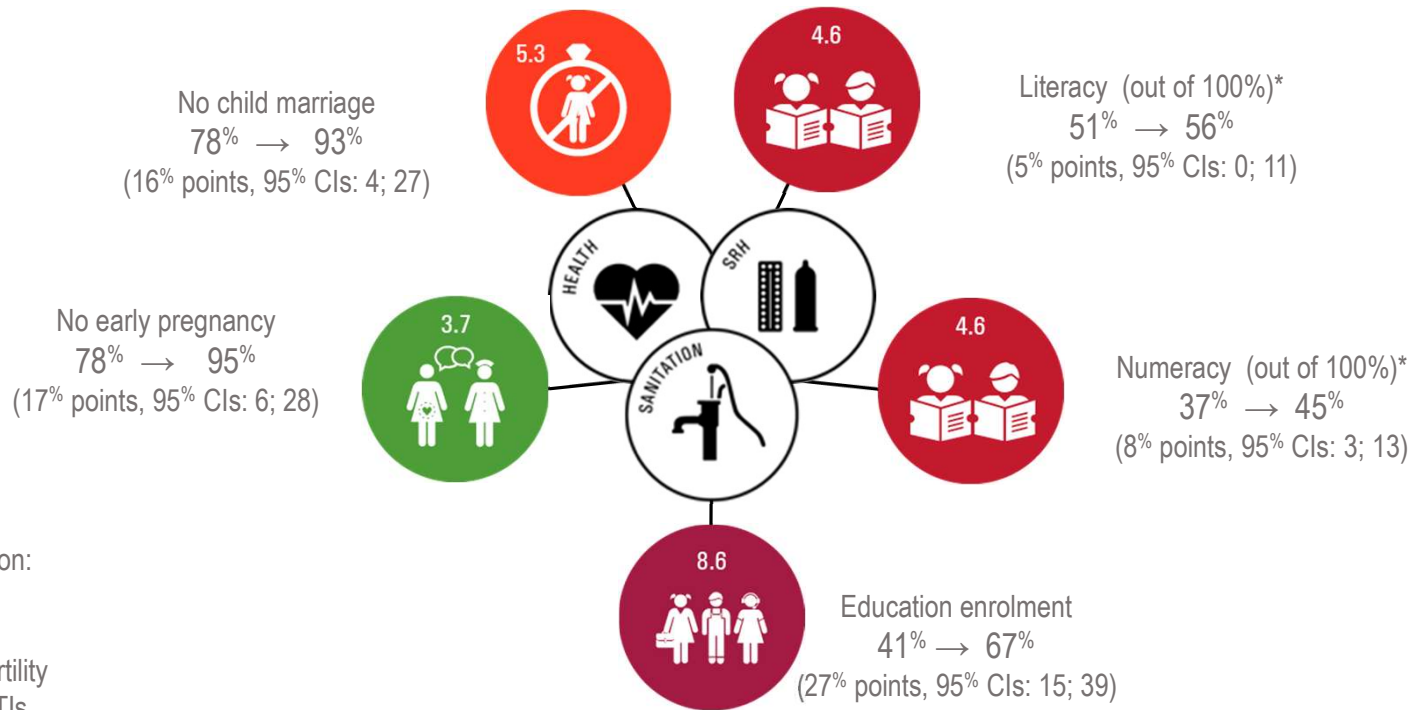
SOUTH AFRICA

Adolescent girls and young women living with HIV



ETHIOPIA

Girls



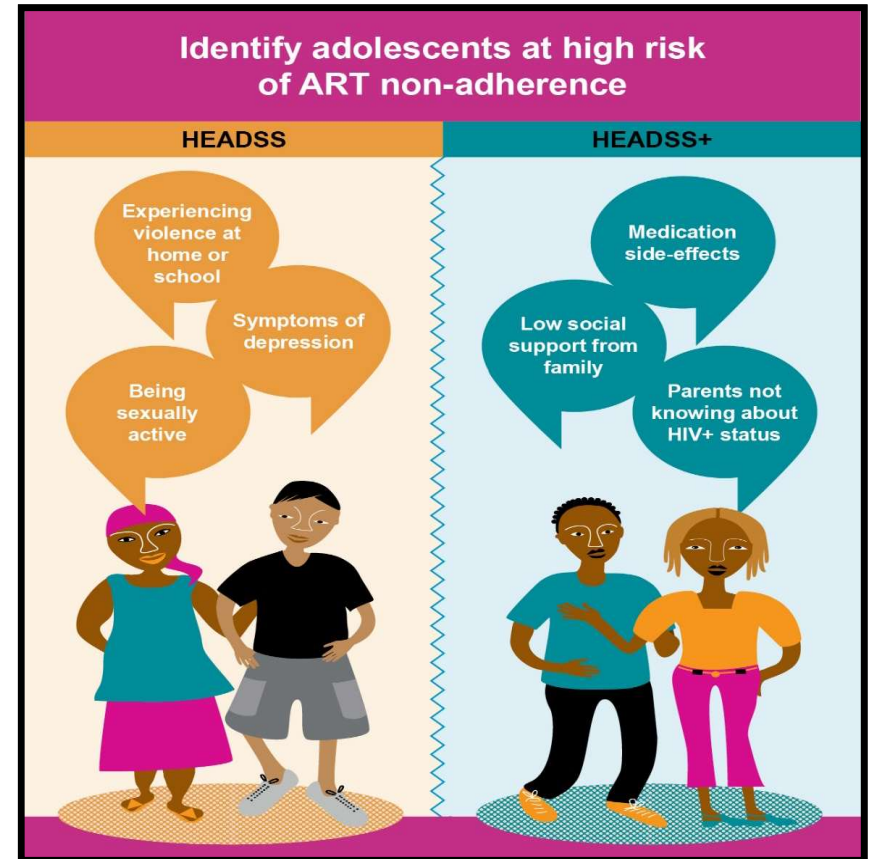
No evidence of association:

- Not underweight
- Very good health
- Knowledge about fertility
- Knowledge about STIs
- <3hrs per day on domestic tasks
- >4hrs per day in paid work

EQUAL ACCESS TO CARE AND MEDICATION FOR HIV TREATMENT: RECOGNISING UNSEEN THREATS



Image from The ExCo Group



Siyana Zhou, Elona Toska, Lucie Cluver (under review)

EVIDENCE BASED LINKAGES AND REFERRALS THROUGH COMMUNITIES OF PRACTICE



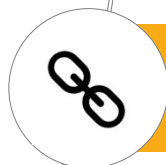
Ensure community healthcare workers address harmful social norms promoting positive attitudes towards **education and school progression** including improving access for out-of-school adolescents.



Confidential and youth-friendly health services that can respond to **sexual violence and GBV** and link to relevant support systems and legal entities.



Psychosocial support through links to mental health services, caregivers and positive parenting, peer support groups, and mentorship.



Improve links to social assistance to address poverty and hunger in high risk populations and people living with HIV (including adolescents living in HIV-affected households and HIV orphans)



Increase efforts to **reach high-risk adolescents and children** including those living in poverty, discrimination, and affected by humanitarian crises. This includes integrated community-based screening and awareness services.



UK Research
and Innovation



GCRF
Global Challenges
Research Fund



THANK YOU.

Elona.Toska@uct.ac.za

Mona.Ibrahim@spi.ox.ac.uk