

International Newborn Size at Birth Standards: Application



User guide

Contents

- 1. How to install and open the application*
- 2. How to compare the sizes of many newborns to the standards*
- 3. How to compare the size of a single newborn to the standards*
- 4. How to troubleshoot*



March 2017

HOW TO

1. INSTALL AND OPEN THE APPLICATION

WHERE CAN I FIND THE APP AND HOW DO I INSTALL IT?

The International Newborn Size at Birth Standards application can be on the INTERGROWTH-21st website on the Global Health Network:

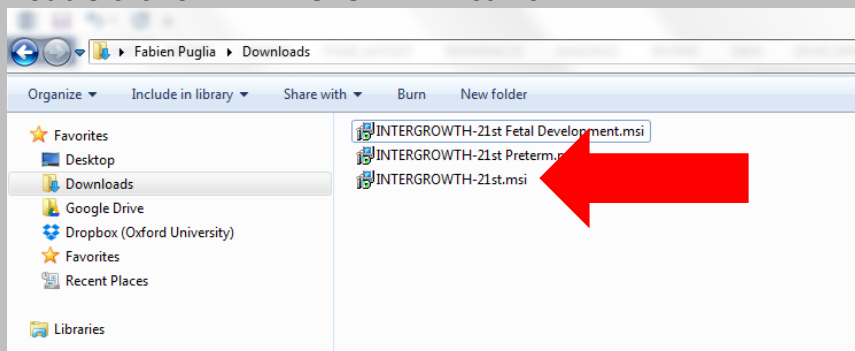
<https://intergrowth21.tghn.org/standards-tools/> or <http://bit.ly/IG21Tools>.

The application is available in 3 formats: for Windows, for Apple Mac and an online browser-based version, which requires internet connection.

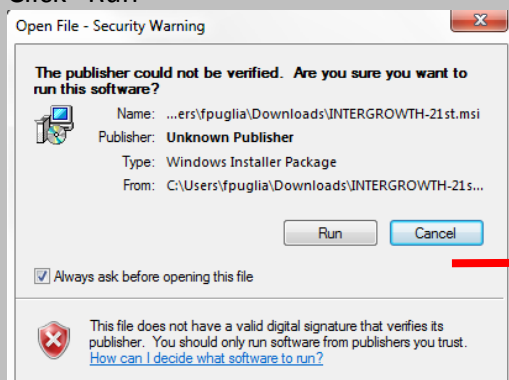
If you choose to download the application, it should by default be saved in the “Download” folder (unless you changed your preferences). Once downloaded, proceed to install the application.

On Windows

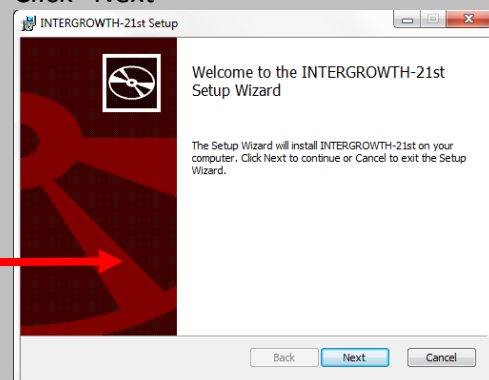
Double-click on “INTERGROWTH-21st.msi”



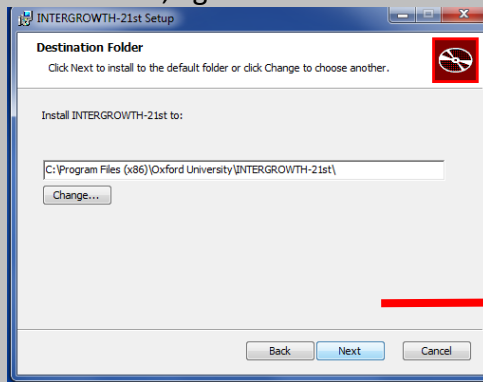
Click “Run”



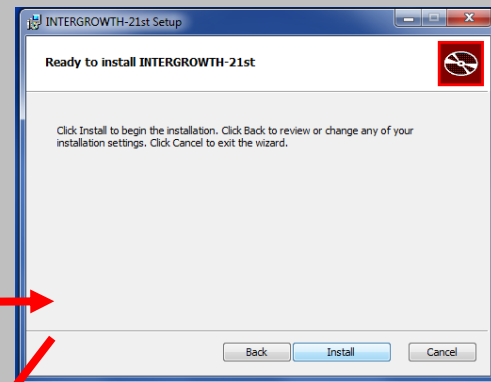
Click “Next”



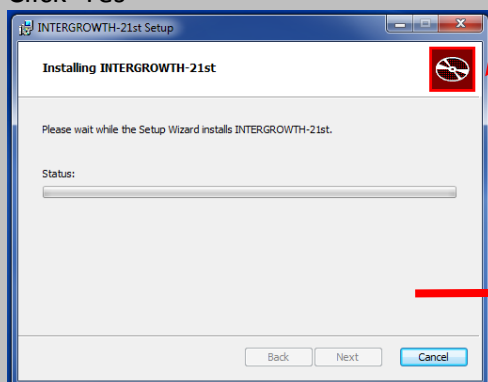
Click “Next”, again



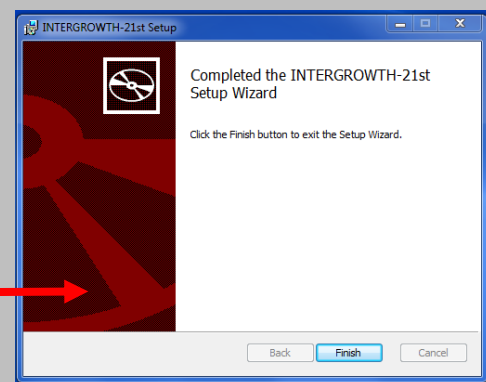
Then click “Install”



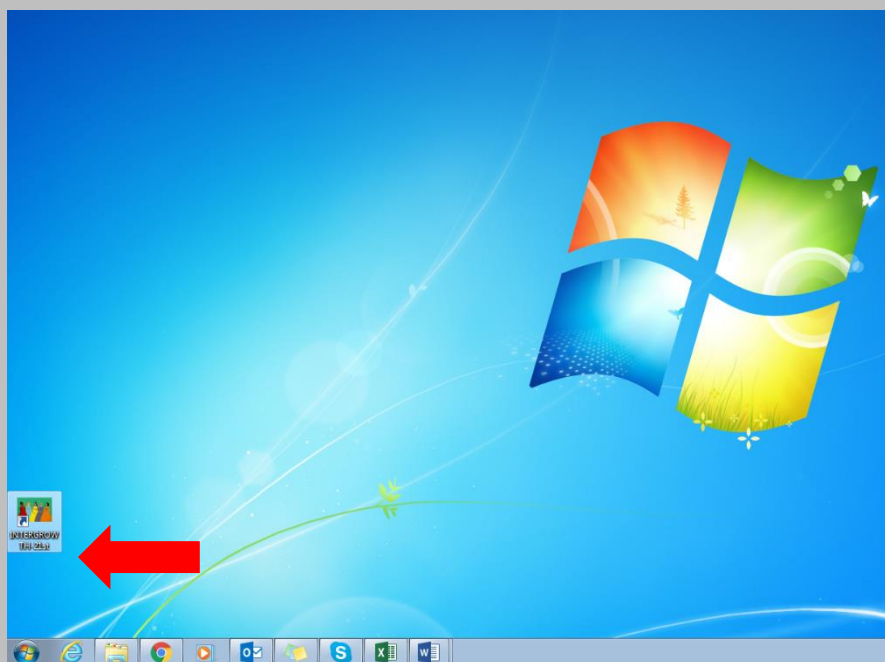
A screen will appear and your computer will ask permission to install the program. Click ‘Yes’



Once the installation is finished, click ‘Finish’



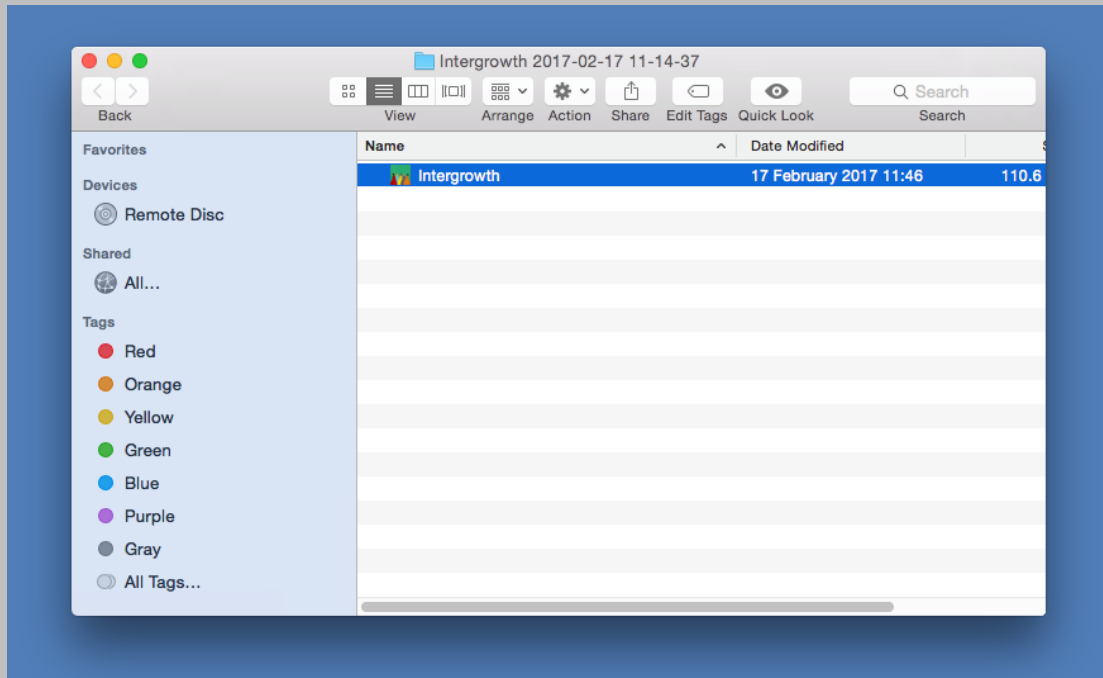
An icon will appear on your desktop.



Note that other versions of Windows may differ slightly.

On an Apple Mac

Go to the “Download” folder, select and open the “Intergrowth 2017-02-17 11-14-37” file (the name of the file may change for more recent versions of the application). The computer will unzip the file.



Once installed, you can (1) move the app to the “Launchpad” or (2) pin it in the “Dock” or (3) create a shortcut on the desktop.

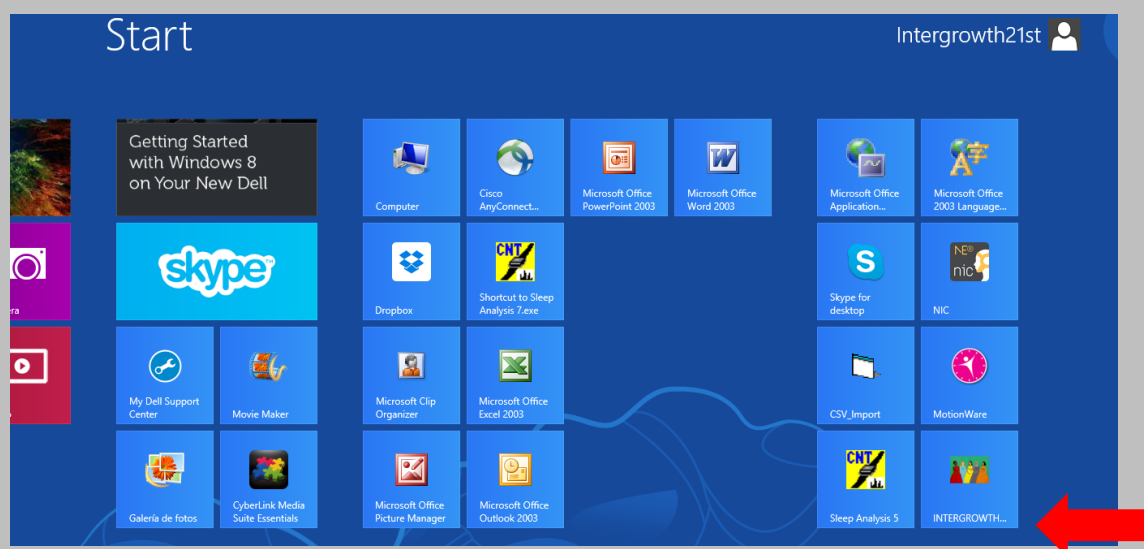
When you open the application, the INTERGROWTH-21st application icon will appear in the dock. The app can be used by clicking on this icon.



HOW TO OPEN THE APPLICATION

For Windows 7 and above

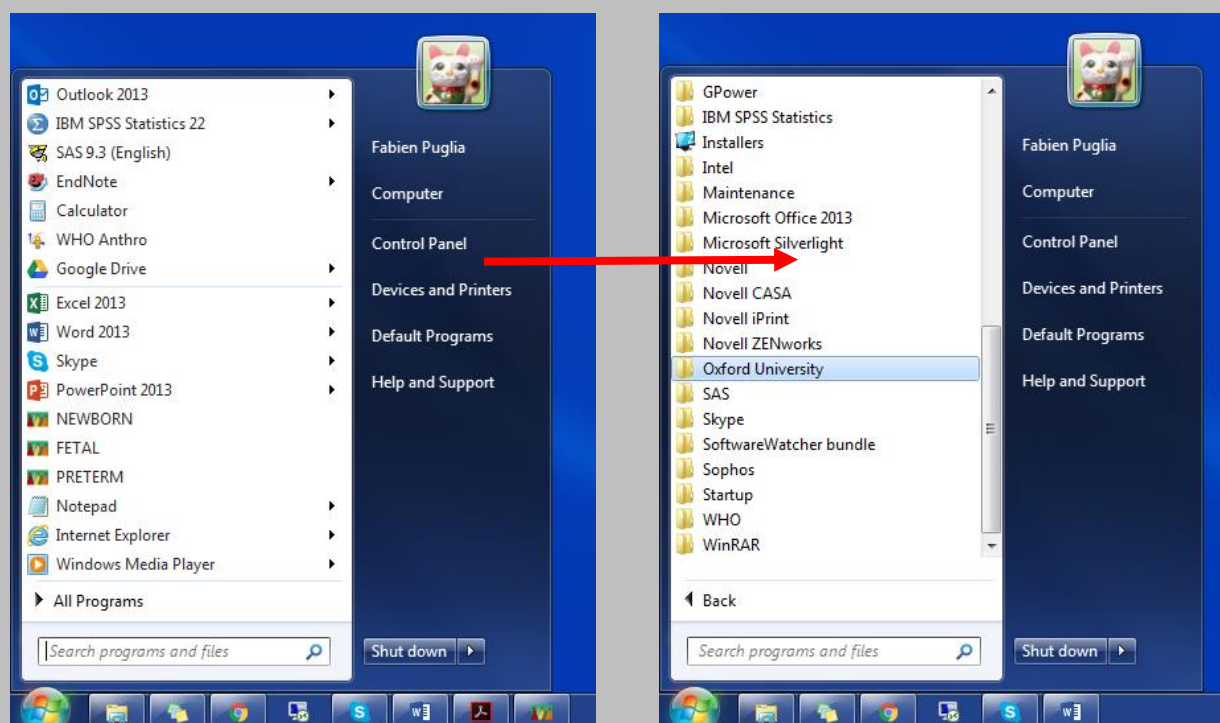
Open the INTERGROWTH-21st application



For previous versions of Windows

Click on the icon on the desktop or

Click on the “Start” icon at the bottom left of your screen. Go to “All programs”, then “Oxford University” folder and select the INTERGROWTH-21st Standards for Size at Birth application from the list.



On an Apple Mac

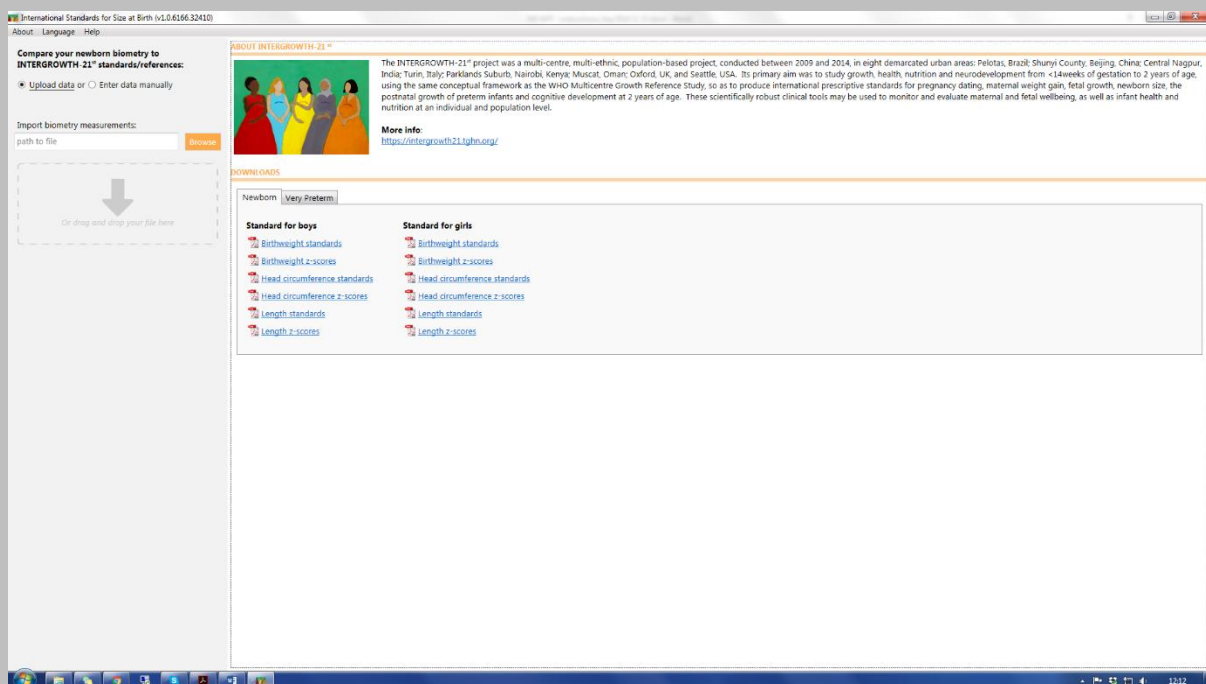
Click on the application icon to open it. The application can be found on the Launchpad, dock bar or desktop, depending on how you set it up.

DESCRIPTION OF THE APPLICATION

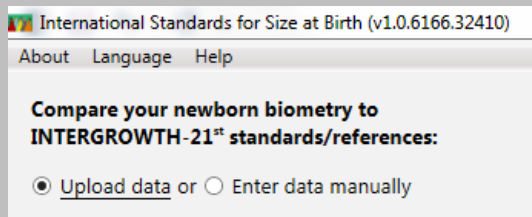
The application first opens on its home screen. The home screen is divided into 3 panes:

- On the upper right pane, there is a brief description of the INTERGROWTH-21st Project and a link to the Project's website
- On the lower right pane, you will find 2 tabs "Newborns" and "Very preterm", which contain links to the tables of centiles and z-score values for weight, length and head circumference
- On the left pane, you will find options to enter data manually or upload the file

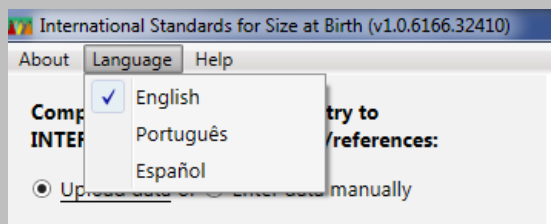
Home screen



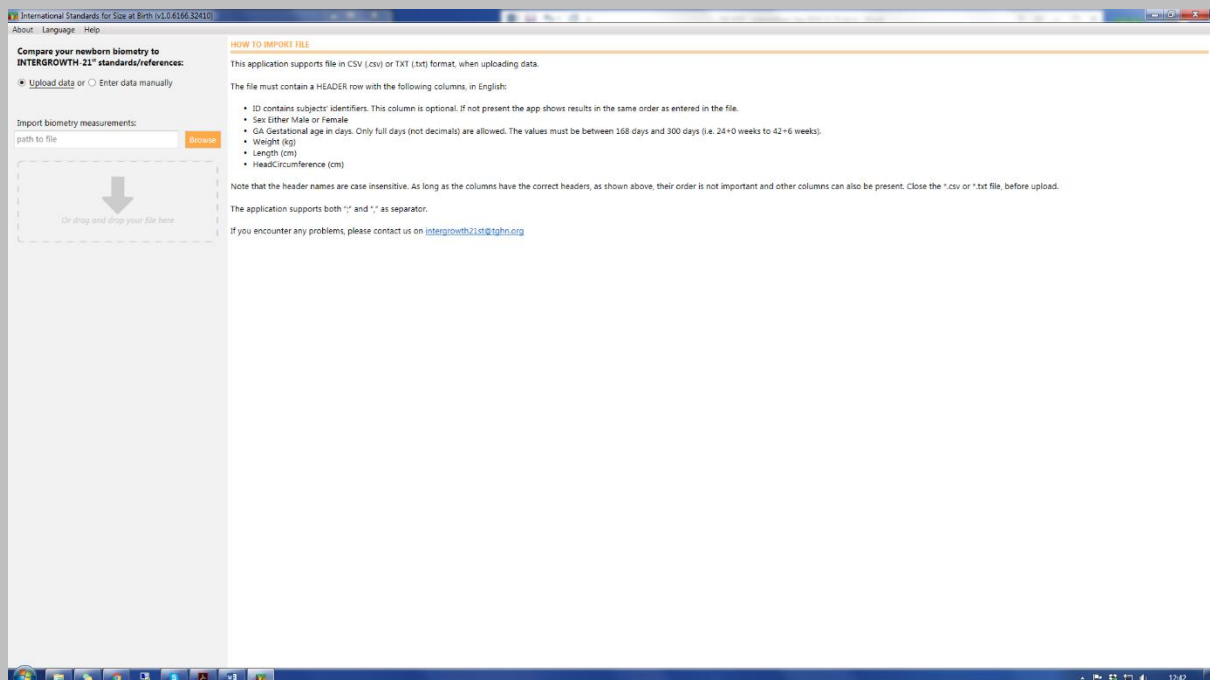
The menu bar at the top of the home screen has 3 options:



1. "About" takes you back to the home screen
2. "Language" offers the user a language option (English, Portuguese or Spanish) to operate the app. Choose the appropriate one for you



3. "Help" takes you to the help screen where you can find instructions on how to format your data correctly as well as an email address to contact us if you encounter any problems



The application is ready to use!

HOW TO

2. COMPARE THE SIZES OF MANY NEWBORNS TO THE STANDARDS

WHAT THE APP CAN DO FOR YOU

The application allows you to upload a *.csv or *.txt file with biometric data for an unlimited number of newborns (as an input), and download a file with z-scores and centiles for all biometric data (as an output).

HOW TO PROCEED

1. Prepare your data

The easiest way to proceed is to create a file in Excel according to the instructions in the Table and the examples presented below.

Column	ID	Gender	Gestational age	Biometric data
Header	ID	Sex	GA	Weight Length Headcircumference
Content	Any alphanumerical identifier	Male / Female Other terms (e.g. boys / girls or M / F) will not work.	Integer number without decimals in days Range: 24+0 to 42+6 weeks' gestation, i.e. 168 to 300 days	Weight should be in kg with up to 3 decimal places Length and head circumference in cm with up to 1 decimal place
Comment	Not compulsory, the app will present results in the same order as they appear in the original file	Compulsory	Compulsory	Not compulsory for head circumferencce, the 2 words need to be <u>joined with no space</u>

The column headings are not case-sensitive and their order is not fixed; other columns can also be present. What is important is that the headers appear as presented in the red box.

	A	B	C	D	E
1	Sex	GA	Weight	Length	HeadCircumference
2	Male	168	0.64	31.79	22.34
3	Female	169	0.65	31.97	22.47
4	Male	170	0.66	32.15	22.59
5	Female	171	0.68	32.33	22.72
6	Male	172	0.69	32.51	22.85

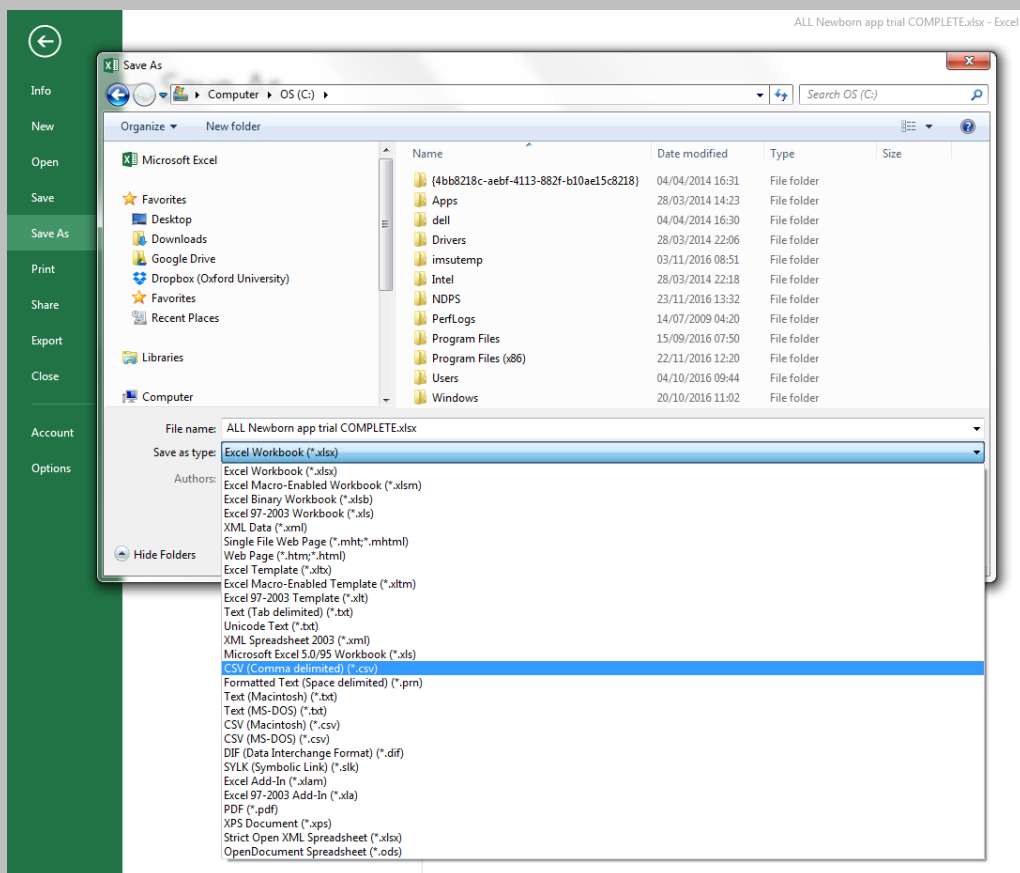
	A	B	C	D	E	F	G	H
1	GA	Apgar	weight	length	Place of b	headCircu	Sex	ID
2	168	1	0.64	31.79	Hospital	22.34	Male	07-001
3	169	2	0.65	31.97	Home	22.47	Female	07-002
4	170	3	0.66	32.15	Hospital	22.59	Male	07-003
5	171	4	0.68	32.33	Home	22.72	Female	07-004
6	172	5	0.69	32.51	Hospital	22.85	Male	07-005

For the biometric data, decimals can be separated by either a comma or decimal point (e.g. “2,5” or “2.5”)

2. Save your file

The application supports both *.csv and *.txt format. Save your Excel file as *.csv

File → Save as → Choose the location of your file → Enter the file name → Choose the *.csv format from the dropdown menu → Press “Save”



Do not save your file directly from Excel to *.txt. If you do so, the resulting *.txt file will be tab delimited and the application only supports *.txt files using a comma or a decimal point

as separators. An error message will appear when you try to upload your file (see Troubleshooting section, 3)

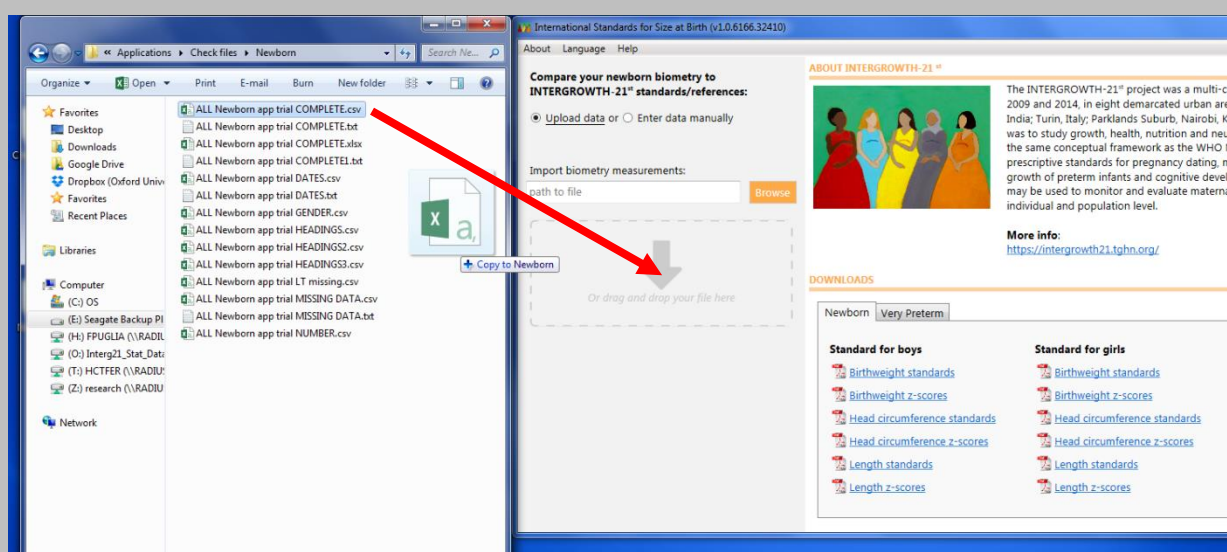
Once saved, close your dataset.

3. Open the application

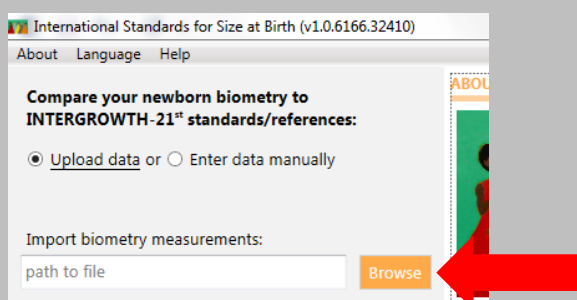
If not already open, see previous section on where to find and how to open the application on your computer.

4. Upload your file

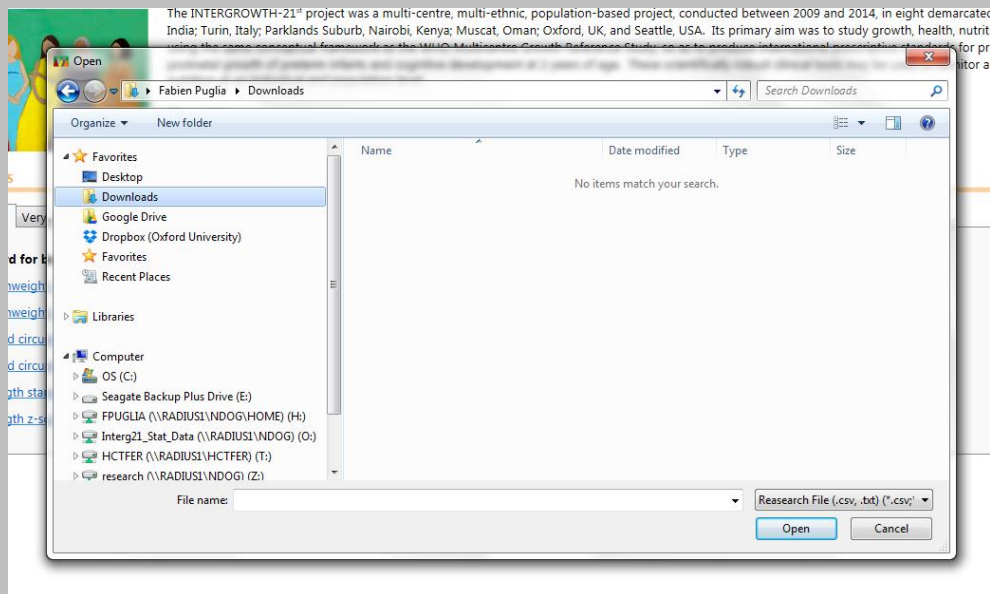
Either drag and drop your file to the dedicated zone as follows (Note that the “drag and drop” option only works for *.csv files)



Or use the “Browse” button on the application



Locate and select your file. Click 'Open'



At this point, the app will automatically calculate and display the results

International Standards for Size at Birth (v1.0.6166.32410)

About...Language...Help...

Compare your newborn biometry to INTERGROWTH-21st standards/references:

Upload data or Enter data manually

Import biometry measurements:
E:\Website, Tools & Products\Applications\Che...
E:\Website, Tools & Products\Applicati...
C:\B\B\Imported\11.03.2023\2303001.Rm...

133 entries, 18 errors

Child Id	Sex	Age (d)	Length (cm)	cm	z-score	centile	Weight (kg)	kg	z-score	centile	Head circumference (cm)	cm	z-score	centile
1	Male	168	31.79	N/A	-0.1633	43.51	0.64	N/A	0.0204	50.81	22.34	N/A	-0.0008	49.97
	N/A	N/A	N/A	N/A	N/A	N/A	N/A	N/A	N/A	N/A	N/A	N/A	N/A	N/A
	N/A	N/A	N/A	N/A	N/A	N/A	N/A	N/A	N/A	N/A	N/A	N/A	N/A	N/A
4	Female	171	32.33	N/A	-0.0009	49.96	N/A	N/A	N/A	N/A	22.72	0.1600		56.36
5	Male	172	N/A	N/A	N/A	N/A	0.69	N/A	0.0118	50.47	22.85	0.0009		50.04
6	Female	173	32.70	N/A	0.0018	50.07	0.70	N/A	0.2836	61.16	N/A	N/A	N/A	
7	Male	174	32.88	N/A	-0.1628	43.53	0.72	N/A	0.0349	51.39	23.10	-0.0014		49.95
8	Female	175	33.06	N/A	0.0007	50.03	0.73	N/A	0.3042	61.95	23.23	0.1618		56.43
	N/A	N/A	N/A	N/A	N/A	N/A	N/A	N/A	N/A	N/A	N/A	N/A	N/A	N/A
10	Female	177	33.42	N/A	-0.0004	49.98	0.76	N/A	0.3171	62.44	23.48	0.1595		56.34
11	Male	178	33.60	N/A	-0.1650	43.45	0.77	N/A	-0.0086	49.66	23.61	0.0004		50.02
12	Female	179	33.78	N/A	-0.0015	49.94	0.79	N/A	0.3231	62.67	23.74	0.1636		56.50
13	Male	180	33.97	N/A	-0.1622	43.56	0.80	N/A	-0.0047	49.81	23.86	-0.0019		49.92
14	Female	181	34.15	N/A	0.0012	50.05	0.82	N/A	0.3227	62.65	23.99	0.1613		56.41
15	Male	182	34.33	N/A	-0.1633	43.51	0.83	N/A	-0.0069	49.72	24.12	0.0022		50.09
16	Female	183	34.51	N/A	0.0001	50.01	0.85	N/A	0.3184	62.41	24.24	0.1589		56.31
17	Male	184	34.69	N/A	-0.1644	43.47	0.86	N/A	-0.0149	49.41	24.37	-0.0001		50.00
18	Female	185	34.87	N/A	-0.0010	49.96	0.88	N/A	0.3047	61.97	24.50	0.1630		56.48
19	Male	186	35.05	N/A	-0.1655	43.43	0.89	N/A	-0.0281	48.88	24.62	-0.0024		49.90
20	Female	187	35.24	N/A	0.0018	50.07	0.91	N/A	0.2880	61.33	24.75	0.1607		56.38
21	Male	188	35.42	N/A	-0.1628	43.53	0.93	N/A	0.0097	50.39	24.88	0.0017		50.07
22	Female	189	35.60	N/A	0.0007	50.03	0.95	N/A	0.3215	62.61	25.00	0.1584		56.29
23	Male	190	35.78	N/A	-0.1639	43.49	0.96	N/A	-0.0146	49.42	25.13	-0.0007		49.97
24	Female	191	35.96	N/A	-0.0004	49.98	0.98	N/A	0.2942	61.57	25.26	0.1625		56.45
25	Male	192	36.14	N/A	-0.1650	43.45	1.00	N/A	0.0090	50.36	25.38	-0.0030		49.88
26	Female	193	36.32	N/A	-0.0015	49.94	1.02	N/A	0.3141	62.33	25.51	0.1602		56.36
27	Male	194	36.51	N/A	-0.1623	43.56	1.03	N/A	-0.0247	49.01	25.64	0.0011		50.04
28	Female	195	36.69	N/A	0.0012	50.05	1.05	N/A	0.2779	60.94	25.77	0.1643		56.52
29	Male	196	36.87	N/A	-0.1634	43.51	1.07	N/A	-0.0133	49.47	25.89	-0.0012		49.95
30	Female	197	37.05	N/A	0.0001	50.00	1.09	N/A	0.2861	61.26	26.02	0.1620		56.43
31	Male	198	37.23	N/A	-0.1645	43.47	1.11	N/A	-0.0081	49.68	26.15	0.0029		50.12
32	Female	199	37.41	N/A	-0.0010	49.96	1.13	N/A	0.2883	61.34	26.27	0.1597		56.34
33	Male	200	37.59	N/A	-0.1656	43.43	1.15	N/A	-0.0088	49.65	26.40	0.0006		50.02
34	Female	201	37.78	N/A	0.0018	50.07	1.17	N/A	0.2849	61.22	26.53	0.1638		56.50
35	Male	202	37.96	N/A	-0.1628	43.53	1.19	N/A	-0.0148	49.41	26.65	-0.0017		49.93

5. Read the data

The app displays “N/A” (Not Applicable) in the result pane:

- For a whole line if either gender, GA or both are missing (lines 2 and 3)
- For a specific measurement, if no data were present in the file (lines 4, 5 and 6)

133 entries, 18 errors

Export

Child		Length (cm)				Weight (kg)				Head circumference (cm)			
Id	Sex	Age (d)	cm	z-score	centile	kg	z-score	centile	cm	z-score	centile		
1	Male	168	31.79	-0.1633	43.51	0.64	0.0204	50.81	22.34	-0.0008	49.97		
	N/A	N/A	N/A	N/A	N/A	N/A	N/A	N/A	N/A	N/A	N/A		
	N/A	N/A	N/A	N/A	N/A	N/A	N/A	N/A	N/A	N/A	N/A		
4	Female	171	32.33	-0.0009	49.96	N/A	N/A	N/A	22.72	0.1600	56.36		
5	Male	172	N/A	N/A	N/A	0.69	0.0118	50.47	22.85	0.0009	50.04		
6	Female	173	32.70	0.0018	50.07	0.70	0.2836	61.16	N/A	N/A	N/A		
7	Male	174	32.88	-0.1628	43.53	0.72	0.0349	51.39	23.10	-0.0014	49.95		
8	Female	175	33.06	0.0007	50.03	0.73	0.3042	61.95	23.23	0.1618	56.43		
	N/A	N/A	N/A	N/A	N/A	N/A	N/A	N/A	N/A	N/A	N/A		
10	Female	177	33.42	-0.0004	49.98	0.76	0.3171	62.44	23.48	0.1595	56.34		

6. Export the data

Click the “Export” button on the top right corner of the result pane. Then select a location for your file, enter a name, and click Save. The exported file is a *.csv with new z-score and centile columns for each measure (birthweight, length and head circumference).

Results can also be directly copied and pasted from the application.

7. Compare a new batch of data

To upload a new *.csv or *.txt file for comparison with the standards, first remove the previous file by clicking on the trash bin icon. Then start again from step 3.

HOW TO

3. COMPARE THE SIZE OF A SINGLE NEWBORN TO THE STANDARDS

WHAT THE APP CAN DO FOR YOU

The application allows you to enter data (birthweight, length, and head circumference) manually for one newborn at a time (as an input), view the results in the application (both z-scores / centiles and graphically), and directly download a *.pdf file of the results.

HOW TO PROCEED

1. Select manual entry mode

When you are on the home screen, click on the radio button “Enter data manually”. This will toggle from Data batch upload to Manual entry.

2. Enter data manually

International Standards for Size at Birth (v1.0.6166.32410)
About Language Help

Compare your newborn biometry to
INTERGROWTH-21st standards/references:

☐ Upload data or ☒ Enter data manually

Newborn Sex:

Weeks:

24	25	26	27	28	29	30	31	32
33	34	35	36	37	38	39	40	41
42								

Days:

0	1	2	3	4	5	6
---	---	---	---	---	---	---

Length (cm):

Weight (kg):

Head circumference (cm):

1. Select “Newborn Sex”

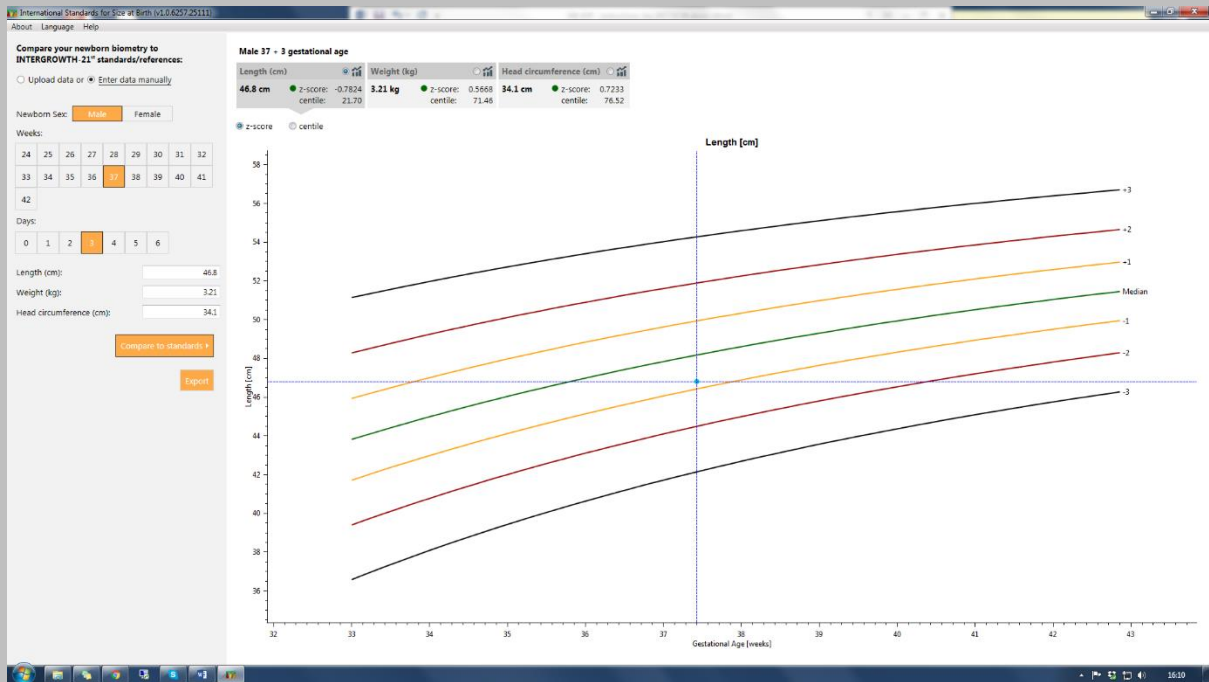
2. Select gestational age in weeks and days

3. Enter at least one of the 3 measurements

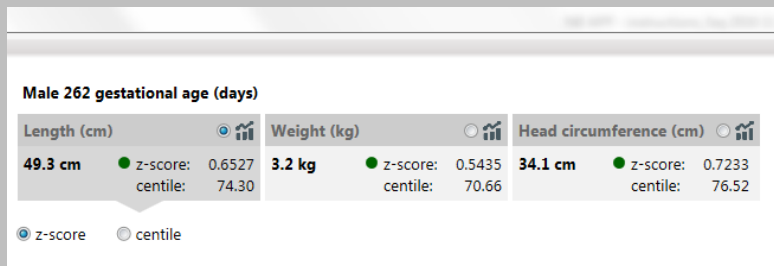
4. Click “Compare to standards”

5. Click “Export” to save a *.pdf document of your data

3. Look at the results and graph



You can navigate between measurements by choosing their tabs and choose between z-score and centiles. You can also zoom in and out.



4. Export and print the data

Click on “Export” to download automatically a *.pdf file containing the results and graphs for each measurement.

International Standards for Size at Birth (v1.0.6166.32410)

About Language Help

Compare your newborn biometry to INTERGROWTH-21st standards/references:

☐ Upload data or ☒ Enter data manually

Newborn Sex:

Weeks:

24	25	26	27	28	29	30	31	32
33	34	35	36	37	38	39	40	41
42								

Days:

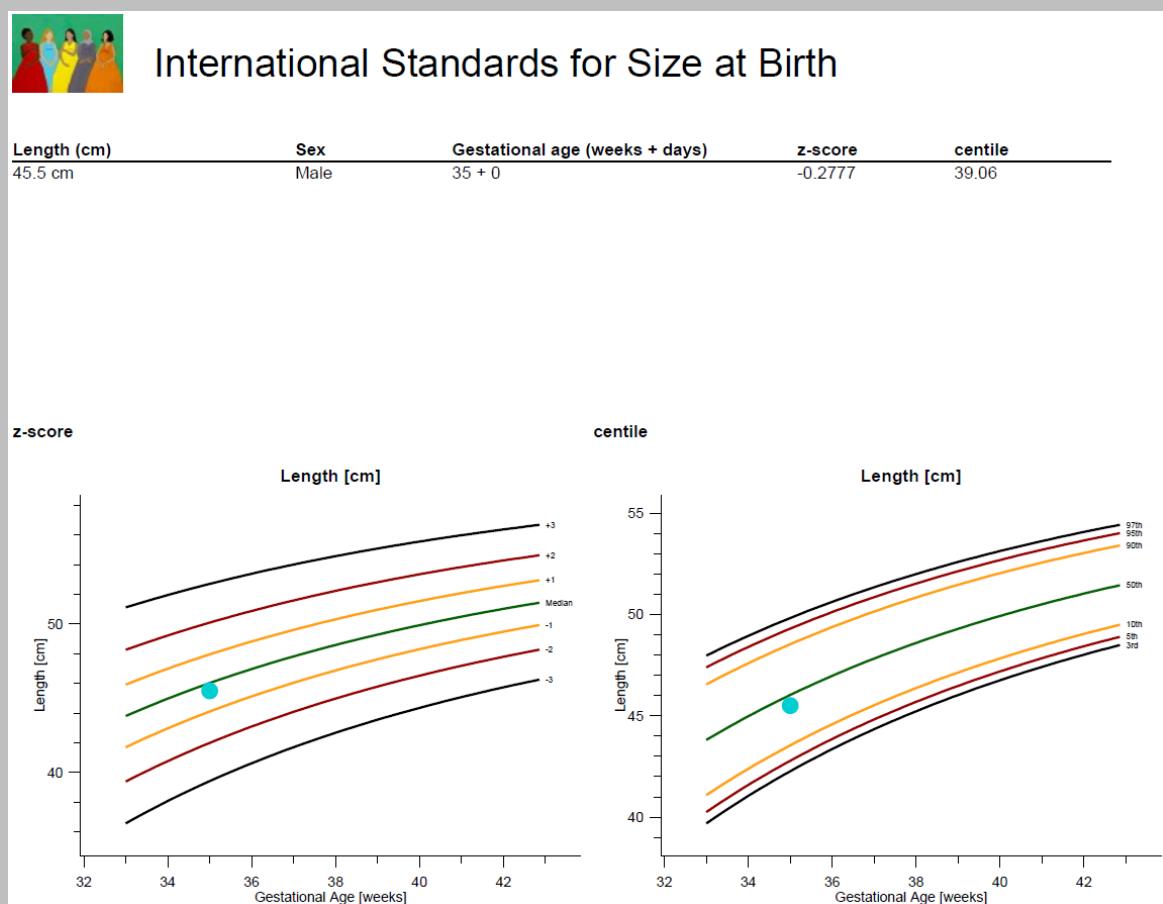
0	1	2	3	4	5	6
---	---	---	---	---	---	---

Length (cm):

Weight (kg):

Head circumference (cm):

Example of output – here “Length”:



HOW TO

4. TROUBLESHOOT

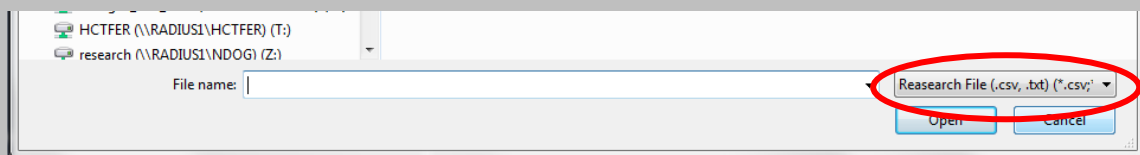
1. I cannot upload drag and drop my file. What should I do?

The application allows only *.csv files to be dragged and dropped directly. Files with a *.txt extension can only be uploaded through the “browse” function. First make sure that your data are in a *.csv or *.txt file.

Note that data in *.txt file should be separated by a comma or semicolon and not tab delimited.

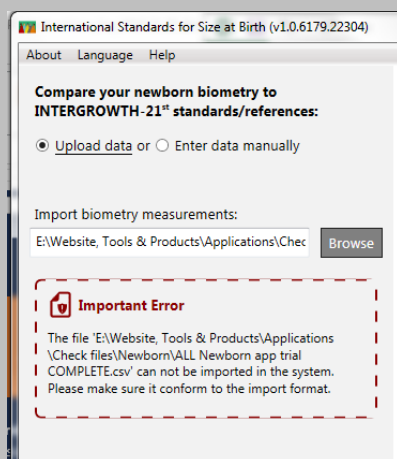
2. I cannot find my file. What should I do?

If when you try to upload a file using the “Browse” function, you cannot find your data file, make sure that it is saved in a supported format, i.e. *.csv or *.txt



3. My file is in the correct format but when I upload it, I see an error message.

If you are certain that your file is in the correct format but when you upload your file, the application still displays the following error message:



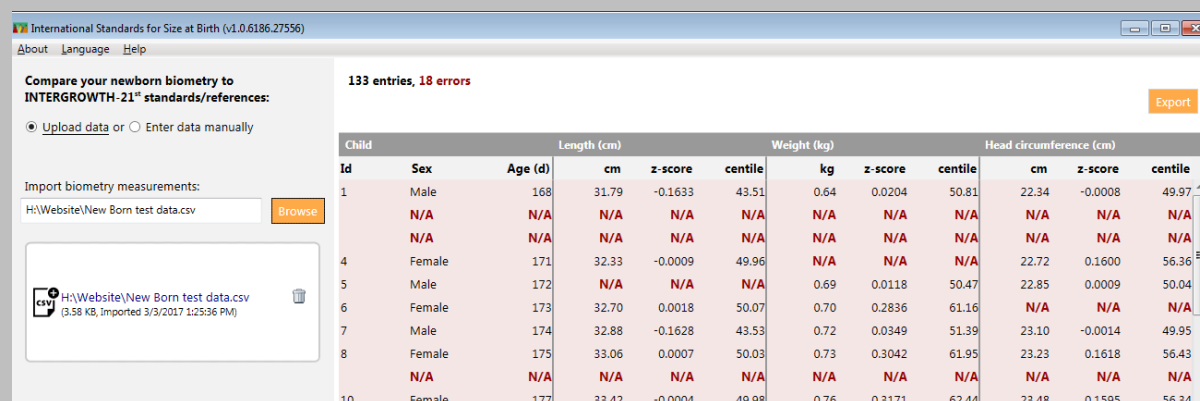
Make sure your file is closed before trying to upload it. If not, close it and try again.

4. When I upload my files, the results are “N/A”?

If N/A appears, it may mean:

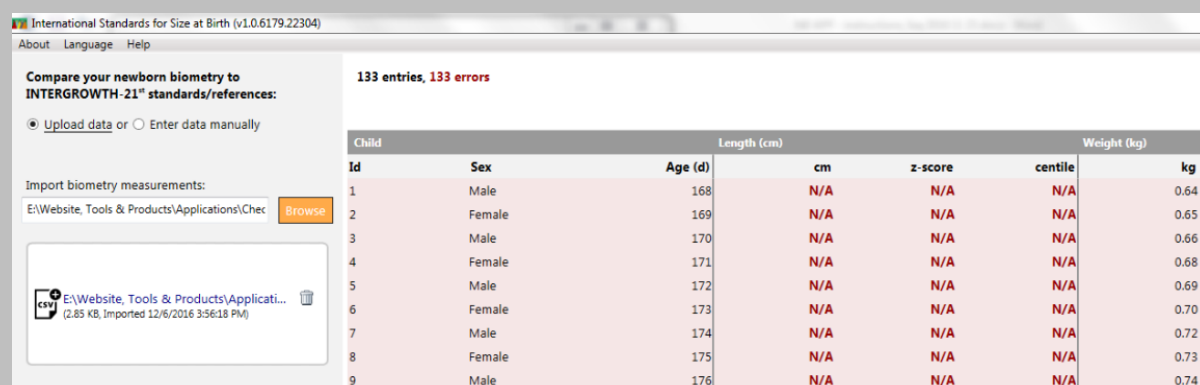
1. A compulsory piece of information, like gender or gestational age, is either missing or has not been entered in the correct format. Please refer to the “Prepare your data” section.
2. The column has not been correctly labelled. Please refer to the “Prepare your data” section.
3. The measurement is missing from your file

Example of screen when compulsory information is missing (e.g. no data in the Sex or GA columns or the columns have been omitted) or the data are present but not in the correct format (e.g. there are decimals in the values for GA or you used “boys” and “girls” instead of “male” and “female” for sex):



Child	Sex	Age (d)	Length (cm)	z-score	centile	Weight (kg)	z-score	centile	Head circumference (cm)	z-score	centile
1	Male	168	31.79	-0.1633	43.51	0.64	0.0204	50.81	22.34	-0.0008	49.97
	N/A	N/A	N/A	N/A	N/A	N/A	N/A	N/A	N/A	N/A	N/A
4	Female	171	32.33	-0.0009	49.96	N/A	N/A	N/A	22.72	0.1600	56.36
5	Male	172	N/A	N/A	N/A	0.69	0.0118	50.47	22.85	0.0009	50.04
6	Female	173	32.70	0.0018	50.07	0.70	0.2836	61.16	N/A	N/A	N/A
7	Male	174	32.88	-0.1628	43.53	0.72	0.0349	51.39	23.10	-0.0014	49.95
8	Female	175	33.06	0.0007	50.03	0.73	0.3042	61.95	23.23	0.1618	56.43
	N/A	N/A	N/A	N/A	N/A	N/A	N/A	N/A	N/A	N/A	N/A
10	Female	177	33.42	-0.0004	49.98	0.76	0.3171	62.44	23.48	0.1595	56.34

Example of screen when either a measurement has been omitted (here, Length) or your column has been incorrectly labelled (e.g. “Lenght” instead of “Length”):



Child	Sex	Age (d)	Length (cm)	z-score	centile	Weight (kg)	z-score	centile
1	Male	168	N/A	N/A	N/A	0.64	N/A	N/A
2	Female	169	N/A	N/A	N/A	0.65	N/A	N/A
3	Male	170	N/A	N/A	N/A	0.66	N/A	N/A
4	Female	171	N/A	N/A	N/A	0.68	N/A	N/A
5	Male	172	N/A	N/A	N/A	0.69	N/A	N/A
6	Female	173	N/A	N/A	N/A	0.70	N/A	N/A
7	Male	174	N/A	N/A	N/A	0.72	N/A	N/A
8	Female	175	N/A	N/A	N/A	0.73	N/A	N/A
9	Male	176	N/A	N/A	N/A	0.74	N/A	N/A

5. I have tried everything and nothing seems to be working, what shall I do?

If you encounter further problems and cannot find a solution in this section, please contact us by email at intergrowth21st@tghn.org.

Please state the nature of your problem(s) in detail (send screen shots if necessary) and include a sample or all of your data.

We will check the data for you and give you feedback as soon as possible.