



Sloths host Anhanga virus-related phleboviruses across large distances in time and space

Edmilson F. de Oliveira Filho¹  | Andrés Moreira-Soto^{1,2} | Carlo Fischer¹ |
 Andrea Rasche¹ | Anna-Lena Sander¹ | Judy Avey-Arroyo³ | Francisco Arroyo-Murillo³ |
 Eugenia Corrales-Aguilar² | Jan Felix Drexler^{1,4,5} 

¹Institute of Virology, Charité-Universitätsmedizin Berlin, corporate member of Freie Universität Berlin, Humboldt-Universität zu Berlin, Berlin Institute of Health, Berlin, Germany

²Faculty of Microbiology, Virology-CIET (Research Center for Tropical Diseases), University of Costa Rica, San José, Costa Rica

³The Sloth Sanctuary of Costa Rica, Limon, Costa Rica

⁴German Centre for Infection Research (DZIF), associated partner site Charité, Berlin, Germany

⁵Martsinovskiy Institute of Medical Parasitology, Tropical and Vector-Borne Diseases, Sechenov University, Moscow, Russia

Correspondence

Jan Felix Drexler, Helmut-Ruska-Haus, Institute of Virology, Campus Charité Mitte, Charitéplatz 1, 10098 Berlin, Germany.
 Email: felix.drexler@charite.de

Funding information

University of Costa Rica; European Union's Horizon 2020 research and innovation programme, Grant/Award Number: 734548 and 653316

Abstract

Sloths are genetically and physiologically divergent mammals. Phleboviruses are major arthropod-borne viruses (arboviruses) causing disease in humans and other animals globally. Sloths host arboviruses, but virus detections are scarce. A phlebovirus termed Anhanga virus (ANHV) was isolated from a Brazilian Linnaeus's two-toed sloth (*Choloepus didactylus*) in 1962. Here, we investigated the presence of phleboviruses in sera sampled in 2014 from 74 Hoffmann's two-toed (*Choloepus hoffmanni*, $n = 65$) and three-toed (*Bradypus variegatus*, $n = 9$) sloths in Costa Rica by broadly reactive RT-PCR. A clinically healthy adult Hoffmann's two-toed sloth was infected with a phlebovirus. Viral load in this animal was high at 8.5×10^7 RNA copies/ml. The full coding sequence of the virus was determined by deep sequencing. Phylogenetic analyses and sequence distance comparisons revealed that the new sloth virus, likely representing a new phlebovirus species, provisionally named Penshurt virus (PEHV), was most closely related to ANHV, with amino acid identities of 93.1%, 84.6%, 94.7% and 89.0% in the translated L, M, N and NSs genes, respectively. Significantly more non-synonymous mutations relative to ANHV occurred in the M gene encoding the viral glycoproteins and in the NSs gene encoding a putative interferon antagonist compared to L and N genes. This was compatible with viral adaptation to different sloth species and with micro-evolutionary processes associated with immune evasion during the genealogy of sloth-associated phleboviruses. However, gene-wide mean dN/dS ratios were low at 0.02–0.15 and no sites showed significant evidence for positive selection, pointing to comparable selection pressures within sloth-associated viruses and genetically related phleboviruses infecting hosts other than sloths. The detection of a new phlebovirus closely-related to ANHV, in sloths from Costa Rica fifty years after and more than 3,000 km away from the isolation of ANHV confirmed the host associations of ANHV-related phleboviruses with the two extant species of two-toed sloths.

KEYWORDS

arbovirus, Costa Rica, evolution, penshurt virus, phlebovirus, sloths

1 | INTRODUCTION

Sloths belong to the Xenarthra superorder, whose members are ancient placental mammals that are extant only in the Americas (de Moraes-Barros, Silva, Miyaki, & Morgante, 2006). Phleboviruses are ubiquitous arthropod-borne viruses (arboviruses), associated with human and animal disease, such as Rift Valley fever virus (RVFV), Punta Toro virus (PTV), Toscana virus (TOSV), Sandfly Naples virus (SFNV) and severe fever with thrombocytopenia syndrome virus (SFTSV) (Ayhan & Charrel, 2017; Gundacker et al., 2017; Hartman, 2017). The phleboviral genome consists of three single-stranded RNA segments of negative or ambisense polarity, termed the large (L), medium (M) and small (S) segments. The L segment encodes the RNA-dependent RNA polymerase (RdRp), and the M segment encodes a polyprotein which is cleaved into a non-structural protein (NS_m) and two envelope glycoproteins termed Gn and Gc. Finally, the S segment encodes the nucleocapsid (N) transcribed in the viral sense and a non-structural protein (NS_s) transcribed in reverse sense (Hornak, Lanchy, & Lodmell, 2016).

Sloths are understudied regarding the viruses they host. Serological studies suggest circulation of different arboviruses belonging to the *Alphavirus*, *Flavivirus*, *Orthobunyavirus* and *Phlebovirus* genera in different species from both extant sloth genera *Bradypus* and *Choloepus* in Central and South America (Gilmore, Da Costa, & Duarte, 2001; Medlin et al., 2016; Seymour, Peralta, & Montgomery, 1983a; de Thoisy, Dussart, & Kazanji, 2004; de Thoisy, Gardon, Salas, Morvan, & Kazanji, 2003). However, cross-reactivity of antibodies between antigenically related arboviruses precludes definite assessments of the arboviruses infecting sloths. Viruses that have been genetically characterized from sloths include, among others, the orthobunyavirus Oropouche virus (OROV), the orbivirus Changuinola virus (CHV) and the two phleboviruses PTV and Anhanga virus (ANVH) (Seymour et al., 1983a; Seymour, Peralta, & Montgomery, 1983b; Travassos da Rosa et al., 1984, 2017). For comparison, genomic sequences of coronaviruses alone mount to several hundreds to thousands in other mammalian orders such as bats, carnivores or ungulates, representing multiple viral species and genera (Drexler, Corman, & Drosten, 2014), thus highlighting the scarcity of viral genomic information available from sloth hosts.

ANHV was isolated from a single Linnaeus's two-toed sloth (*Choloepus didactylus*) from Brazil in 1962, and its complete genomic sequence has only recently become available (Nunes-Neto et al., 2017; Tesh, 1988). After 1962, no subsequent detection in wildlife or humans has been documented, which limits studies on the distribution and diversity of this virus and on the potential role of sloths as hosts of ANHV. Here, we characterize a new ANHV-related phlebovirus species in sloths from Costa Rica.

2 | MATERIALS AND METHODS

A total of 74 sera were sampled from 65 individual Hoffmann's two-toed (*Choloepus hoffmanni*) and 9 three-toed (*Bradypus variegatus*)

sloths by venous puncture done by trained veterinarians on the 'Sloth Sanctuary' in Costa Rica in 2014 (<http://www.slothsanctuary.com>; Figure 1a). Of the 74 sloths, 70 were captive, three had recently arrived and were in quarantine, and one was a wild sloth, which had entered the sanctuary. Permission for sampling was obtained from the National Council in the Management of Biodiversity (resolution R-026-OT-CONAGEBIO) according to international animal health standards.

Viral RNA was extracted using the RNeasy Kit (Qiagen). Samples were screened for phlebovirus RNA using a broadly reactive RT-PCR assay (Lambert & Lanciotti, 2009). Because broadly reactive assays may be limited in sensitivity due to nucleotide mismatches below oligonucleotide primers (Drexler et al., 2007), a strain-specific hemi-nested screening RT-PCR assay was designed subsequent to genomic characterizations to augment sensitivity (Table 1). Viral RNA was quantified using a strain-specific real-time RT-PCR assay (Table 1) controlled by photometrically quantified *in vitro*-transcribed RNA controls generated as described previously (Drexler et al., 2009). Deep sequencing was done using MiSeq Reagent v2 chemistry (Illumina), the KAPA Frag Kit and a KAPA RNA HyperPrep library (Roche). Sequence assembly and MAFFT alignments were done in Geneious 9.1.8 (www.geneious.com).

Maximum likelihood (ML) phylogenies were done on translated genes or genomic domains using MEGA X (Kumar, Stecher, Li, Knyaz, & Tamura, 2018) with a WAG amino acid substitution model, 1000 bootstrap replicates and a complete deletion of all alignment positions containing gaps. Recombination was assessed using the Recombination Detection Package V4 (Martin et al., 2010) and GARD (Kosakovsky Pond, Posada, Gravenor, Woelk, & Frost, 2006). Analyses of selection pressure were done using fixed-effects likelihood (FEL) and single-likelihood ancestor counting (SLAC), both using the GTRxMG94 substitution model as done in Lam et al. (2013), and random-effects likelihood (REL; substitution model HKY85 as done in Feng et al. (2019) within Datamonkey from the HYPHY package (Pond & Frost, 2005) and comparing the M1 versus M2 and M7 versus M8 models implemented in the CodeML program in the PAML package using the codon frequency model F61 (Xu & Yang, 2013). Since formal selection pressure analyses within ANHV-related viruses are limited by the small data set, we selected the 10 genetically most closely related phleboviruses based on amino acid pairwise sequence distances within the complete L gene for these analyses (details on those viruses are provided in the figure legend). Chi-square tests comparing the occurrence of non-synonymous mutations between ANHV-related virus genes and 95% confidence intervals were inferred using Prism version 6.01 (GraphPad Software, www.graphpad.com).

The conditions used during the original ANHV isolation are unclear. The virus can be propagated on Vero cells (Nunes-Neto et al., 2017), yet the initial isolation may have been performed by intracerebral inoculation in suckling mice according to the American Type Culture Collection product entry (ATCC VR-424). Here, virus isolation was attempted from sloth serum diluted at 1:10 and 1:100 and inoculated onto Vero E6 maintained at 37°C and cultivated in DMEM, and C6/36 cells maintained at

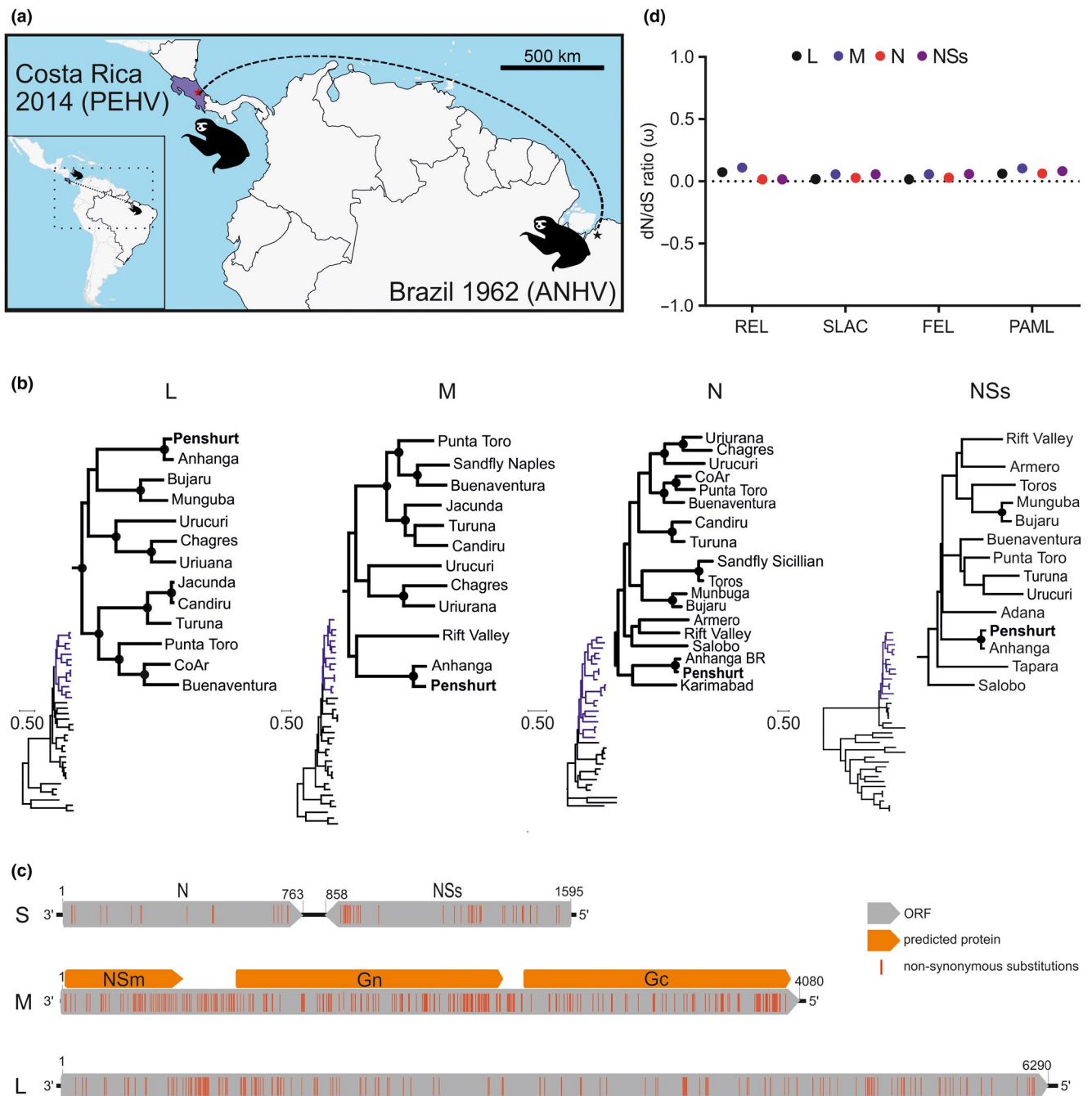


FIGURE 1 Location, genomic and evolutionary characteristics of the novel phlebovirus found in a Costa Rican sloth. Geographic distribution of ANHV-related viruses, that is, ANHV from Brazil and Penshurt virus (PEHV) from Costa Rica. Map built with Quantum GIS—QGIS (<http://qgis.osgeo.org>) (a). Maximum likelihood phylogenetic tree based on translated amino acid sequences of the L, M, N and NSs genes with highlighted trees showing viruses closely related to ANHV and PEHV. Black circles at nodes represent support values of ≥ 0.75 from 1000 bootstrap replicates (b). Genome organization of the new PEHV found in Costa Rican sloths, showing genomic segments and encoded proteins (RdRp on L; NSm, Gn and Gc on M; nucleocapsid (N) and non-structural (NSs) on S segment). Proteins were predicted according to BLASTp analysis comparing the PEHV genome with those from other phleboviruses. Red, non-synonymous substitutions compared to ANHV reference sequences (c). Mean dN/dS (ω) ratios on L, M, N and NSs genes using different methods as indicated below (d). Pressure analyses included the two ANHV-related strains ANHV and PEHV and Bujaru, Candiru, Chagres, CoAr, Munguba, Punta Toro, Rift Valley, Salobo, Turuna and Uriana virus (d). Accession number for all phlebovirus reference sequences (segments L, M and S) used: Adana (KJ939330, NC_029128, NC_029129), Anhangá (NC_033836, NC_033846, NC_033837), Armero (HM566140, HM566141, HQ661807) Bujaru (KX611388, KX611389, KX611390), Buenaventura (KP272001, KP272002, EF201839), Candiru (NC_015374, NC_015373, NC_015375), Chagres (HM566147, HM566146, HM566148), CoAr (HM566152, HM566154, HM566153), Jacunda (HM466934, HM466935, HM466936), Karimabad (KF297912, KF297913, KF297914), Munguba (HM566164, NC_033847, NC_033831), Punta Toro (KP272004, KP272005, KP272006), Rift Valley (DQ375409, DQ380204, DQ380146), Salobo (HM627185, HM627183, HM627184), Sandfly Naples (HM566172, HM566169, HM566170), Sandfly Sicilian (NC_015412, NC_015411, NC_015413), Palma (NC_021242, NC_021243, NC_021244), Toros (KP966619, NC_037614, NC_037615), Turuna (HM119431, HM119432, HM119433), Uriurana (HM566189, HM566188, HM566190), Urucuri (NC_033841, NC_033842, NC_033843)

Use	Gene	Name	Oligonucleotide sequence
RT-PCR	L	L69F	CTTAGCTATGTTGAAACCCTATACA
		L409R	GCCAATAGGGCAGATTTCTCTG
		L394R	TCTCTGCTCCTCTAGTTGTGG
qRT-PCR	L	PEHV-rtF	AAGATTGTGAGAATGTGCACTGAGT
		PEHV-rtR	TTAGTGTCCGCTCCCTTTCCT
		PEHV-rtP	TTGGAACAGTATTCTCACACTTGCCGGCT ^b

TABLE 1 Primers for detection and quantification of PEHV^a

^aThermocycling involved reverse transcription at 55°C for 20 min followed by 94°C for 3 min and then 45 cycles of 94°C for 15 s and 58°C for 30 s. PCR was done using the One-Step SuperScript III RT-PCR kit for first-round and real-time RT-PCR reactions and the Platinum Taq PCR kit (Thermo Fisher) for second round reactions.

^bLabelled with fluorescein amidite (FAM) at the 5' end and a dark quencher at the 3' end.

28°C and cultivated in Leibovitz's L15 medium. After 1-hr incubation, the inoculum was removed and replaced by medium supplemented with 5% foetal calf serum (FCS), 1% penicillin/streptomycin (20 U/ml) and 1% non-essential amino acids. Infected cells were passaged three times every 7 days and controlled daily for cytopathic effect (CPE). In addition, a quantitative real-time RT-PCR assay was used to analyse potential isolation without CPE in supernatant from each passage (Table 1). After three passages, neither CPE nor an increment of RNA levels were observed, potentially due to degradation of the inoculum due to sampling in tropical conditions and repeated freeze-thawing cycles. GenBank accession numbers for the ANHV-related phlebovirus, Penschurt virus (PEHV) described here are MN163121 (L segment), MN163122 (M segment) and MN163123 (S segment).

3 | RESULTS

Both the broadly reactive screening assay and the strain-specific RT-PCR assay yielded only one positive sample out of 74 (1.4%; 95% confidence interval, 0.03–7.3). Viral load in that serum was high at 8.5×10^7 RNA copies/ml. The positive animal was a wild and clinically healthy adult Hoffmann's two-toed sloth, whereas all captive sloths were PCR-negative. Unfortunately, the exact time of entry of the wild animal into the sanctuary was not known, and whether the animal acquired phlebovirus infection in the wild or in the sanctuary remained unclear. The full coding sequence of the viral genome was recovered by deep sequencing. Comparison of the tree topology based on the four deduced proteins showed that the new sloth virus consistently clustered within the clade of mosquito/sandfly-associated phleboviruses together with the ANHV prototype strain isolated in Brazil in 1962 (Nunes-Neto et al., 2017) (Figure 1b). The four amino acid-based ML trees displayed distinct clustering patterns; while in the L segment the two ANHV-related strains were most related to Bujaru and Munguba viruses, the ANHV clade did not cluster in close relationship to other phleboviruses in trees based on the M, N and NSs segments (Figure 1b). No reassortment of the ANHV-related viruses with other phleboviruses and no recombination events within ANHV-related genes were detected.

The genome of the new ANHV-related virus encompassed, as observed in other phleboviruses, two negative-sense segments and an ambisense genomic segment, the coding sequences of which were all identical in length to the ANHV prototype strain. Translated amino acid genome identity between the new virus and the ANHV prototype strain was 93.1% (L), 84.6% (M), 94.7% (N) and 89.0% (NSs) (Table 2). Amino acid sequence distance between the new virus and other phleboviruses was relatively high at 38.8%–68.5% (L), 51.2%–79.3% (M), 41.1%–64.2% (N) and 74.0%–84.0% (NSs) (Table 2), which was compatible with the relatively long branches segregating the ANHV-related clade from other phleboviruses in phylogenetic analyses.

So far, even the ANHV prototype strain is still unclassified by the International Committee on Taxonomy of Viruses (ICTV) and, since it could not be placed together with other viruses, neither based on serology (Nunes-Neto et al., 2017) nor by molecular analyses, it may represent a new phlebovirus species. Considering that the recently proposed species demarcation criterion for phleboviruses is <95% amino acid identity within the translated L gene (Marklewitz, Palacios, Ebihara, Kuhn, & Junglen, 2019) and the 6.9% distance between the new ANHV-related virus from Costa Rica and the Brazilian ANHV prototype strain in the translated L gene, these two viruses may correspond to two separate, yet monophyletic, species. In case the ICTV decides to classify the new virus from this study as a distinct species, we provisionally propose the name PEHV, according to the location of the sloth sanctuary.

Non-synonymous mutations between PEHV and the genetically closely related ANHV prototype strain occurred significantly more frequently in M and NSs compared to L and N genes (chi-square, $p < .0001$ for all comparisons; Table 2). The envelope glycoproteins Gn and Gc encoded by the M segment are associated with cellular attachment and viral entry and are targets for neutralizing antibodies (Venturi et al., 2007), and the NSs is associated with virulence and interferon antagonism in vertebrate cells (Billecocq et al., 2004). Therefore, the relatively higher divergence could be due to selective pressure associated with host adaptation and immune evasion during the genealogy of the two ANHV-related viruses, that is the ANHV prototype strain and PEHV. However, mean dN/dS ratios ranged from 0.02 to 0.15 across all genes in a subset of

TABLE 2 Estimates of evolutionary divergence between PEHV, ANHV and other phleboviruses

Gene	Distance between ANHV-related strains						Distance between PEHV and most closely related phleboviruses								
	PEHV versus ANHV						BUJV	MUNV	CANV	PTV	CHV	RVFV	SFSV	SFNV	PV
	Size	NT	AA	dS	dN	% dN	AA (%)								
L	6,291	20.5	6.9	893	146	2.3	38.8	39.8	42.7	41.0	40.7	40.4	44.2	45.2	68.5
M	4,080	25.5	15.4	455	213	5.2	55.4	56.6	52.4	53.6	51.2	53.4	55.0	54.6	79.3
N	738	19.9	5.3	99	13	1.7	41.1	42.3	46.1	41.6	51.2	44.4	48.9	53.9	64.2
NSs	750	18.3	11.0	86	32	4.3	74.0	77.5	78.0	81.5	78.5	77.5	80.5	84.0	84.0

Note: The number of amino acid or nucleic acid differences per site from between sequences is shown. Viruses Abbreviations: Anhanga (ANHV), Bujaru (BUJV), Munguba (MUNV), Candiru virus (CANV), Punta Toro (PTV), Chagres (CHV), Rift Valley fever (RVFV), Sandfly fever Sicilian (SFSV), Sandfly fever Naples (SFNV), Palma (PV), Penschurt (PEHV) viruses. dS, synonymous substitution, dN, non-synonymous substitution.

phleboviruses genetically related to the ANHV-related clade, irrespective of the method used (Figure 1d). Similarly, no sites showed significant evidence for positive selection. It should be noted that the apparent absence of positively selected sites might be biased by to insufficient number of sequences from individual viral species for robust formal selection pressure analyses. However, near-complete absence of positively selected sites and similarly low mean dN/dS rates have been reported for larger phlebovirus data sets (Lam et al., 2013), suggesting robustness of our analyses. Significantly lower positive selection pressure in many arboviruses compared to other viruses is likely associated with their need to constantly adapt to both vertebrate and invertebrate hosts during their life cycle (Lequime, Fontaine, Ar Gouilh, Moltini-Conclois, & Lambrechts, 2016; Sironi, Forni, Clerici, & Cagliani, 2016).

4 | DISCUSSION

Hypothetically, one of the reasons for the lack of ANHV detection after the 1960s could be that the previous isolation was an accidental spillover infection into sloths from an unknown source. Here, we confirmed the association of ANHV-related viruses with both extant two-toed sloth species in the *Choloepus* genus across 3,000 km distance and half a century between the both detections. Future studies should address the identification of arthropod vectors involved in the life cycle of ANHV-related viruses, as well as seroprevalence studies to ascertain their vertebrate hosts and zoonotic potential. Serological studies should ideally rely on both ANHV and PEHV isolates, since even the genetically closely related ANHV and PEHV may not cross-react in serological assays, given the lack of cross-reactivity between phleboviruses showing comparable genomic distances in their L and M genes (Marklewitz, Dutari, et al., 2019).

Finally, sloths have peculiar characteristics such as low body temperature and low metabolic rates (Cliffe et al., 2018; Pauli et al., 2014; Pauli, Peery, Fountain, & Karasov, 2016), likely associated with a low-calorie diet that is high in toxicity and requires atypically long digestion periods (Cliffe et al., 2018). Even if the infected animal was apparently healthy, viral infection can affect the host metabolism on the cellular level and potentially also on the

level of the whole organism (Byers, Fleshman, Perera, & Molins, 2019; Gonzalez Plaza, Hulak, Kausova, Zhumadilov, & Akilzhanova, 2016). Whether acute viral infections in general and phlebovirus infections in particular may thus be harmful to sloths due to their metabolic constraints remains an intriguing question.

ACKNOWLEDGEMENTS

The authors thank the animal keepers and resident sloths from the Sloth Sanctuary in Costa Rica. AMS was founded by the German Academic Exchange Service (DAAD) and The Office of International Affairs and External Cooperation (OAICE) from the University of Costa Rica. This work was supported by the European Union's Horizon 2020 research and innovation programme through the ZIKAlliance project (grant agreement no. 734548) and the EVAg project (grant agreement no. 653316).

CONFLICT OF INTEREST

The authors declare no conflict of interest.

ETHICAL APPROVAL

The authors confirm that the ethical policies of the journal, as noted on the journal's author guidelines page, have been adhered, and the appropriate ethical review committee approval has been received. The protocol and procedure for sampling the sloths were approved by the Costa Rican National Council in the Management of Biodiversity that regulates wild animal welfare (resolution R-026-OT-CONAGEBIO). All sloth samples were taken by trained veterinarians in the sanctuary, collected as part of routine examinations according to national guidelines for animal care described in the Costa Rica National Law for Animal Welfare 7451.

ORCID

Edmilson F. Oliveira Filho  <https://orcid.org/0000-0002-3771-1565>

Jan Felix Drexler  <https://orcid.org/0000-0002-3509-0232>

REFERENCES

- Ayhan, N., & Charrel, R. N. (2017). Of phlebotomines (sandflies) and viruses: A comprehensive perspective on a complex situation. *Current Opinion in Insect Science*, 22, 117–124. <https://doi.org/10.1016/j.cois.2017.05.019>
- Billecocq, A., Spiegel, M., Vialat, P., Kohl, A., Weber, F., Bouloy, M., & Haller, O. (2004). NSs protein of Rift Valley fever virus blocks interferon production by inhibiting host gene transcription. *Journal of Virology*, 78(18), 9798–9806. <https://doi.org/10.1128/JVI.78.18.9798-9806.2004>
- Byers, N. M., Fleshman, A. C., Perera, R., & Molins, C. R. (2019). Metabolomic insights into human arboviral infections: Dengue, chikungunya, and zika viruses. *Viruses*, 11(3), 225. <https://doi.org/10.3390/v11030225>
- Cliffe, R. N., Scantlebury, D. M., Kennedy, S. J., Avey-Arroyo, J., Mindich, D., & Wilson, R. P. (2018). The metabolic response of the *Bradypus* sloth to temperature. *PeerJ*, 6, e5600. <https://doi.org/10.7717/peerj.5600>
- de Moraes-Barros, N., Silva, J. A., Miyaki, C. Y., & Morgante, J. S. (2006). Comparative phylogeography of the Atlantic forest endemic sloth (*Bradypus torquatus*) and the widespread three-toed sloth (*Bradypus variegatus*) (Bradyrodidae, Xenarthra). *Genetica*, 126(1–2), 189–198. <https://doi.org/10.1007/s10709-005-1448-x>
- de Thoisy, B., Dussart, P., & Kazanji, M. (2004). Wild terrestrial rainforest mammals as potential reservoirs for flaviviruses (yellow fever, dengue 2 and St Louis encephalitis viruses) in French Guiana. *Transactions of the Royal Society of Tropical Medicine and Hygiene*, 98(7), 409–412. <https://doi.org/10.1016/j.trstmh.2003.12.003>
- de Thoisy, B., Gardon, J., Salas, R. A., Morvan, J., & Kazanji, M. (2003). Mayaro virus in wild mammals, French Guiana. *Emerging Infectious Diseases*, 9(10), 1326–1329. <https://doi.org/10.3201/eid0910.030161>
- Drexler, J. F., Corman, V. M., & Drosten, C. (2014). Ecology, evolution and classification of bat coronaviruses in the aftermath of SARS. *Antiviral Research*, 101, 45–56. <https://doi.org/10.1016/j.antiviral.2013.10.013>
- Drexler, J. F., de Souza Luna, L. K., Pedroso, C., Pedral-Sampaio, D. B., Queiroz, A. T. L., Brites, C., ... Drosten, C. (2007). Rates of and reasons for failure of commercial human immunodeficiency virus type 1 viral load assays in Brazil. *Journal of Clinical Microbiology*, 45(6), 2061–2063. <https://doi.org/10.1128/JCM.00136-07>
- Drexler, J. F., Kupfer, B., Petersen, N., Grotto, R. M. T., Rodrigues, S. M. C., Grywna, K., ... Drosten, C. (2009). A novel diagnostic target in the hepatitis C virus genome. *PLoS Medicine*, 6(2), e31. <https://doi.org/10.1371/journal.pmed.1000031>
- Feng, H., Sander, A. L., Moreira-Soto, A., Yamane, D., Drexler, J. F., & Lemon, S. M. (2019). Hepatovirus 3ABC proteases and evolution of mitochondrial antiviral signaling protein (MAVS). *Journal of Hepatology*, 71(1), 25–34. <https://doi.org/10.1016/j.jhep.2019.02.020>
- Gilmore, D. P., Da Costa, C. P., & Duarte, D. P. (2001). Sloth biology: An update on their physiological ecology, behavior and role as vectors of arthropods and arboviruses. *Brazilian Journal of Medical and Biological Research*, 34(1), 9–25. <https://doi.org/10.1590/S0100-879X20010010100002>
- Gonzalez Plaza, J. J., Hulak, N., Kausova, G., Zhumadilov, Z., & Akilzhanova, A. (2016). Role of metabolism during viral infections, and cross-talk with the innate immune system. *Intractable and Rare Diseases Research*, 5(2), 90–96. <https://doi.org/10.5582/irdr.2016.01008>
- Gundacker, N. D., Carrera, J.-P., Castillo, M., Díaz, Y., Valenzuela, J., Tamhane, A., ... López-Vergès, S. (2017). Clinical manifestations of Punta Toro virus species complex infections, Panama, 2009. *Emerging Infectious Diseases*, 23(5), 872–874. <https://doi.org/10.3201/eid2305.161925>
- Hartman, A. (2017). Rift Valley fever. *Clinics in Laboratory Medicine*, 37(2), 285–301. <https://doi.org/10.1016/j.cll.2017.01.004>
- Hornak, K. E., Lanchy, J. M., & Lodmell, J. S. (2016). RNA encapsidation and packaging in the phleboviruses. *Viruses*, 8(7), 194. <https://doi.org/10.3390/v8070194>
- Kosakovsky Pond, S. L., Posada, D., Gravenor, M. B., Woelk, C. H., & Frost, S. D. (2006). Automated phylogenetic detection of recombination using a genetic algorithm. *Molecular Biology and Evolution*, 23(10), 1891–1901. <https://doi.org/10.1093/molbev/msl051>
- Kumar, S., Stecher, G., Li, M., Knyaz, C., & Tamura, K. (2018). MEGA X: Molecular evolutionary genetics analysis across computing platforms. *Molecular Biology and Evolution*, 35(6), 1547–1549. <https://doi.org/10.1093/molbev/msy096>
- Lam, T.-Y., Liu, W., Bowden, T. A., Cui, N., Zhuang, L. U., Liu, K., ... Pybus, O. G. (2013). Evolutionary and molecular analysis of the emergent severe fever with thrombocytopenia syndrome virus. *Epidemics*, 5(1), 1–10. <https://doi.org/10.1016/j.epidem.2012.09.002>
- Lambert, A. J., & Lanciotti, R. S. (2009). Consensus amplification and novel multiplex sequencing method for S segment species identification of 47 viruses of the Orthobunyavirus, Phlebovirus, and Nairovirus genera of the family Bunyaviridae. *Journal of Clinical Microbiology*, 47(8), 2398–2404. <https://doi.org/10.1128/JCM.00182-09>
- Lequime, S., Fontaine, A., Ar Gouilh, M., Moltini-Conclois, I., & Lambrechts, L. (2016). Genetic drift, purifying selection and vector genotype shape dengue virus intra-host genetic diversity in mosquitoes. *PLoS Genetics*, 12(6), e1006111. <https://doi.org/10.1371/journal.pgen.1006111>
- Marklewitz, M., Dutari, L. C., Paraskevopoulou, S., Page, R. A., Loaiza, J. R., & Junglen, S. (2019). Diverse novel phleboviruses in sandflies from the Panama Canal area, Central Panama. *Journal of General Virology*, 100(6), 938–949. <https://doi.org/10.1099/jgv.0.001260>
- Marklewitz, M., Palacios, G., Ebihara, H., Kuhn, J., & Junglen, S. (2019). Create six new genera, create eighty-five new species, rename/move ten species and abolish two species in the family Phenuiviridae, order Bunyavirales. Retrieved from <https://talk.ictvonline.org/files/proposals>
- Martin, D. P., Lemey, P., Lott, M., Moulton, V., Posada, D., & Lefevre, P. (2010). RDP3: A flexible and fast computer program for analyzing recombination. *Bioinformatics*, 26(19), 2462–2463. <https://doi.org/10.1093/bioinformatics/btq467>
- Medlin, S., Deardorff, E. R., Hanley, C. S., Vergneau-Grosset, C., Siudak-Campfield, A., Dallwig, R., ... Paul-Murphy, J. (2016). Serosurvey of selected arboviral pathogens in free-ranging, two-toed sloths (*Choloepus hoffmanni*) and three-toed sloths (*Bradypus variegatus*) in Costa Rica, 2005–07. *Journal of Wildlife Diseases*, 52(4), 883–892. <https://doi.org/10.7589/2015-02-040>
- Nunes-Neto, J. P., Souza, W. M. D., Acrani, G. O., Romeiro, M. F., Fumagalli, M. J., Vieira, L. C., ... Vasconcelos, P. F. D. C. (2017). Characterization of the Bujaru, frijoles and Tapara antigenic complexes into the sandfly fever group and two unclassified phleboviruses from Brazil. *Journal of General Virology*, 98(4), 585–594. <https://doi.org/10.1099/jgv.0.000724>
- Pauli, J. N., Mendoza, J. E., Steffan, S. A., Carey, C. C., Weimer, P. J., & Peery, M. Z. (2014). A syndrome of mutualism reinforces the lifestyle of a sloth. *Proceedings of the Royal Society B: Biological Sciences*, 281(1778), 20133006. <https://doi.org/10.1098/rspb.2013.3006>
- Pauli, J. N., Peery, M. Z., Fountain, E. D., & Karasov, W. H. (2016). Arboreal folivores limit their energetic output, all the way to slothfulness. *American Naturalist*, 188(2), 196–204. <https://doi.org/10.1086/687032>
- Pond, S. L., & Frost, S. D. (2005). Datamonkey: Rapid detection of selective pressure on individual sites of codon alignments. *Bioinformatics*, 21(10), 2531–2533. <https://doi.org/10.1093/bioinformatics/bti320>
- Seymour, C., Peralta, P. H., & Montgomery, G. G. (1983a). Serologic evidence of natural togavirus infections in Panamanian sloths and other

- vertebrates. *American Journal of Tropical Medicine and Hygiene*, 32(4), 854–861. <https://doi.org/10.4269/ajtmh.1983.32.854>
- Seymour, C., Peralta, P. H., & Montgomery, G. G. (1983b). Viruses isolated from Panamanian sloths. *American Journal of Tropical Medicine and Hygiene*, 32(6), 1435–1444. <https://doi.org/10.4269/ajtmh.1983.32.1435>
- Sironi, M., Forni, D., Clerici, M., & Cagliani, R. (2016). Nonstructural proteins are preferential positive selection targets in zika virus and related flaviviruses. *PLoS Neglected Tropical Diseases*, 10(9), e0004978. <https://doi.org/10.1371/journal.pntd.0004978>
- Tesh, R. B. (1988). The genus Phlebovirus and its vectors. *Annual Review of Entomology*, 33, 169–181. <https://doi.org/10.1146/annurev.en.33.010188.001125>
- Travassos da Rosa, A. P., Tesh, R. B., Pinheiro, F. P., Travassos da Rosa, J. F., Peralta, P. H., & Knudson, D. L. (1984). Characterization of the Changuinola serogroup viruses (Reoviridae: Orbivirus). *Intervirology*, 21(1), 38–49. <https://doi.org/10.1159/000149501>
- Travassos da Rosa, J. F., de Souza, W. M., Pinheiro, F. P., Figueiredo, M. L., Cardoso, J. F., Acrani, G. O., & Nunes, M. R. T. (2017). Oropouche virus: Clinical, epidemiological, and molecular aspects of a neglected orthobunyavirus. *American Journal of Tropical Medicine and Hygiene*, 96(5), 1019–1030. <https://doi.org/10.4269/ajtmh.16-0672>
- Venturi, G., Ciccozzi, M., Montieri, S., Bartoloni, A., Francisci, D., Nicoletti, L., ... Ciufolini, M. G. (2007). Genetic variability of the M genome segment of clinical and environmental Toscana virus strains. *Journal of General Virology*, 88(Pt 4), 1288–1294. <https://doi.org/10.1099/vir.0.82330-0>
- Xu, B., & Yang, Z. (2013). PAMLX: A graphical user interface for PAML. *Molecular Biology and Evolution*, 30(12), 2723–2724. <https://doi.org/10.1093/molbev/mst179>

How to cite this article: de Oliveira Filho EF, Moreira-Soto A, Fischer C, et al. Sloths host Anhangá virus-related phleboviruses across large distances in time and space. *Transbound Emerg Dis*. 2019;00:1–7. <https://doi.org/10.1111/tbed.13333>