

ETHICAL ISSUES ARISING IN RESEARCH WITH PEOPLE WITH MENTAL HEALTH CONDITIONS

CALL FOR APPLICATIONS NOW OPEN!

DEADLINE: 04 NOVEMBER 2020



The WHO estimates that **untreated mental health disorders** account for **13%** of the total global burden of disease. By 2030, **depression alone** will be the **leading cause of disability** globally.



of people likely to experience mental health problems are from **low- and middle- income countries (LMICs)**; yet, the treatment gap is about **75%**, almost twice that of high income countries (HICs).



The GFBR is a global platform for the exchange and sharing of experience and expertise on research ethics. The GFBR **welcomes applications for participants** to attend the **2021 meeting in Toronto, Canada**.



The GFBR is seeking **case studies highlighting ethical challenges, the ethics of mental health research, and proposals on governance issues** in conducting research on mental health conditions in **LMIC settings**.



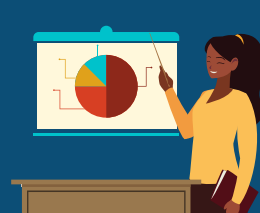
Ethical challenges still compromise mental health research. At the same time, there is limited published mental health research that is applicable to individual LMIC contexts.



Inclusion is a central ethical and human rights consideration, especially for adults lacking decision-making capacity. Engaging experts by experience empowers individuals and enriches research processes.



Ethics review and oversight for research involving individuals with mental health problems should be ensured and enforced throughout research design and implementation.



Research is critical to advancing mental health as a global priority. Strengthening capacity in mental health research is paramount; early career researchers should not be left behind.

CASE STUDIES ARE INVITED ON THE FOLLOWING THEMES

Do current approaches to mental health research resonate with how mental health problems are conceptualised by varying stakeholders in LMICs?

What methods can be used to engage people with lived experience of mental health conditions in research operation and implementation?

How can impactful and ethical mental health research be maximised to generate meaningful evidence?

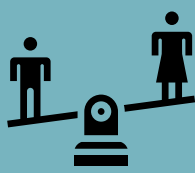
How can over exclusion be addressed and the ethical inclusion of people with mental health problems be promoted?

How can researchers provide for people where capacity is lacking or absent and what is the moral duty of researchers in this process?

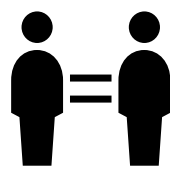
What is the ethical duty of researchers to assess and address mental health stigma as part of their research?

This list is not exhaustive! GFBR organisers will decide the exact meeting themes based on the case studies received.

WHAT ARE THE ETHICAL VALUES & PRINCIPLES GUIDING INCLUSION?



FAIRNESS



EQUALITY



RESPECT



JUSTICE



ACCOUNTABILITY



HUMAN RIGHTS

GOVERNANCE PROPOSALS ARE INVITED ON THE FOLLOWING THEMES

To what extent are ethics governance structures, processes and practices supporting the inclusion of people with mental health conditions in research?

What are the different regulatory models that countries use to include people who lack capacity to consent, and do these models promote inclusion?

Does a country's governance structure and regulation support or challenge the ability to conduct research with people who have mental health conditions?

How can training and capacity strengthening be maximised for building and maintaining robust governance structures?

This list is not exhaustive! GFBR organisers will decide the exact meeting themes based on the governance proposals received.

WHAT ARE THE NEXT STEPS?

- Visit www.gfbr.global for details of how to apply and to access the Background Paper.
- All applications should be sent to gfbr@wellcome.org by 17.00 GMT **4th November 2020**, in English.
- The Planning Committee will inform all applicants on the outcome of their applications by **20 January 2021**.
- Please contact gfbr@wellcome.org for additional queries.

WHAT SHOULD YOU EXPECT?

- Up to 80 people from a broad range of countries and disciplines will be selected to attend.
- Successful case study and governance proposal applicants will be supported to develop their submissions into a format suitable for presentation.
- Cost of travel, accommodation and single-entry visa will be covered for successful applicants from LMICs.**